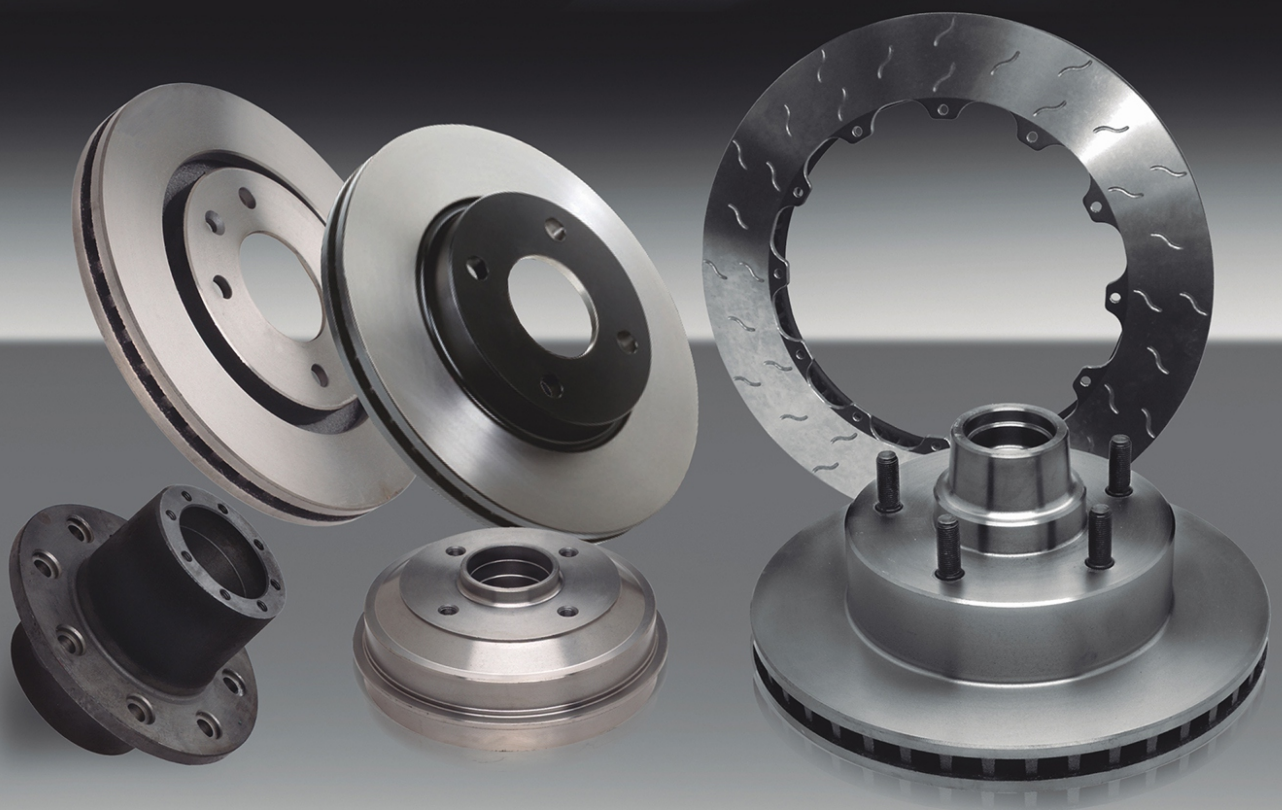


Raybestos[®]

The *best* in brakes[®]



Catálogo de Aplicaciones
Discos, Mazas y Campanas para Freno

Indice



Campanas para Freno / Brake Drums

Instructivo de Sustitución de las Campanas para Freno

5

Tabla de Aplicaciones

7



Discos para Freno / Brake Drums

Instructivo de Sustitución de los Discos para Freno

17

Tabla de Aplicaciones

19



Mazas de Rueda / Wheel Hubs

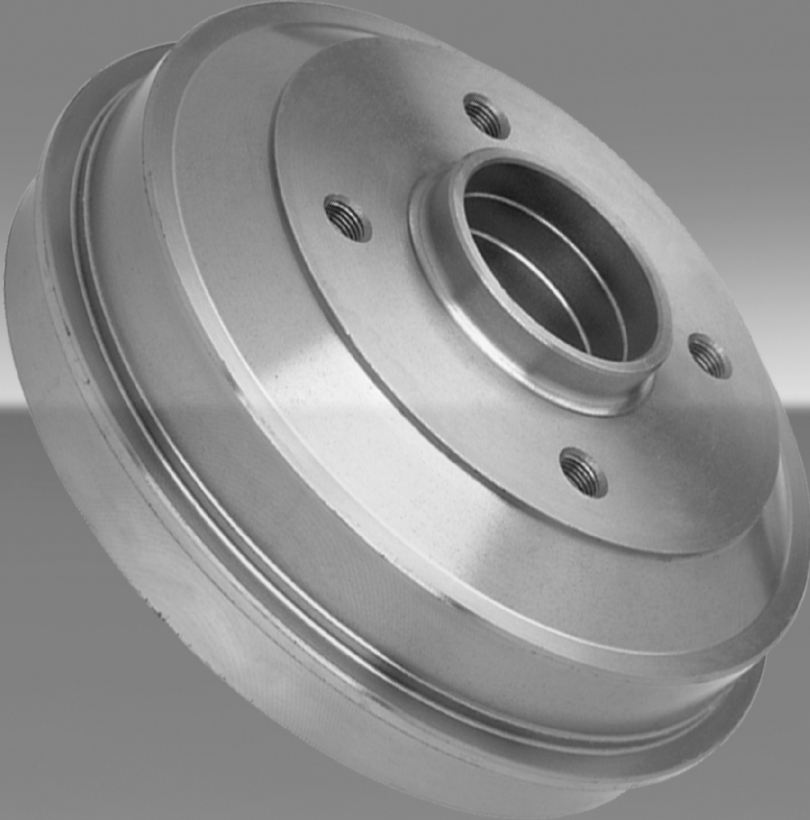
Tabla de Aplicaciones

45

Equivalencias

49

CAMPANAS PARA FRENOS BRAKE DRUMS



Campanas para Freno

Introducción

El principio de frenado en las campanas para freno se da por la expansión de las cintas de freno sobre la superficie de frenado, que son accionadas hidráulicamente por el cilindro de rueda, o mecánicamente por el freno de mano.

Cuando Sustituir

La campana o tambor de freno es un componente crítico de seguridad del sistema de frenos. Debe ser sustituido cuando presenta un aspecto rayado, con surcos profundos, superficies cuarteadas o fisuradas y/o cuando su "Diámetro de Banda de Frenado" ha llegado al máximo indicado. Este diámetro está señalado en la pieza y/o en el catálogo del producto ej.: DIA-MAX 256,8 mm



Instrucciones para la Sustitución

- 1) Desmontar la rueda.
- 2) Dependiendo del tipo de instalación:
 - 2.1) Desmontar la campana de freno (campana con apoyo interno)
 - 2.2) Desmontar la maza o cubo de rueda y a continuación la campana (con apoyo externo)
 - 2.3) Desmontar la maza-campana (diseño integral)
- 3) Limpiar muy bien la cara y diámetro de montaje donde apoyará la campana. Las superficies de contacto deben estar totalmente limpias, libres de óxido, planas, exentas de rebabas y/o protuberancias (por ej.: Golpes).
- 4) Montar la campana nueva, ajustando los bulones en cruz y al torque especificado por el fabricante del vehículo. Siguiendo el proceso inverso al de desmontaje y de acuerdo al tipo de fijación.
- 5) Montar las mazas (según corresponda) y ajustar los cojinetes de rueda acorde a la especificación del fabricante del vehículo.
- 6) Ajustar los frenos, según procedimiento normal, para asegurar la máxima proximidad de las zapatas de freno a la banda de frenado, sin que exista rozamiento, mientras se mantiene el pedal presionado.
- 7) Montar la rueda en la misma posición original apretando en cruz al torque especificado por el fabricante del vehículo.

Instructivo de Sustitución de las Campanas para Freno

Protección Antioxidante

En campanas con protección antioxidante de tipo aceitosa, esta debe ser removida previamente asegurando el montaje de una campana limpia y seca. Excentricidad. En la campana que se monta en una maza, debe controlarse la excentricidad o desplazamiento radial de la banda de frenado respecto del eje de la maza. El valor no debe exceder los 0,30 mm de la lectura total del comparador. La campana debe estar correctamente fijada a la maza previo al control. Si excede el valor indicado, desmontar y girar la campana 90° o 180°, hasta lograr entrar en valor.

d) Es conveniente controlar periódicamente el diámetro y estado de la banda de frenado (por ejemplo cada vez que se revisen y/o cambien las cintas o bloques de freno).

e) Recuerde que las campanas y cintas o bloques de freno son componentes críticos de seguridad. La inspección regular es esencial para su seguridad.

f) Se recomienda balancear el conjunto rodante luego de cambiar la campana de freno.

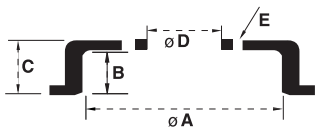
Importante

a) Las campanas de un mismo eje deben ser sustituidas conjuntamente para evitar un funcionamiento irregular durante la frenada.

b) Se recomienda cambiar también las cintas o bloques de freno cuando se sustituyen las campanas. El rayado y los surcos sobre el material de fricción de las zapatas de freno usadas provoca el rayado de la banda de frenado con formación de zonas con un fuerte recalentamiento y reducción de la acción de frenado.

c) Para obtener un funcionamiento correcto de las nuevas campanas es necesario realizar un corto rodaje de asentamiento, evitando frenadas energéticas durante los primeros 300 km.

Las Campanas Raybestoss están fabricadas con las más estrictas normas de Calidad, Seguridad y Cuidado de medio Ambiente, lo que le ha permitido por más de 30 años abastecer con su amplia gama de productos al mercado de reposición como así también ser proveedora de E.O. y exportar a los países más desarrollados del mundo.



CAMPANAS PARA FRENOS BRAKE DRUMS

Raybestos®
The best in brakes



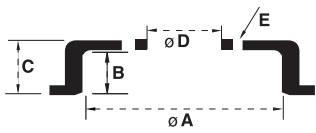
D-Del./Front
T-Tras./Rear
CM - con Maza
SM - sin Maza

Dimensiones/Dimensions
(mm)

Cant. de
Agujeros
Hole Qty

Referencia
Equipo
Original
OEM Part#

					ø A	ø A max	B	C	ø D	E	
AUDI											
80 - Coupe	201518	88 »	T	CM	180.0	181.0	39.0	74.0	39,8 / 50,2	4	305.501.615.1
80 / Coupe	203564	88 »	T	CM	200.0	201.0	48.5	81.0	39,8 / 50,2	4	1H0.501.615.A
CHRYSLER											
D-100 / D-200	201178	63 » 74	D	SM	279.4	280.0	61.2	77.0	83.0	5	3658311
D-100 / D-200	200245	74 » 80	D	SM	279.4	280.0	61.2	77.0	89.5	5	2618275
D-200	200247	67 » 80	T	SM	279.4	280.0	62.0	77.0	72.0	5	2618274
D-400 / 500	200128	63 »	D	SM	355.5	357.0	74.7	121.0	100.0	6	2.418.560-N
D-400 / 500	200163	63 »	T	SM	381.0	384.0	127.5	208.0	154.0	6	2.418.561-N
DODGE 1500	200807	71 »	T	SM	228.6	230.1	50.8	68.5	66.5	4	3.519.064
DP-400 / 500	200163	63 »	T	SM	381.0	384.0	127.5	208.0	154.0	6	2.418.561-N
DP-400 / 500	200128	63 »	D	SM	355.5	357.0	74.7	121.0	100.0	6	2.418.560-N
VALIANT	200141	65 »	D	SM	254.0	256.0	64.3	82.0	62.0	5	2.409.906-N
VALIANT	200149	65 »	T	SM	254.0	256.0	53.0	83.0	62.0	5	2.409.910-N
CITROËN											
BERLINGO	202566	92 »	T	SM	228.6	230.0	46.5	66.5	71.0	4	9150.990.880
C3	205945	Todos	T	CM	203.0	204.0	43.0	71.5	52.0 / 56.0	4	424745 - 424747
SAXO 1.1 / 1.4 Nafta / 1.5 Diesel	204838	01 » 04	T	CM	180.0	181.0	45.3	79.5	52.0	4	424744
XSARA PICASSO	202566	00 »	T	SM	228.6	230.0	46.5	66.5	71.0	4	9150.990.880
DAEWOO											
ESPERO	202201	Todos	T	SM	200.0	201.0	52.5	64.0	57.0	4	359552
RACER	202201	Todos	T	SM	200.0	201.0	52.5	64.0	57.0	4	359552
EL DETALLE											
OA 101 Freno Eaton	204410	Todos	D	SM	380.0	383.0	206.0	250.0	298.0	10	
OA 101 Freno Master	204411	Todos	T	SM	419.0	422.5	187.0	161.0	298.0	10	
OA 102 Freno Master	204411	Todos	T	SM	419.0	422.5	187.0	161.0	298.0	10	
FIAT											
128	201193	Todos	D/T	SM	185.4	186.8	35.6	53.0	58.0	4	970.50634
147	201774	Todos	T	SM	185.4	186.8	35.6	53.0	59.0	4	
500 1.4 16V	204039	08 »	T	SM	228.0	230.0	47.5	61.0	59.0	4	7.569.600
600	201193	Todos	D/T	SM	185.4	186.8	35.6	53.0	58.0	4	970.50634
DUCATO	205946	94 »	T	SM	254.0	256.0	65.5	98.5	72.0	5	1313675080 / 4449694
DUCATO MAXI 1.8T	205947	94 »	T	SM	254.0	256.0	65.5	98.5	79.0	5	1306211080 / 424738
DUNA	202533	86 »	T	SM	185.4	186.8	35.6	53.0	59.0	4	4.379.680
FIORINO	202533	» 93	T	SM	185.4	186.8	35.6	53.0	59.0	4	4.379.680
FIORINO	204039	94 »	T	SM	228.0	230.0	47.5	61.0	59.0	4	7.569.600
GRAN SIENA 1.4 8V / 1.6 16V (Sin ABS)	205998	2012 »	T	SM	185.0	186.8	36.0	49.0	59.0	4	51848881
GRAN SIENA 1.4 8V / 1.6 16V (Con ABS)	205997	2012 »	T	SM	203.0	205.2	44.7	61.0	59.0	4	7774593
IDEA 1.8	204039	05 »	T	SM	228.0	230.0	47.5	61.0	59.0	4	7.569.600
MAREA 1.6 16V / 1.8 16V	204039	98 »	T	SM	228.0	230.0	47.5	61.0	59.0	4	7.569.600
PALIO	202533	97 »	T	SM	185.4	186.8	35.6	53.0	59.0	4	4.379.680
PALIO 1.4 8V / 1.6 16V (Sin ABS)	205998	2011 »	T	SM	185.0	186.8	36.0	49.0	59.0	4	51848881
PALIO 1.4 8V / 1.6 16V (Con ABS)	205997	2011 »	T	SM	203.0	205.2	44.7	61.0	59.0	4	7774593
PALIO ADVENTURE	204039	02 »	T	SM	228.0	230.0	47.5	61.0	59.0	4	7.569.600
PALIO ADVENTURE LOCKER	204039	08 »	T	SM	228.0	230.0	47.5	61.0	59.0	4	7.569.600
PUNTO (TODOS)	204039	07 »	T	SM	228.0	230.0	47.5	61.0	59.0	4	7.569.600
PUNTO 1.4 8V / 1.4 16V	205997	2008 »	T	SM	203.0	205.2	44.7	61.0	59.0	4	7774593



CAMPANAS PARA FRENOS BRAKE DRUMS

Raybestos
The best in brakes



D-Del./Front
T-Tras./Rear
CM - con Maza
SM - sin Maza

Dimensiones/Dimensions
(mm)

Cant. de
Agujeros
Hole Qty

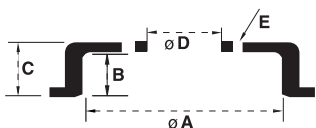
Referencia
Equipo
Original
OEM Part#

FIAT (Continuación)

					ø A	ø A max	B	C	ø D	E	
QUBO 1.4 8V	205997	2011 »	T SM		203.0	205.2	44.7	61.0	59.0	4	7774593
REGATTA	202533	86 »	T SM		185.4	186.8	35.6	53.0	59.0	4	4.379.680
SIENA	202533	97 »	T SM		185.4	186.8	35.6	53.0	59.0	4	4.379.680
TEMPRA	204038	89 »	T SM		180.0	181.6	40.0	54.0	59.0	4	7.599.325
TEMPRA	204039	89 » 98	T SM		228.0	230.0	47.5	61.0	59.0	4	7.569.600
TIPO	204038	89 »	T SM		180.0	181.6	40.0	54.0	59.0	4	7.599.325
UNO	202533	86 »	T SM		185.4	186.8	35.6	53.0	59.0	4	4.379.680
UNO (Sin ABS)	205998	2010 »	T SM		185.0	186.8	36.0	49.0	59.0	4	51848881
UNO (Con ABS)	205997	2010 »	T SM		203.0	205.2	44.7	61.0	59.0	4	7774593

FORD

COURIER	204040	89 »	T CM		180.0	181.0	38.0	75.3	50,2 / 50,2	4	96FB-1113-AB
COURIER	204940	91 » 95	T SM		203.0	204.5	45.0	63.5	63.5	4	
COURIER Pick-up	204041	97 »	T SM		228.6	230.2	51.5	66.5	63.5	4	D27Z-1126A
ECOSPORT 4x2	205800	03 »	T CM		203.0	204.3	46.5	81.0	53.0	4	98AB-1126-BF
ECOSPORT 4x4	204041	03 »	T SM		228.6	230.2	51.5	66.5	63.5	4	D27Z-1126A
ESCORT	202555	Todos	T CM		180.0	182.0	44.5	76.5	39.9 / 50.2	4	81 AB-113-AF
ESCORT	203070	97 »	T CM		203.0	204.5	45.0	80.0	50.2 / 50.2	4	3.519.064
F-100	200210	66 » 84	D SM		279.4	281.7	63.0	80.0	80.0	5	BA-C6TZ-1125
F-100	200211	66 »	T SM		279.4	281.7	59.5	74.5	73.0	5	BA-C6TZ-1126
F-100	200874	59 » 65	T SM		279.4	280.0	53.3	72.0	73.0	5	C4TZ-1126-A
F-100	204939	00»	T SM		305.0	306.5	90.0	137.0	126.0	8	
F-250	201078	73 »	T SM		304.8	306.5	89.4	180.0	152.7	6	BA-D3TZ-1126-A
F-250	201090	73 »	D SM		304.8	306.5	88.4	102.0	146.4	6	BA-D3TZ-1125-A
F-250	201398	73 »	T SM		304.8	306.5	87.6	118.0	152.0	6	80TR-1126-A
F-350	200243	68 »	D SM		304.8	306.5	89.4	102.0	127.0	8	BA-C7TZ-1125-A
F-350	201078	68 » 74	T SM		304.8	306.5	89.4	180.0	152.7	6	BA-C7TZ-1126-A
F-350	201078	73 »	T SM		304.8	306.5	89.4	180.0	152.7	6	BA-D3TZ-1126-A
F-400	200243	68 »	D SM		304.8	306.5	89.4	102.0	127.0	8	BA-C7TZ-1125-A
F-400	201824	84 »	T SM		304.8	306.5	89.4	180.0	152.7	8	85TR-1Y126-A
F-600	200128	57 »	D SM		355.6	357.0	74.7	121.0	100.0	6	B7T-1125-B
F-600	200163	59 » 74	T SM		381.0	384.0	127.5	208.0	154.0	6	B7Q-1126-B
F-600	201120	74 »	T SM		381.0	384.0	127.5	197.0	164.0	6	BA-D4TZ-1126-A
F-700 (Aire)	200538	73 »	T SM		394.0	396.0	160.0	195.0	235.0	8	
F-700 (Art. Aire)	201013	73 »	D SM		394.0	396.0	120.0	145.0	255.0	5	BA-D2TZ-1125-A
F-700 (Art. Aire)	201016	73 »	T SM		394.0	396.0	160.0	185.0	240.0	5	BA-D2TZ-1126-A
F-1000	202554	8/92 »10/98	T SM		279.4	281.6	70.0	83.5	105.3	5	T 71607617
F-4000	202431	92 »	T SM		330.2	333.0	96.5	147.5	129.7	8	79 TU-1126-F
FALCON	200141	64 »	D SM		254.0	256.0	64.3	82.0	62.0	5	C20Z-1125-A
FALCON	200149	64 »	T SM		254.0	256.0	53.0	83.0	62.0	5	C20Z-1126-A
FALCON RANCHERO	200141	73 »	T SM		254.0	256.0	64.3	82.0	62.0	5	BA-E2DZ-1123-B
FIESTA	204040	89 »	T CM		180.0	181.0	38.0	75.3	50,2 / 50,2	4	96FB-1113-AB
FIESTA II 1.6 8V	205800	02 »	T CM		203.0	204.3	46.5	81.0	53.0	4	98AB-1126-BF
FIESTA KINETIC 1.6 16V	206019	10 »	T SM		200.0	201.5	40.0	57.5	63.5	4 + 2	
FOCUS	205800	99 »	T CM		203.0	204.3	46.5	81.0	53.0	4	98AB-1126-BF
CARGO 1722 / 1730 / 1831 / 2631 / F14.000	205940	Todos	D/T SM		381.0	384.0	189.0	260.0	281.0	10	
GALAXY	203244	83 »	T CM		180.0	181.3	40.1	74.0	39.9	4	841501615A



CAMPANAS PARA FRENOS BRAKE DRUMS



Dimensiones/Dimensions
(mm)

Cant. de
Agujeros
Hole Qty

Referencia
Equipo
Original
OEM Part#

D-Del./Front
T-Tras./Rear
CM - con Maza
SM - sin Maza

ø A

ø A max

B

C

ø D

E

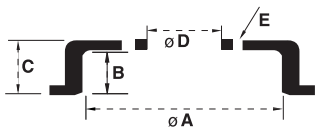
FORD (Continuación)

GALAXY	203564	88 »	T	CM	200.0	201.0	48.5	81.0	39,8 / 50,2	4	1H0.501.615.A
GRANADA (6124)	204042	80 »	T	SM	228.6	230.1	44.5	70.0	68.0	4	D8BZ 1126-A
KA	204040	89 »	T	CM	180.0	181.0	38.0	75.3	50,2 / 50,2	4	96FB-1113-AB
MONDEO	204041	97 »	T	SM	228.6	230.2	51.5	66.5	63.5	4	D27Z-1126A
MONDEO RURAL	204041	97 »	T	SM	228.6	230.2	51.5	66.5	63.5	4	D27Z-1126A
MUSTANG	204042	80 »	T	SM	228.6	230.1	44.5	70.0	68.0	4	D8BZ 1126-A
ORION	203070	Todos	T	CM	203.0	204.5	45.0	80.0	50.2 / 50.2	4	3.519.064
RANGER 150	203314	80 » 98	T	SM	279.4	280.0	70.9	93.0	73.0	5	
RANGER 10" 3/4 ton.	205366	96 » 04	T	SM	254.0	256.3	74.0	88.5	71.0	5	4L55-1126-AA
RANGER 11" 1 ton.	205363	96 » 04	T	SM	280.0	281.7	66.0	95.2	71.0	5	4L55-1126-BA
RANGER 2005	205832	04 »	T	SM	279.4	281.0	74.0	89.5	71.0	5	5L55-1126-AA
RANGER 2012 4x2 / 4x4	206029	12 »	T	SM	295.0	296.5	66.9	80.8	93.0	6 + 2	XM34-1126-BC
SIERRA	202098	84 »	T	SM	228.6	230.1	59.7	81.0	63.5	4	78 GB-1126-BA
TAUNUS	201112	74 »	T	SM	228.6	230.1	48.8	70.5	63.5	4	76BR-1126-A
TRANSIT 14"	204839	91 »	T	SM	254.0	256.0	57.0	97.0	132.0	5	
TRANSIT 15"	204840	91 »	T	SM	280.0	282.0	76.0	132.0	142.5	6	
TRANSIT 16"	205916	Todos	T	SM	280.0	282.0	82.0	104.5	118.0	5	
VERSALLES	203564	88 »	T	CM	200.0	201.0	48.5	81.0	39,8 / 50,2	4	1H0.501.615.A

GENERAL MOTORS

400	200169	64 »	T	SM	254.0	256.0	50.8	83.0	68.0	4	5.748.548
AGILE 1.4 8V	204037	2009 »	T	CM	200.0	201.0	37.0	83.0	39,8 / 50,2	4	93231267
ASTRA 1.8 8V / 2.0 8V	206065	99 » 11	T	SM	230.0	231.0	50.0	69.0	57.0	4	94725690 - 90495034
AVEO 1.6 16V	206018	08 »	T	SM	200.0	201.0	41.0	57.0	57.0	4 + 2	
BLAZER	204936	97 » 11	T	SM	279.4	281.0	74.0	89.5	71.0	5	
C10	201910	85 »	T	SM	279.4	281.0	59.7	77.0	78.5	5	3.984.855
C-20	203315	85 »	T	SM	279.4	281.0	73.9	93.0	90.6	6+3	
C-300	200128	68 »	D	SM	355.6	357.0	74.7	121.0	100.0	6	2.786.439
C-300	200163	68 »	T	SM	381.0	384.0	127.5	208.0	154.0	6	2.786.436
C-50	200128	68 »	D	SM	355.6	357.0	74.7	121.0	100.0	6	2.786.439
C-50	200163	68 »	T	SM	381.0	384.0	127.5	208.0	154.0	6	2.786.436
CHEVETTE	203243	Todos	T	SM	200.0	202.0	53.0	68.0	57.0	4+1	94608757
CHEVROLET	200316	67 » 73	T	SM	254.0	256.0	50.8	83.0	68.0	5	5.752.597
COBALT 1.4 / 1.8 / 1.3TD	206044	12 »	T	SM	200.0	202.0	43.0	62.0	60.0	4	96853514
COMBO 1.7 TDI / 1.4 / 1.6 16V	206065	01 »	T	SM	230.0	231.0	50.0	69.0	57.0	4	94725690 - 90495034
CORSA	204037	91 » 02	T	CM	200.0	201.0	37.0	83.0	39,8 / 50,2	4	93231267
CORSA II	205852	01 »	T	CM	200.0	201.0	36.6	85.9	52.9	4	93330546
CORSA PICK UP	203243	95 »	T	SM	200.0	202.0	53.0	68.0	57.0	4+1	94608757
D-20	204938	Todos	T	SM	305.0	307.5	73.5	110.0	90.4	6	
D-40	204937	Todos	T	SM	330.0	333.0	102.0	215.0	135.0	8	
D-20	203315	85 »	T	SM	279.4	281.0	73.9	93.0	90.6	6+3	
IPANEMA	203243	Todos	T	SM	200.0	202.0	53.0	68.0	57.0	4+1	94608757
KADDET	203243	Todos	T	SM	200.0	202.0	53.0	68.0	57.0	4+1	94608757
LUMINA	202198	83»	T	SM	225.0	227.3	53.9	75.0	70.0	5	25516194
MERIVA 1.8 8V / 1.8 16V	206065	02 »	T	SM	230.0	231.0	50.0	69.0	57.0	4	94725690 - 90495034
MERIVA 1.4 8V	206065	08 »	T	SM	230.0	231.0	50.0	69.0	57.0	4	94725690 - 90495034
MERIVA	205852	01 »	T	CM	200.0	201.0	36.6	85.9	52.9	4	93330546
MONTANA	206065	Todos	T	SM	230.0	231.0	50.0	69.0	57.0	4	94725690 - 90495034





CAMPANAS PARA FRENOS BRAKE DRUMS



D-Del./Front
T-Tras./Rear
CM - con Maza
SM - sin Maza

Dimensiones/Dimensions
(mm)

Cant. de
Agujeros
Hole Qty
E

Referencia
Equipo
Original
OEM Part#

GENERAL MOTORS (Continuación)

					ø A	ø A max	B	C	ø D	E	
MONTANA 1.4 8V	206065	11 »	T SM		230.0	231.0	50.0	69.0	57.0	4	94725690 - 90495034
MONZA	203243	Todos	T SM		200.0	202.0	53.0	68.0	57.0	4+1	94608757
ONIX 1.0 / 1.4	206084	13 »	T SM		200.0	202.0	35.5	58.0	60.0	4	94761125
PRISMA 1.4 8V	206084	13 »	T SM		200.0	202.0	35.5	58.0	60.0	4	94761125
PICK-UP - CHEVROLET	200190	53 » 78	D/T SM		279.4	281.0	61.8	77.0	90.0	6	3756992
PICK-UP CHREVOLET LUV	203413	Todos	T SM		254.0	255.5	61.8	71.0	96.5	6+1	94226829
SONIC 1.6 16V	206044	12 »	T SM		200.0	202.0	43.0	62.0	60.0	4	96853514
S10	204936	97»11	T SM		279.4	281.0	74.0	89.5	71.0	5	
S10	203315	85 »	T SM		279.4	281.0	74.0	93.0	90.6	6+3	
S10 NM 4x2 / 4x4 (C-S/ABS)	206092	2012 »	T SM		295.0	296.5	66.0	80.5	101.0	6+1	94726742
SPIN 1.8 8V / 1.3 TD	206095	2012 »	T SM		229.5	232.0	47.0	63.0	60.0	4	94737568
TIGRA 1.4 /1.6	204037	2009 »	T CM		200.0	201.0	37.0	83.0	39,8 / 50,2	4	93231267
VECTRA	203243	Todos	T SM		200.0	202.0	53.0	68.0	57.0	4+1	94608757
VECTRA 2.0 8V / 2.2 8V	206065	97 » 11	T SM		230.0	231.0	50.0	69.0	57.0	4	94725690 - 90495034
ZAFIRA 2.0 8V	206065	01 »	T SM		230.0	231.0	50.0	69.0	57.0	4	94725690 - 90495034

HONDA

FIT (Todos)	205943	04 » 08	T SM		180.0	181.0	38.0	56.0	61.0	4	42610510710 - 42610SADMO0
-------------	---------------	---------	------	--	-------	-------	------	------	------	---	---------------------------

I.M.E

RASTROJERO	201403	Todos	D SM		279.4	281.0	74.2	77.0	76.0	5	
RASTROJERO	201404	Todos	T SM		279.4	281.0	54.9	57.5	76.0	5	

ISUZU

PICK-UP	203413	81 »	T SM		254.0	255.5	61.8	71.0	96.5	6+1	94226829
PICK-UP (4x4 ø 296)	204941	92 »	T SM		295.0	297.0	60.0	80.0	96.5	6	
RODEO	203413	81 »	T SM		254.0	255.5	61.8	71.0	96.5	6+1	94226829
TROOPER	203413	81 »	T SM		254.0	255.5	61.8	71.0	96.5	6+1	94226829

IVECO

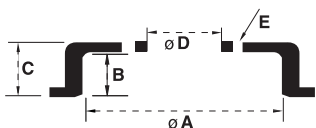
619 N/NI	203795	Todos	D SM		418.0	422.0	190.0	241.0	298.0	6	
619 N/NI	203796	Todos	T SM		418.0	422.0	190.0	214.0	298.0	6	
DAILY (h=123 mm)	205919	Todos	T SM		254.0	255.8	96.5	123.0	130.0	6+1	
DAILY (ø Ag. 130 mm)	205917	Todos	T SM		270.0	272.0	90.0	148.0	130.0	6+1	
DAILY (ø Ag. 165 mm)	205918	Todos	T SM		310.0	312.0	104.0	140.0	165.0	6+2	7172788

LADA

LADA	203307	Todos	T SM		247.4	249.0	56.9	67.0	58.0	4	2101-3502070
------	---------------	-------	------	--	-------	-------	------	------	------	---	--------------

MERCEDES BENZ

1517	201334	Todos	D/T SM		418.0	422.0	150.0	242.0	295.0	10+2	
1519	201334	Todos	D/T SM		418.0	422.0	150.0	242.0	295.0	10+2	
1112	201389	65 »	T CM		418.0	422.0	127.0	296.0	140.0	8	341.356.70.02
1114	201389	65 »	T CM		418.0	422.0	127.0	296.0	140.0	8	341.356.70.02
1114 (FRENO VOLTEO)	202538	Todos	D SM		410.0	413.0	149.1	218.0	295.0	10	360.421.06.01
1114 (FRENO VOLTEO)	202539	Todos	T SM		410.0	413.0	170.2	238.0	295.0	10	341.423.05.01
1214 (FRENO VOLTEO)	202539	Todos	T SM		410.0	413.0	170.2	238.0	295.0	10	341.423.05.01
1518 (FRENO VOLTEO)	202538	Todos	D SM		410.0	413.0	149.1	218.0	295.0	10	360.421.06.01
1526 (FRENO VOLTEO)	203320	Todos	T SM		410.0	413.0	185.4	270.0	295.0	10	385.423.03.01
180 D	203726	88	T SM		254.0	255.5	65.0	92.0	90.0	5	
COLECTIVO MB AIRE	201082	70 »	T SM		418.0	422.5	170.0	268.0	230.0	8	99.341.423.03.01
L-1621 (FRENO EATON)	204410	Todos	D SM		380.0	383.0	206.0	250.0	298.0	10	



CAMPANAS PARA FRENOS BRAKE DRUMS



D-Del./Front
T-Tras./Rear
CM - con Maza
SM - sin Maza

Dimensiones/Dimensions
(mm)

Cant. de
Agujeros
Hole Qty

Referencia
Equipo
Original
OEM Part#

MERCEDES BENZ (Continuación)

					ø A	ø A max	B	C	ø D	E	
L-608	201552	83 »	T SM		304.3	306.5	114.8	260.0	95.2 / 112.8	6	310.356.07.02
L-608	201554	83 »	D SM		304.3	306.5	114.8	195.0	52.0	6	310.334.14.04
LO 1114 (C/MAZA FRENARSA)	201391	65 »	D CM		418.0	422.0	127.0	206.0	80.0	8	341.334.70.04
M.B. (FRENO AIRE)	201082	Todos	T SM		418.0	422.0	170.0	268.0	230.0	8	99.341.423.03.01
M.B. (FRENO VOLTEO (TENSA))	203321	83	D SM		410.0	413.0	152.4	220.0	230.0	8	
M.B. (FRENO VOLTEO (TENSA))	203322	83	T SM		410.0	413.0	179.8	280.0	230.0	8	
OHL 1420 (FRENO VOLTEO)	204408	Todos	T SM		410.0	413.0	238.0	296.0	295.0	10	
SPRINTER	204943	95 »	T SM		280.0	282.0	74.0	105.0	85.0	5	6904237001

MITSUBISHI

L200 GLS / HPE 2.5 TDI (16")	205977	2003 »	T SM		270.0	272.0	76.0	93.5	108.0	6	
MONTERO	205669	91 »	T SM		228.6	230.6	38.0	60.0	90.0	5+2	MR307746
PAJERO	205669	91 »	T SM		228.6	230.6	38.0	60.0	90.0	5+2	MR307746

NISSAN

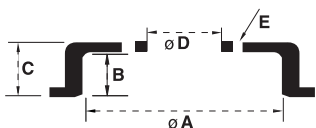
TIIDA 1.8	205996	2008 »	T SM		203.0	204.5	42.0	66.0	68.0	4	
FRONTIER 2.8 TD 4x2 / 4x4	206024	02 » 08	T SM		295.0	296.5	68.0	88.5	100.5	6	432062S600
X-TERRA 2.8 TD 4x4	206024	02 »	T SM		295.0	296.5	68.0	88.5	100.5	6	432062S600

PEUGEOT

404	201071	64 »	T SM		254.0	255.5	57.7	67.0	130.0	3	1608.000.030
405	202566	92 »	T SM		228.6	230.0	46.5	66.5	71.0	4	9150.990.880
406	202566	Todos	T SM		228.6	230.0	46.5	66.5	71.0	4	9150.990.880
504	201071	64 »	T SM		254.0	255.5	57.7	67.0	130.0	3	1608.000.030
505	201777	82 »	T SM		255.0	256.5	52.8	70.5	93.0	4 + 2	7910.028.721
106	204838	95 » 04	T CM		180.0	181.0	45.3	79.5	52.0	4	95659622 - 424744
205	204838	92 » 00	T CM		180.0	181.0	45.3	79.5	52.0	4	95659622 - 424744
206	204838	99 »	T CM		180.0	181.0	45.3	79.5	52.0	4	95659622 - 424744
206 2.0 Hdi	205945	00 »	T CM		203.0	204.0	43.0	71.5	52.0 / 56.0	4	424745 - 424747
207 Compact 1.4 8V	204838	08 »	T CM		180.0	181.0	45.3	79.5	52.0	4	95659622 - 424744
207 Compact 1.6 16V	205945	08 »	T CM		203.0	204.0	43.0	71.5	52.0 / 56.0	4	424745 - 424747
207 2.0 Hdi	205945	08 »	T CM		203.0	204.0	43.0	71.5	52.0 / 56.0	4	424745 - 424747
208 1.5 8V / 1.6 16V	205945	13 »	T CM		203.0	204.0	43.0	71.5	52.0 / 56.0	4	424745 - 424747
306	204838	95 » 03	T CM		180.0	181.0	45.3	79.5	52.0	4	95659622 - 424744
504 GR II	201777	82 »	T SM		255.0	256.5	52.8	70.5	93.0	4 + 2	7910.028.721
505 FAMILIAR	203309	Todos	T SM		254.0	255.5	70.4	77.0	93.0	5	
505 FAMILIAR	203311	Todos	T SM		254.0	255.5	70.4	77.0	93.0	4	
BOXER 1.8T	205947	94 »	T SM		254.0	256.0	65.5	98.5	79.0	5	1306211080 / 424738
BOXER 270-310-320	205946	96 »	T SM		254.0	256.0	65.5	98.5	72.0	5	1313675080 / 4449694
HOGGAR 1.4 8V / 1.6 16V	205945	10 »	T CM		203.0	204.0	43.0	71.5	52.0 / 56.0	4	424745 - 424747
PARTENER	202566	Todos	T SM		228.6	230.0	46.5	66.5	71.0	4	9150.990.880
PICK-UP T4B	203312	68»72	T SM		279.4	281.0	54.9	66.0	93.0	5	
PICK-UP T5B-504 (Bendix)	203308	Todos	T SM		279.4	281.0	63.5	75.5	93.0	5	
PICK-UP T5B-504 (Girling)	203310	Todos	T SM		279.4	281.0	63.8	75.5	93.0	4	

RENAULT

CLIO	203114	93 »	T CM		180.0	181.0	53.0	80.0	52.0	4	7702093841
CLIO Mio	203114	12 »	T CM		180.0	181.0	53.0	80.0	52.0	4	7702093841
R 4	201422	Todos	D SM		227.5	229.0	50.5	63.5	108.0	3+3+2	7702024350
R 4	201424	Todos	T SM		227.5	229.0	45.5	69.3	120.0	3	A-1017092



CAMPANAS PARA FRENOS BRAKE DRUMS



Dimensiones/Dimensions
(mm)

Cant. de
Agujeros
Hole Qty

Referencia
Equipo
Original
OEM Part#

D-Del./Front
T-Tras./Rear
CM - con Maza
SM - sin Maza

ø A

ø A max

B

C

ø D

E

RENAULT (Continuación)

R 6	201422	Todos	D SM	227.5	229.0	50.5	63.5	108.0	3+3+2	7702024350
R 6	201424	Todos	T SM	227.5	229.0	45.5	69.3	120.0	3	A-1017092
R 9	203114	93 »	T CM	180.0	181.0	53.0	80.0	52.0	4	7702093841
R11	203114	84 »	T CM	180.0	181.0	53.0	80.0	52.0	4	7702093841
R 12	201424	Todos	T SM	227.5	229.0	45.5	69.3	120.0	3	A-1017092
R 12	202561	90 »	T CM	228.0	229.0	48.5	86.0	47.0 / 52.0	3	
R 18	202498	Todos	T CM	228.0	229.0	50.8	91.0	47.0	4	7700710511
R19	203114	93 »	T CM	180.0	181.0	53.0	80.0	52.0	4	7702093841
R 21	203565	90 »	T SM	229.0	230.0	52.0	77.0	66.0	4 + 2	7700710511
EXPRESS	203565	90 »	T SM	229.0	230.0	52.0	77.0	66.0	4 + 2	7700710511
KANGOO	205982	90 »	T SM	229.0	230.0	52.0	77.0	66.0	4 + 2	8200 137 104
LOGAN 1.6 8V / 1.6 16V / 1.5 Cdi	203114	07 »	T CM	180.0	181.0	53.0	80.0	52.0	4	7702093841
MEGANE	204942	94 »	T CM	203.0	204.5	50.0	76.0	52.0	4	7700 829 099
RAMBLER	201273	65 »	D/T SM	279.4	281.0	58.4	78.8	95.0	5	2000757
SANDERO 1.6 8V / 1.6 16V	204942	07 »	T CM	203.0	204.5	50.0	76.0	52.0	4	7700 829 099
SANDERO STEPWAY	204942	09 »	T CM	203.0	204.5	50.0	76.0	52.0	4	7700 829 099
SANDERO 1.5 Cdi	204942	07 »	T CM	203.0	204.5	50.0	76.0	52.0	4	7700 829 099
SYMBOL Sistema Bosch	203114	09 »	T CM	180.0	181.0	53.0	80.0	52.0	4	7702093841
SYMBOL Sistema TRW	204942	09 »	T CM	203.0	204.5	50.0	76.0	52.0	4	7700 829 099
TORINO	201273	65 »	D/T SM	279.4	281.0	58.4	78.8	95.0	5	2000757
TRAFIC	203318	Todos	T CM	255.0	256.2	53.0	91.0	51.98 / 61.98	4	7700728956 / 7
TWINGO	203114	93 »	T CM	180.0	181.0	53.0	80.0	52.0	4	7702093841

SCANIA

111	201298	Todos	D SM	413.0	416.2	142.0	152.0	280.0	6	157.676
111	203323	Todos	T SM	412.8	416.2	213.1	226.0	280.0	6	277.311
K-112	203326	Todos	T SM	412.8	416.2	215.9	296.0	295.0	10	305.406
K-112 (URBANO)	203327	Todos	T SM	412.8	416.2	264.9	320.0	295.0	10	360.573
SERIE 4F-P94, R-T 114, R-T-P124, OMNIBUS K-124 (8")	205958	98 »	D SM	413.0	416.2	214.0	276.0	295.0	10	1.414.153
TR-112	201298	Todos	D SM	413.0	416.2	142.0	152.0	280.0	6	157.676

SUZUKI

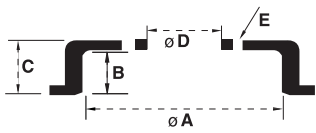
GRAND VITARA 2.8 TD 4x2 / 4x4	206024	02 »	T SM	295.0	296.5	68.0	88.5	100.5	6	432062S600
-------------------------------	--------	------	------	-------	-------	------	------	-------	---	------------

TOYOTA

HILUX	203316	Todos	D SM	254.0	256.0	59.9	71.0	67.0	5	
HILUX	203317	Todos	T SM	254.0	256.0	66.8	79.0	67.0	5	
HILUX 3.0 4x2/4x4	205944	05 »	T SM	295.0	297.0	66.0	76.0	108.0	6 + 6 + 2	42431-0K140
HILUX 4x2	205920	00 »	T SM	270.0	272.0	65.0	83.0	67.0	5 + 5 + 2	
HILUX 4x4	205937	97 » 01	T SM	295.0	297.0	65.4	83.8	106.0	6 + 6 + 2	42431-35180
HILUX 4x4 - 4x2	205937	01 » 04	T SM	295.0	297.0	65.4	83.8	106.0	6 + 6 + 2	42431-35180

VOLKSWAGEN

AMAROK 2.0 16V Turbodiesel	206008	10 »	T SM	295.0	296.5	72.2	95.5	76.0	5 + 2 + 1	2H0.609.617
CARAT	201518	83 »	T CM	180.0	181.0	39.0	74.0	39,8 / 50,2	4	305.501.615.1
FOX 1.6	205836	04 »	T SM	200.0	201.0	48.5	60.0	65.0	5 + 1	6QE609617
GACEL	201518	83 »	T CM	180.0	181.0	39.0	74.0	39,8 / 50,2	4	305.501.615.1
GOL	201518	83 »	T CM	180.0	181.0	39.0	74.0	39,8 / 50,2	4	305.501.615.1
GOL	204845	00 »	T CM	200.0	201.0	48.5	81.0	39,8 / 50,2	4	379.501.615.A
GOLF	203564	95»98	T CM	200.0	201.0	48.5	81.0	39,8 / 50,2	4	1H0.501.615.A



CAMPANAS PARA FRENOS BRAKE DRUMS



D-Del./Front
T-Tras./Rear
CM - con Maza
SM - sin Maza

Dimensiones/Dimensions
(mm)

Cant. de
Agujeros
Hole Qty

Referencia
Equipo
Original
OEM Part#

VOLKSWAGEN (Continuación)

					ø A	ø A max	B	C	ø D	E	
GOLF 1.8	203564	88 » 98	T	CM	200.0	201.0	48.5	81.0	39,8 / 50,2	4	1H0.501.615.A
GOLF 2.0	203564	96 »	T	CM	200.0	201.0	48.5	81.0	39,8 / 50,2	4	1H0.501.615.A
PARATI	203564	88 »	T	CM	200.0	201.0	48.5	81.0	39,8 / 50,2	4	1H0.501.615.A
PASSAT	201518	83 »	T	CM	180.0	181.0	39.0	74.0	39,8 / 50,2	4	305.501.615.1
POINTER	203070	Todos	T	CM	203.0	204.5	45.0	80.0	50.2 / 50.2	4	3.519.064
POLO (VIEJO MODELO)	203564	88 »	T	CM	200.0	201.0	48.5	81.0	39,8 / 50,2	4	1H0.501.615.A
POLO	204830	00 »	T	SM	200.0	201.0	48.5	60.0	65.0	4 + 1	6X0609617A
QUANTUM	203564	88 »	T	CM	200.0	201.0	48.5	81.0	39,8 / 50,2	4	1H0.501.615.A
SANTANA	201518	83 »	T	CM	180.0	181.0	39.0	74.0	39,8 / 50,2	4	305.501.615.1
SAVEIRO	204845	00 » 08	T	CM	200.0	201.0	48.5	81.0	39,8 / 50,2	4	379.501.615.A
SENDA	201518	83 »	T	CM	180.0	181.0	39.0	74.0	39,8 / 50,2	4	305.501.615.1
SURAN	205836	04 »	T	SM	200.0	201.0	48.5	60.0	65.0	5 + 1	6QE609617
TREND	204845	08 »	T	CM	200.0	201.0	48.5	81.0	39,8 / 50,2	4	379.501.615.A
VOYAGE	204845	08 »	T	CM	200.0	201.0	48.5	81.0	39,8 / 50,2	4	379.501.615.A
VW 1500	200807	82 »	T	SM	228.6	230.1	50.8	68.5	66.5	4	3.519.064

ACOPLADOS Y SEMIS

ACOPLADO	203287	Todos	D/T	SM	419.1	422.5	215.9	250.0	240.0	5	
ACOPLADO 7"	202396	Todos	D/T	SM	419.1	422.5	189.0	220.0	241.0	5	
FRENO OESTE	204470	Todos	D/T	SM	370.0	373.0	160.0	208.0	220.0	8	
HELVETICA 7" - 10 AG. APLIC. MULTIPLE / MONTENEGRO	205942	Todos	D/T	SM	420.0	423.5	188.0	260.0	298.0	10	
HELVETICA 8"	204945	Todos	D/T	SM	394.0	397.5	207.0	235.0	248.0	6	
MONTENEGRO 7"	202396	Todos	D/T	SM	419.1	422.5	189.0	220.0	241.0	5	
SOLA Y BRUSA 7"	202441	Todos	D/T	SM	419.1	422.5	188.0	220.0	240.0	6	
TRIANGULO Y OTROS	202396	Todos	D/T	SM	419.1	422.5	189.0	220.0	241.0	5	

**DISCOS PARA FRENOS
BRAKE ROTORS**



Discos para Freno

Cuando Sustituir

El disco de freno es un componente crítico de seguridad del sistema de frenos, por esta razón debe ser sustituido cuando presenta un aspecto rayado, con surcos profundos, fisuras, alabeo excesivo y/o cuando su espesor ha llegado al mínimo indicado. Este espesor está señalado en la pieza y/o en el catálogo del producto. (p/ejemplo: Esp. TH 10.8 mm.)

Instrucciones para la Sustitución

- 1) Desmontar la rueda.
- 2) Desmontar el conjunto de freno de disco, sin quitar ni aflojar el flexible de freno, proceder con cuidado para no dañar la manguera de freno:
- 3) Dependiendo del tipo de instalación:
 - 3.1) Desmontar el disco de freno (disco con apoyo interno)
 - 3.2) Desmontar la maza o cubo de rueda y a continuación el disco (disco con apoyo externo)
 - 3.3) Desmontar la maza-disco (para disco de diseño integral)
- 4) Limpiar muy bien la cara y el diámetro de montaje de la maza donde apoyará el disco. Las superficies de contacto deben estar totalmente limpias, libres de óxido, planas, exentas de rebabas y/o protuberancias (por ej.: Golpes).
- 5) Montar el disco sobre la maza, ajustando los bulones en cruz y al torque especificado por el fabricante del vehículo. Siguiendo el proceso inverso al de desmontaje y de acuerdo al tipo de fijación.



- 6) Montar las mazas (según corresponda) y ajustar los cojinetes de rueda acorde a la especificación del fabricante del vehículo.
- 7) Controlar el “alabeo” del disco, el cual no debe exceder de 0.20 mm. Si esto ocurre, desmontar y girar el disco 90° o 180°, hasta lograr “entrar en valor”. El disco debe estar correctamente fijado a la maza, previo al control.
- 8) Montar la rueda en la misma posición original apretando en cruz al torque especificado por el fabricante del vehículo.
- 9) Accionar el pedal de freno varias veces, para asegurar la proximidad al disco de las pastillas.

Desgaste Asimétrico

El desgaste de las caras frenantes debe ocurrir de forma simétrica. El desgaste asimétrico, por ejemplo, una cara nueva o con poco uso y la otra muy desgastada, denota un mal funcionamiento o mal montaje del conjunto de freno. En este caso debe inspeccionarse todo el sistema de frenos.

Instructivo de Sustitución de las Discos para Freno

Protección Antioxidante

Protección antioxidante en los casos de discos con protección antioxidante de tipo aceitosa.

Esta debe ser removida previamente, asegurando el montaje de un disco limpio y seco.

Causas principales de un alabeo lateral excesivo:

- Juego excesivo en los cojinetes o en el diámetro de montaje del disco.
- Partículas de suciedad en la superficie de montaje del disco o en la maza.
- Rebaba en los agujeros de fijación.

Importante

a) El control debe hacerse, preferentemente, con comparador (p/ej.: base magnética) tomado de la parte fija del soporte de rueda o del amortiguador.

b) El alabeo excesivo provoca vibraciones y aumento de carrera en el pedal de freno.

c) En caso de no montar la rueda en la misma posición original, será necesario balancear luego el conjunto.

d) Los discos de un mismo eje deben ser sustituidos conjuntamente, para evitar un funcionamiento irregular durante la frenada.

e) Se recomienda cambiar también las pastillas de freno cuando se sustituyen los discos. El rayado y los surcos sobre el material de fricción de las pastillas de freno usadas, provocan el rayado de la superficie de frenado del disco, con formación de zonas con un fuerte recalentamiento y reducción de la acción de frenado.

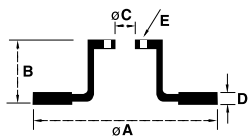
f) Para obtener un funcionamiento correcto de los nuevos discos de freno, es necesario realizar un pequeño rodaje de asentamiento, evitando efectuar frenadas energéticas durante los primeros 300 km.

g) Es conveniente controlar periódicamente el espesor y estado de los discos de freno (por ejemplo, cada vez que se revisen y/o cambien las pastillas de freno).

h) Se recomienda balancear el conjunto rodante dinámicamente, luego de cambiar el disco de freno.

i) Recuerde que los discos de freno y las pastillas son componentes críticos de seguridad. La inspección regular es esencial para su seguridad.

Los Discos Raybestos están fabricados con las más estrictas normas de Calidad, Seguridad y Cuidado de medio Ambiente, lo que le ha permitido por más de 30 años abastecer con su amplia gama de productos al mercado de reposición como así también ser proveedora de E.O. y exportar a los países más desarrollados del mundo.



DISCOS PARA FRENOS BRAKE ROTORS



Dimensiones/Dimensions (mm)

Min. D

Cant. de
Agujeros
Hole Qty
E

Referencia
Equipo
Original
OEM Part#

D-Del./Front
T-Tras./Rear
S-Sol.
CM - con Maza
V-Vent.
SM - sin Maza

AGRALE

CAMION SERIE 6000	205975	04 »	D	S	SM	305.0	111.5	152.4	30.5	28.5	6	6008005199002
FURGON SERIE 6000	205975	04 »	D	S	SM	305.0	111.5	152.4	30.5	28.5	6	6008005199002
MT15 / MT17 (PUMA D12)	206046	10 »	D	V	SM	430.0	131.0	203.0	45.0	37	10	
OMNIBUS VOLARE 5000	206052	94 » 98	D	V	SM	305.0	111.5	152.5	30.5	28.5	6	6013005037004
OMNIBUS VOLARE 6000	206052	01 » 05	D	V	SM	305.0	111.5	152.5	30.5	28.5	6	6013005037004

ALFA ROMEO

145	202567	92 »	D	V	SM	257.0	40.5	59.0	20.0	18.2	4+2	756693
145 1.3i	205987	94 » 96	D	S	SM	257.5	40.5	59.0	12.0	10.2	4	71738373
145 1.6i	205987	94 » 96	D	S	SM	257.5	40.5	59.0	12.0	10.2	4	71738373
146 1.3i / 1.6i / 1.9TD	202567	92 »	D	V	SM	257.0	40.5	59.0	20.0	18.2	4+2	756693
155 2.0T 19V / 2.5i V6 / TD 2.5	204404	92 » 97	D	V	SM	284.0	43.5	59.0	22.0	20.2	4+2	82451746
155 TODOS	203238	93 »	T	S	SM	240.0	40.0	59.0	11.0	9.2	4+2	7663465
155 T Spark 1.8i / 2.0i	202567	92 »	D	V	SM	257.0	40.5	59.0	20.0	18.2	4+2	756693
156 T Spark	204544	98 »	T	S	SM	251.5	50.5	59.0	10.0	9	5+1	
156 T Spark	204543	98 »	D	V	SM	284.0	43.4	59.0	22.0	20	5+1	
164 2.0 T Spark / 3.0i / 2.5 TD	204544	91 »	T	S	SM	251.5	50.5	59.0	10.0	9	5+1	
164 2.0 T Spark	204397	90 »	T	S	SM	251.0	50.5	59.0	10.0	9	4+2	
164 2.0 T Spark	204396	90 »	D	V	SM	257.0	50.7	59.0	22.0	20.2	4+2	60807625/5172 - 82433789
164 2.0i T / 2.5 TD	204543	98 »	D	V	SM	284.0	43.4	59.0	22.0	20	5+1	
GTV	204543	95 »	D	V	SM	284.0	43.4	59.0	22.0	20	5+1	
SPIDER	204543	95 »	D	V	SM	284.0	43.4	59.0	22.0	20	5+1	

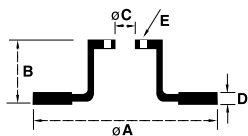
ASIA

ASIA HI	205611	94 »	D	V	SM	261.0	20.5	86.0	20.0	18	6	
ASIA TOPIC 2.2 / 2.7	205611	94 »	D	V	SM	261.0	20.5	86.0	20.0	18	6	

AUDI

80	201519	91 »	D	S	SM	239.0	35.0	65.0	12.0	10.5	4+1	
80	202568	73 » 87	D	V	SM	239.0	38.7	65.0	20.0	18	4+1	
90	201519	91 »	D	S	SM	239.0	35.0	65.0	12.0	10.5	4+1	
90	202568	73 » 87	D	V	SM	239.0	38.7	65.0	20.0	18	4+1	
90	204044	83 » 91	D	V	SM	256.0	39.0	65.0	20.0	18	4+1	
100	204398	90 » 94	D	V	SM	288.0	46.5	68.0	25.0	23	5	
4000	201519	91 »	D	S	SM	239.0	35.0	65.0	12.0	10.5	4+1	
90 COUPE	204044	83 » 91	D	V	SM	256.0	39.0	65.0	20.0	18	4+1	
A1 1.2 TFSI	204558	11 »	D	V	SM	256.0	36.6	65.0	22.0	19	5+1	1J0615301LD - 5Z0615301B
A1 1.2 TFSI	205614	11 »	T	S	SM	232.0	39.3	65.0	9.0	7	5+1	
A1 1.4 TFSI / SPORTBACK	205690	11 »	D	V	SM	288.0	34.2	65.0	25.0	22	5+1	
A1 SPORTBACK 1.2 TFSI / 1.4 TFSI	205690	11 »	D	V	SM	288.0	34.2	65.0	25.0	22	5+1	
A3 3.2 V6 24V	206053	03 » 07	T	S	SM	260.0	48.3	65.0	12.0	10	5 + 4 + 1	1K0615601L
A3 1.6 16V FSI / 1.9 TDI / 2.0 TDI	206001	04 »	D	V	SM	288.0	50.0	65.0	25.0	22	5 + 4 + 1	1K0315301T
A3 1.6i / 1.8 20V / 1.8i 20V T	205614	96 » 07	T	S	SM	232.0	39.3	65.0	9.0	7	5+1	
A3 1.8 20V	204559	96 »	D	V	SM	280.0	36.6	65.0	22.0	19	5+1	
A3 1.8i 20V TURBO	205690	96 »	D	V	SM	288.0	34.2	65.0	25.0	22	5+1	
A3 1.9 TDI	205614	96 » 01	T	S	SM	232.0	39.3	65.0	9.0	7	5+1	
A3 1.9 TDI	205690	96 » 01	D	V	SM	288.0	34.2	65.0	25.0	22	5+1	
A3 1.2 TSI	206086	10 »	T	S	SM	272.0	48.3	65.0	10.0	9	5 + 4 + 1	1K0615601AA
A3 1.4 TFSI	206053	09-07 »	T	S	SM	260.0	48.3	65.0	12.0	10	5 + 4 + 1	1K0615601L





DISCOS PARA FRENOS BRAKE ROTORS



D-Del./Front
T-Tras./Rear
S-Sol. CM - con Maza
V-Vent. SM - sin Maza

Dimensiones/Dimensions (mm)

Min. D	B	øC	D	Cant. de A agujeros Hole Qty E	Referencia Equipo Original OEM Part#
--------	---	----	---	--------------------------------	--------------------------------------

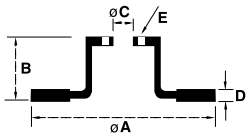
AUDI (Continuación)

Modelo	Código	Year	Drive	Trans	SM	ø A	B	ø C	D	Min. D	Cant. de A agujeros Hole Qty E	Referencia Equipo Original OEM Part#
A3 1.6 / 1.6 FSI / 1.9 TDI (llanta 15")	205866	03 »	T	S	SM	255.0	51.5	65.0	9.5	7	5	1K0615601K
A3 SPORTBACK 1.4 TFSI	206053	09/07 »	T	S	SM	260.0	48.3	65.0	12.0	10	5 + 4 + 1	1K0615601L
A3 1.6 16V / 1.6 16V FSI (llanta 15")	205865	03 »	D	V	SM	280.0	49.6	65.0	22.0	19	5 + 4 + 1	1K0615301S
A3 1.6i	204558	96 »	D	V	SM	256.0	36.6	65.0	22.0	19	5+1	1J0615301L/D - 5Z0615301B
A3 1.9 TDI	206053	05/03 »	T	S	SM	260.0	48.3	65.0	12.0	10	5 + 4 + 1	1K0615601L
A3 1.9 TDI (llanta 15")	205865	03 »	D	V	SM	280.0	49.6	65.0	22.0	19	5 + 4 + 1	1K0615301S
A3 2.0 16V FSI (llanta 17")	205867	05 »	D	V	SM	312.0	50.0	65.0	25.0	22	5 + 4 + 1	1K0615301AA
A3 2.0 16V FSI (llanta 17")	206010	04 » 07	T	S	SM	286.0	48.5	65.0	12.0	10	5 + 4 + 1	1K0615601M
A3 2.0 FSI / 2.0 TDI	206010	03 »	T	S	SM	286.0	48.5	65.0	12.0	10	5 + 4 + 1	1K0615601M
A3 2.0 FSI (llanta 16")	205867	03 »	D	V	SM	312.0	50.0	65.0	25.0	22	5 + 4 + 1	1K0615301AA
A3 QUATTRO 2.0	205867	06 » 08	D	V	SM	312.0	50.0	65.0	25.0	22	5 + 4 + 1	1K0615301AA
A3 SPORTBACK 1.6 TFSI	206086	04 »	T	S	SM	272.0	48.3	65.0	10.0	9	5 + 4 + 1	1K0615601AA
A3 SPORTBACK QUATRO	206053	04 » 07	T	S	SM	260.0	48.3	65.0	12.0	10	5 + 4 + 1	1K0615601L
A4 / A6	205889	97 »	D	V	SM	312.0	46.2	68.0	25.0	23	10	8D0615301J
A4 1.8 20V T / 2.4 / 2.6 / 1.9 TDI	204398	95 » 01	D	V	SM	288.0	46.5	68.0	25.0	23	5	
A4 1.6 TD	205613	94 » 97	D	S	SM	280.0	46.2	68.0	13.0	11	5	8D0615301A
A4 1.8	205612	94 »	D	S	SM	288.0	46.2	68.0	15.0	13	5	4A0615301B
A4 AVANT 2.0 TFSI	206072	07 »	D	V	SM	320.0	52.1	68.0	30.0	28	5 + 1	8K0615301A
A4 2.0 T / 2.0 TDI V6	205890	01 »	T	S	SM	255.0	39.7	68.0	12.0	10	5	8E0615601Q
A4 2.0 TDI QUATTRO	206072	07 »	D	V	SM	320.0	52.1	68.0	30.0	28	5 + 1	8K0615301A
A4 3.2 FSI QUATTRO	206072	07 »	D	V	SM	320.0	52.1	68.0	30.0	28	5 + 1	8K0615301A
A4 S4 QUATTRO	206071	11 »	D	V	SM	345.0	52.1	68.0	29.5	28	5 + 1	8K0615301K / M
A5 3.2 FSI	206072	08 »	D	V	SM	320.0	52.1	68.0	30.0	28	5 + 1	8K0615301A
A5 SPORTBACK 2.0 TFSI QUATTRO	206072	08 »	D	V	SM	320.0	52.1	68.0	30.0	28	5 + 1	8K0615301A
A5 S5 QUATTRO	206071	07 »	D	V	SM	345.0	52.1	68.0	29.5	28	5 + 1	8K0615301K / M
A6	204564	94 »	T	S	SM	245.0	64.0	68.0	10.0	8	5	
A6 2.6 V6	204398	94 » 97	D	V	SM	288.0	46.5	68.0	25.0	23	5	
A6 2.8 V6 / QUATTRO	204398	94 » 97	D	V	SM	288.0	46.5	68.0	25.0	23	5	
Q5 2.0 TDI / 2.0 TDI QUATTRO	206071	08 »	D	V	SM	345.0	52.1	68.0	29.5	28	5 + 1	8K0615301K - 8K0615301M
Q5 2.0 TFSI QUATTRO	206071	08 »	D	V	SM	345.0	52.1	68.0	29.5	28	5 + 1	8K0615301K / M
Q5 2.0 TFSI QUATTRO	206072	09 »	D	V	SM	320.0	52.1	68.0	30.0	28	5 + 1	8K0615301A
Q5 3.0 TDI QUATTRO	206071	08 »	D	V	SM	345.0	52.1	68.0	29.5	28	5 + 1	8K0615301K / M
Q5 3.2 FSI QUATTRO	206071	08 »	D	V	SM	345.0	52.1	68.0	29.5	28	5 + 1	8K0615301K / M
Q5 3.2 FSI QUATTRO	206072	09 »	D	V	SM	320.0	52.1	68.0	30.0	28	5 + 1	8K0615301A
QUATTRO	204044	83 » 91	D	V	SM	256.0	39.0	65.0	20.0	18	4+1	
QUATTRO 1.8i 20V TURBO	205614	97 » 03	T	S	SM	232.0	39.3	65.0	9.0	7	5+1	
S4 3.0 / S5 4.2	206072	12 »	D	V	SM	320.0	52.1	68.0	30.0	28	5 + 1	8K0615301A
TT	205867	08 » 08	D	V	SM	312.0	50.0	65.0	25.0	22	5 + 4 + 1	1K0615301AA

BMW

316	203220	84 »	D	S	SM	260.0	35.1	66.0	22.0	20.4	4+1	34111154747
316	205621	82 » 91	D	V	SM	260.0	35.1	66.0	22.0	20.4	4+1	
318	205621	82 » 91	D	V	SM	260.0	35.1	66.0	22.0	20.4	4+1	
316i	204399	90 » 00	D	S	SM	286.0	51.5	79.0	12.0	10.4	5+1	
318 Compact	204399	94 » 00	D	S	SM	286.0	51.5	79.0	12.0	10.4	5+1	
318 (Todos)	204399	94 » 99	D	S	SM	286.0	51.5	79.0	12.0	10.4	5+1	
318i	204399	90 » 98	D	S	SM	286.0	51.5	79.0	12.0	10.4	5+1	
318i / ic / is	203219	90 »	D	V	SM	286.0	51.5	79.0	22.0	20.4	5+1	34116766239/1154750





DISCOS PARA FRENOS BRAKE ROTORS

Raybestos®
The best in brakes

Dimensiones/Dimensions (mm)

Min. D

Cant. de Agujeros Hole Qty E

Referencia Equipo Original OEM Part#

D-Del./Front T-Tras./Rear
 S-Sol. CM - con Maza V-Vent. SM - sin Maza

BMW (Continuación)

Modelo	Part No.	ØA	B	ØC	D	Min. D	Cant. de Agujeros Hole Qty E	Referencia Equipo Original OEM Part#		
318i / ic / is	203220	84 »	D S SM	260.0	35.1	66.0	22.0	20.4	4+1	34111154747
320i	203219	90 »	D V SM	286.0	51.5	79.0	22.0	20.4	5+1	34116766239/1154750
320i	203220	84 »	D S SM	260.0	35.1	66.0	22.0	20.4	4+1	34111154747
320i	205617	94 »	T V SM	276.0	60.1	75.0	19.0	18.4	5+1	
320i	205621	82 » 91	D V SM	260.0	35.1	66.0	22.0	20.4	4+1	
323i	203220	84 »	D S SM	260.0	35.1	66.0	22.0	20.4	4+1	34111154747
323i	205621	82»91	D V SM	260.0	35.1	66.0	22.0	20.4	4+1	
324td	203220	84 »	D S SM	260.0	35.1	66.0	22.0	20.4	4+1	34111154747
324td	205621	82 » 91	D V SM	260.0	35.1	66.0	22.0	20.4	4+1	
325 e / es / i / ic / is / ix	203220	84 »	D S SM	260.0	35.1	66.0	22.0	20.4	4+1	34111154747
325 e / es / i / ic / ix / tds	203219	90 »	D V SM	286.0	51.5	79.0	22.0	20.4	5+1	34116766239/1154750
325i	205621	82 » 91	D V SM	260.0	35.1	66.0	22.0	20.4	4+1	
328i	205620	98 »	D V SM	300.0	51.5	79.0	22.0	20.4	5	34116766224
525	203221	87 »	D V SM	302.0	76.1	79.0	22.0	20.4	5+2	34 11 1 158 040
528i	205618	96 »	T V SM	298.0	61.0	75.0	20.0	18.4	5+1	
530i	203221	87 »	D V SM	302.0	76.1	79.0	22.0	20.4	5+2	34111158040
533i	203221	87 »	D V SM	302.0	76.1	79.0	22.0	20.4	5+2	34111158040
540 i	203221	87 »	D V SM	302.0	76.1	79.0	22.0	20.4	5+2	34111158040
735i / iL	203221	87 »	D V SM	302.0	76.1	79.0	22.0	20.4	5+2	34111158040
740i / iLi	203221	87 »	D V SM	302.0	76.1	79.0	22.0	20.4	5+2	34111158040
750 II	203221	87 »	D V SM	302.0	76.1	79.0	22.0	20.4	5+2	34111158040
SEDAN	203221	87 »	D V SM	302.0	76.1	79.0	22.0	20.4	5+2	34111158040
TOURING WAGON	203221	87 »	D V SM	302.0	76.1	79.0	22.0	20.4	5+2	34111158040
Z1	203220	84 »	D S SM	260.0	35.1	66.0	22.0	20.4	4+1	34111154747
Z1	205621	82 » 91	D V SM	260.0	35.1	66.0	22.0	20.4	4+1	
Z3	203219	90 »	D V SM	286.0	51.5	79.0	22.0	20.4	5+1	34116766239/1154750

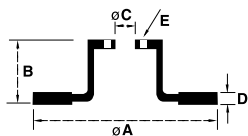
CHERY

TIGGO (Todos)	206039	09 »	D V SM	265.0	49.0	62.0	25.0	23	5	T113501075
---------------	--------	------	--------	-------	------	------	------	----	---	------------

CHRYSLER - DODGE - JEEP

1500 (BENDIX)	201315	77 »	D S SM	244.5	24.0	66.7	12.6	10.7	4	9-71301803-N
1500 (PINZA IMPORTADA)	200815	71»74	D S SM	241.3	24.5	66.7	9.5	8.7	4	3.519.409
1500 (TENSA)	201098	73 »	D S SM	248.0	24.0	66.7	10.0	9	4	9-71302431-N
CARAVAN (llanta 15")	205625	93 » 97	D V SM	282.0	38.0	73.5	24.0	22.4	5	4721821
CARAVAN	206014	08 » 09	D V SM	302.0	38.0	72.5	28.0	26.4	5	04721995AA
CHEROKEE	205648	99 »	D V SM	305.0	63.5	72.0	26.0	24.5	5	
CHEROKEE	205880	02 »	T S SM	290.0	56.3	72.0	12.5	11.25	5	04721023AF
CHEROKEE	205881	02 »	D V SM	302.0	39.0	73.4	28.0	26.5	5	4683918AB
D50 4WD	205961	86 » 94	D V SM	277.0	45.0	87.0	22.0	20.4	6	
DAKOTA	204540	96 »	D V SM	287.0	64.0	73.5	24.0	22.6	6	
GRAND CARAVAN (llanta 15")	205625	93 » 97	D V SM	282.0	38.0	73.5	24.0	22.4	5	4721821
GRAND CHEROKEE	205648	99 »	D V SM	305.0	63.5	72.0	26.0	24.5	5	
GRAND CHEROKEE	204539	Todos	T S SM	285.0	59.7	72.0	10.8	9.5	5	
GRAND CHEROKEE II	205883	99 »	T S SM	305.0	76.0	72.0	10.0	8.5	5	52 098 666
JOURNEY 2.4 / 2.7 / 3.5	206014	09 »	D V SM	302.0	38.0	72.5	28.0	26.4	5	04721995AA
JOURNEY 2.7	206041	09 »	T S SM	305.0	33.0	72.5	12.0	10.4	5	
NEON	204537	Todos	D V SM	257.0	38.0	61.0	20.0	18.4	5	
NEON	204538	Todos	T S SM	270.0	53.5	57.5	9.0	7.3	5	4509553AB/AC - 04616433





DISCOS PARA FRENOS BRAKE ROTORS



Dimensiones/Dimensions (mm)

Min. D	B	ø C	D
--------	---	-----	---

Cant. de Agujeros Hole Qty E

Referencia Equipo Original OEM Part#

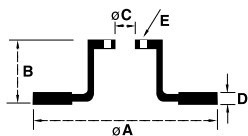
CHRYSLER - DODGE - JEEP (Continuación)

Modelo	Código	Año	Tracción	Motor	Material	ø A	B	ø C	D	Min. D	Cant. de Agujeros Hole Qty E	Referencia Equipo Original OEM Part#
POLARA	200548	68 »	D	S	SM	277.6	49.0	78.0	12.8	11.4	5	2.929.462
PT Cruiser	205870	99 »	D	V	SM	280.0	39.2	61.0	23.0	21.4	5	4509994AA
PT Cruiser	205871	02 » 06	T	S	SM	270.0	53.0	57.5	9.0	7	5	4509553B
RAM 2500 2.5D 4x4	206074	04 » 11	D	V	SM	353.0	102.0	122.5	35.5	34	8	52121050AA
RAM 2500 2.5D 4x4	206075	04 » 11	T	V	SM	352.5	131.0	123.0	30.2	28.4	8	52010144AA
RAM 50	205961	87 » 93	D	V	SM	277.0	45.0	87.0	22.0	20.4	6	
SPIRIT / CARAVAN (llanta 14")	203761	93 » 97	D	V	SM	260.0	37.8	61.0	24.0	22.4	5	
TOWN & COUNTRY 3.3 / 3.8 / 4.0	206014	08 »	D	V	SM	302.0	38.0	72.5	28.0	26.4	5	04721995AA
TOWN & COUNTRY / ROUTAN 3.8	206041	08 »	T	S	SM	305.0	33.0	72.5	12.0	10.4	5	
WRANGLER 3.8 / 3.6 V6	206076	07 »	D	V	SM	302.0	55.0	72.0	28.0	26.4	5	
WRANGLER 3.8 / 3.6 V6	206077	07 »	T	S	SM	316.0	76.5	72.0	12.0	10.4	5	

CITROËN 10550

Modelo	Código	Año	Tracción	Motor	Material	ø A	B	ø C	D	Min. D	Cant. de Agujeros Hole Qty E	Referencia Equipo Original OEM Part#
AX 1.4 GTI	203300	91 »	D	V	SM	247.0	44.2	66.0	20.5	18.5	4+2	91517695
AX GTI	203301	91 »	D	V	SM	247.0	34.0	66.0	20.4	18.5	4+2	
BERLINGO 1.4 / 1.6 16V	202565	94 » 04	D	V	SM	266.0	27.7	66.0	20.4	18.5	4+2	9.563.204.880
BERLINGO 1.4 / 1.6 16V / 1.9D	205674	05 »	D	V	SM	266.0	34.4	66.0	22.0	20	4+2	4246W7 - 4249G1
BERLINGO 1.6 HDI	205674	10 »	D	V	SM	266.0	34.4	66.0	22.0	20	4+2	4246W7 - 4249G1
BERLINGO 1.9D	205672	96 » 04	D	S	SM	266.0	27.2	66.0	13.0	11	4 + 2	
BX 1.9 GTI 16V	202565	92 »	D	V	SM	266.0	27.7	66.0	20.4	18.5	4+2	95632048
C-15 Diesel	203299	84 »	D	S	SM	247.0	34.5	66.0	10.0	9	4+2	
C3 1.1/1.4 / 1.4HDI C/ABS	205672	Todos	D	S	SM	266.0	27.2	66.0	13.0	11	4 + 2	
C3 1.4 16V / 1.4 HDI / 1.6 16V	205674	02 »	D	V	SM	266.0	34.4	66.0	22.0	20	4+2	4246W7 - 4249G1
C3 1.4 16V / 1.6 16V	205673	02 »	T	S	SM	247.0	35.3	71.0	9.0	8	4	4246W9 - 424990
C3 1.5	205674	13 »	D	V	SM	266.0	34.4	66.0	22.0	20	4+2	4246W7 - 4249G1
C3 1.6 Vti	205675	13 »	D	V	SM	283.0	34.4	66.0	26.0	24	4+2	4246W8 - 424917
C3 AIRCROSS 1.6 16V	205675	10 »	D	V	SM	283.0	34.4	66.0	26.0	24	4+2	4246W8 - 424917/J6
C3 PICASSO 1.6 16V	205675	10 »	D	V	SM	283.0	34.4	66.0	26.0	24	4+2	4246W8 - 424917/J6
C4 1.6 16V	205674	07 »	D	V	SM	266.0	34.4	66.0	22.0	20	4+2	4246W7 - 4249G1
C4 1.6 16V / 1.6 HDi / 2.0 16V	205673	07 »	T	S	SM	247.0	35.3	71.0	9.0	8	4	4246W9 - 424990
C4 1.6 16V / 2.0 16V	206042	10/06 »	T	S	CM	249.0	69.2	62.0	9.0	8	4	424919 - 424932 - 4246Z9
C4 1.6 HDi / 2.0 16V / 2.0 HDi	205675	07 »	D	V	SM	283.0	34.4	66.0	26.0	24	4+2	4246W2
C4 GRAND PICASSO 2.0 16V (Ate)	206015	09 »	D	V	SM	302.0	34.2	66.0	26.0	24	4+2	424964 - 424933 - 4246C0
C4 Lounge 1.6 HDi / 2.0 16V	205675	13 »	D	V	SM	283.0	34.4	66.0	26.0	24	4+2	4246W8 - 424917/J6
C4 Lounge 1.6 HDi / 2.0 16V / 1.6 THP	206061	13 »	T	S	CM	249.0	73.0	62.0	9.0	7	4	424966
C4 Lounge 1.6 THP	206015	13 »	D	V	SM	302.0	34.2	66.0	26.0	24	4+2	424964 - 424933 - 4246C0
C4 PICASSO 2.0 16V (Ate)	206015	08 » 13	D	V	SM	302.0	34.2	66.0	26.0	24	4+2	424964 - 424933 - 4246C0
C4 PICASSO 2.0 16V	206042	09 »	T	S	CM	249.0	69.2	62.0	9.0	8	4	424919 - 424932 - 4246Z9
C4 VTR 2.0 16V	206042	06 »	T	S	CM	249.0	69.2	62.0	9.0	8	4	424919 - 424932 - 4246Z9
C5 1.8 16V	205674	01 »	D	V	SM	266.0	34.4	66.0	22.0	20	4+2	4246W7 - 4249G1
C5 2.0 16V	205675	01 »	D	V	SM	283.0	34.4	66.0	26.0	24	4+2	4246W2
C5 (Todos)	205876	00 »	T	S	SM	276.0	62.0	71.0	14.0	12	4	42 46 W4
DC3 1.6 Vti	205675	12 »	D	V	SM	283.0	34.4	66.0	26.0	24	4+2	4246W8 - 424917/J6
GRAND C4 PICASSO 2.0 16V	206042	08 »	T	S	CM	249.0	69.2	62.0	9.0	8	4	424919 - 424932 - 4246Z9
JUMPER (llanta 15")	206023	95 » 09	T	S	SM	280.0	82.0	72.0	16.0	14.2	5	46833806 4246Y9/7 - 71740118
JUMPER (llanta 16")	206050	95 » 09	T	S	SM	280.0	82.0	79.0	16.0	14.2	5	46833807 - 4246Z3/Z1 134987180





DISCOS PARA FRENOS BRAKE ROTORS



Dimensiones/Dimensions (mm)

Min. D

Cant. de
Agujeros
Hole Qty

E

Referencia
Equipo
Original
OEM Part#

D-Del./Front
T-Tras./Rear
S-Sol.
CM - con Maza
V-Vent.
SM - sin Maza

CITROËN (Continuación)

Modelo	Código	Años	Del.	Tras.	SM	Ø A	B	Ø C	D	Min. D	Cant. de Agujeros	Referencia Original
JUMPER 2.3 HDI (llanta 15")	206056	10 » 13	T	S	SM	280.0	80.0	72.0	16.0	14.2	5	424930 - 424931 - 51749274/0245
JUMPER 2.3 HDI (llanta 16")	206057	10 » 13	T	S	SM	280.0	80.0	79.0	16.0	14.2	5	4249K8 - 424940 - 424939
JUMPER 27/31	205506	94 »	D	V	SM	280.0	65.5	73.0	24.0	22	5	1300501080
JUMPER 35 (1.8T)	204048	94 »	D	S	SM	280.0	65.5	73.0	18.0	15.9	5+2	
JUMPER 35 (1.8T)	205626	94 »	D	V	SM	300.0	65.5	80.0	24.0	22	5+2	
JUMPY	205627	Todos	D	V	SM	257.0	40.5	59.0	20.0	18.2	5 + 1	
SAXO 1.1 / 1.4	203299	84 »	D	S	SM	247.0	34.5	66.0	10.0	9	4+2	
SAXO 1.1 (ATE/ AX)	205628	00 »	D	S	SM	238.0	29.0	57.0	8.0	6	3	
SAXO 1.6 i	203301	91 »	D	V	SM	247.0	34.0	66.0	20.4	18.5	4+2	
VISA	203300	91 »	D	V	SM	247.0	44.2	66.0	20.5	18.5	4+2	91517695
VISA ZX DIESEL	203299	91 »	D	S	SM	247.0	34.5	66.0	10.0	9	4+2	91508338
XANTIA	202565	92 »	D	V	SM	266.0	27.7	66.0	20.4	18.5	4+2	95632048
XANTIA	203300	91 »	D	V	SM	247.0	44.2	66.0	20.5	18.5	4+2	91517695
XANTIA	204050	95 »	D	V	SM	283.0	28.2	66.0	26.0	24.2	4+2	
XANTIA 2.0 16V	204546	96 »	D	V	SM	283.0	27.2	66.0	22.0	20	4+2	
XANTIA BREAK 2.0	204050	95 »	D	V	SM	283.0	28.2	66.0	26.0	24.2	4+2	
XSARA	203301	98 »	D	V	SM	247.0	34.0	66.0	20.4	18.5	4+2	
XSARA 1.6 16V / 1.8i 16V / 2.0 16V	204931	97 »	T	S	SM	247.0	25.3	71.0	8.0	6	4+2	95661749
XSARA PICASSO	204931	00 »	T	S	SM	247.0	25.3	71.0	8.0	6	4+2	95661749
XSARA PICASSO 1.6 / 1.8 / 2.0	202565	00 »	D	V	SM	266.0	27.7	66.0	20.4	18.5	4+2	95632048
XSARA PICASSO 1.6 16V	205674	01 »	D	V	SM	266.0	34.4	66.0	22.0	20	4+2	4246W7 - 4249G1
ZX	203300	91 »	D	V	SM	247.0	44.2	66.0	20.5	18.5	4+2	91517695
ZX	204931	97 »	T	S	SM	247.0	25.3	71.0	8.0	6	4+2	95661749
ZX (Todos)	204931	91 » 98	T	S	SM	247.0	25.3	71.0	8.0	6	4+2	95661749
ZX TD 1.8	204401	91 »	T	S	SM	247.0	20.3	71.0	8.0	7	4+2	
ZX TD 1.8	203301	91 »	D	V	SM	247.0	34.0	66.0	20.4	18.5	4+2	

DACIA

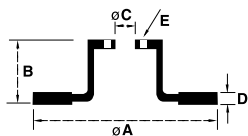
1310	201503	Todos	D	S	SM	228.5	38.4	83.0	10.0	9	6	7700502515
1410	201503	Todos	D	S	SM	228.5	38.4	83.0	10.0	9	6	7700502515
1410 TS / TLX	202237	Todos	D	S	SM	238.0	41.3	61.0	12.0	10.5	4+2	

DAEWOO

CIELO	203557	Todos	D	S	SM	236.0	41.2	60.0	12.7	9.7	4+2+1	
CIELO 16V	203242	Todos	D	V	SM	236.0	41.0	60.0	20.0	18.3	4+2+1	90121445
ESPERO 1.5i 16V / 2.0i / 1.8i	205960	95 »	D	V	SM	256.0	41.0	60.0	24.0	22	4	
DAMAS	205629	Todos	D	S	SM	215.0	33.0	86.0	10.0	8	4	96052404
ESPERO 1.6 / 1.8	204403	89 »	D	V	SM	256.0	41.0	60.0	24.0	21.4	4+2+1	
LANOS 1.3	203242	Todos	D	V	SM	236.0	41.0	60.0	20.0	18.3	4+2+1	90121445
LANOS 1.5 / 1.6i 16V	204403	89 »	D	V	SM	256.0	41.0	60.0	24.0	21.4	4+2+1	
LANOS 1.6i 16V / 1.5i	205960	97 »	D	V	SM	256.0	41.0	60.0	24.0	22	4	
MATIZ	205629	Todos	D	S	SM	215.0	33.0	86.0	10.0	8	4	96052404
RACER	203557	Todos	D	S	SM	236.0	41.2	60.0	12.7	9.7	4+2+1	
RACER 1.5i 16V GLX / GTX	205960	95 »	D	V	SM	256.0	41.0	60.0	24.0	22	4	
TICO	205629	Todos	D	S	SM	215.0	33.0	86.0	10.0	8	4	96052404

DATSUN

180B / 200SX / B210	201955	78 » 80	D	S	SM	245.0	35.5	73.0	10.0	9	4	40206-U6700
---------------------	--------	---------	---	---	----	-------	------	------	------	---	---	-------------



DISCOS PARA FRENOS BRAKE ROTORS



Dimensiones/Dimensions (mm)

Min. D	B	ø C	D
--------	---	-----	---

Cant. de Agujeros Hole Qty E

Referencia Equipo Original OEM Part#

19XX 20XX

D-Del./Front
T-Tras./Rear
S-Sol. CM - con Maza
V-Vent. SM - sin Maza

DEUTZ

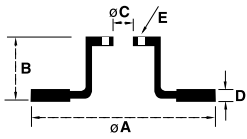
AGRALE 1800 DYNAMIC	203239	86 »	D	V	SM	305.0	116.0	152.5	30.0	28.3	8	
---------------------	---------------	------	---	---	----	-------	-------	-------	------	------	---	--

EL DETALLE

OA 105	204681	96 »	D	S	SM	432.0	135.0	190.0	45.0	41	10	
--------	---------------	------	---	---	----	-------	-------	-------	------	----	----	--

FIAT

125	200615	63 »	D	S	SM	236.0	54.4	72.0	10.0	9	4+2	416.12
128	201185	72 »	D	S	SM	227.0	45.0	68.0	10.0	9	4+2	420.8311
132	201185	72 »	D	S	SM	227.0	45.0	68.0	10.0	9	4+2	420.8311
133	201185	72 »	D	S	SM	227.0	45.0	68.0	10.0	9	4+2	420.8311
147	201775	83 »	D	S	SM	227.0	45.8	62.0	10.8	9	4+2	438.5812
1500	200615	63 »	D	S	SM	236.0	54.4	72.0	10.0	9	4+2	416.12
1600	200615	63 »	D	S	SM	236.0	54.4	72.0	10.0	9	4+2	416.12
128 SUPER EUROPA	201775	Todos	D	S	SM	227.0	45.8	62.0	10.8	9	4+2	4385812
500 1.4 T-JET Abarth	204404	12 »	D	V	SM	284.0	43.5	59.0	22.0	20.2	4+2	60813038
500 1.4 8V Fire Evo / 1.4 16V Multi Air	203238	08 »	T	S	SM	240.0	40.0	59.0	11.0	9.2	4+2	7663465
500 1.4 8V Fire Evo / 1.4 16V Multi Air	205956	08 »	D	V	SM	257.0	40.5	59.0	22.0	20	4+2	7779409 - 46416712
500 Automático	205956	11 »	D	V	SM	257.0	40.5	59.0	22.0	20	4+2	7779409 - 46416712
500 1.4 T-JET Abarth	203238	12 »	T	S	SM	240.0	40.0	59.0	11.0	9.2	4+2	7663465
BRAVO 1.4 MultiAir / 1.6 Multijet	204397	11 »	T	S	SM	251.0	50.5	59.0	10.0	9	4+2	82433859
BRAVO 1.4 MultiAir / 1.6 Multijet	204404	11 »	D	V	SM	284.0	43.5	59.0	22.0	20.2	4+2	60813038
BRIO	202425	87 »	D	S	SM	227.0	45.3	59.0	10.8	9	4+2	
DUCATO	203562	92 »	D	S	SM	256.0	64.0	73.0	16.0	14.8	5+2+3	9350052100
DUCATO	204048	94 »	D	S	SM	280.0	65.5	73.0	18.0	15.9	5+2	
DUCATO (llanta 15")	206023	97 » 09	T	S	SM	280.0	82.0	72.0	16.0	14.2	5	46833806 - 4246Y97 71740118
DUCATO (llanta 16")	206050	95 » 09	T	S	SM	280.0	82.0	79.0	16.0	14.2	5	46833807 - 4246Z3 4246Z1-134987180
DUCATO 2.5L	205626	98 »	D	V	SM	300.0	65.5	80.0	24.0	22	5+2	
DUCATO 2.8 (llanta 15")	205506	99 »	D	V	SM	280.0	65.5	73.0	24.0	22	5	1300501080
DUCATO 2.3 JTD (llanta 15")	206056	10 » 13	T	S	SM	280.0	80.0	72.0	16.0	14.2	5	424930/31 - 51749274 - 51740245
DUCATO 2.3 JTD (llanta 16")	206057	10 » 13	T	S	SM	280.0	80.0	79.0	16.0	14.2	5	4249K8 - 424940/39
DUCATO MAXI 2.8	205626	98 »	D	V	SM	300.0	65.5	80.0	24.0	22	5+2	
DUCATO MAXI 2.8 TURBO	205626	98 »	D	V	SM	300.0	65.5	80.0	24.0	22	5+2	
DUNA	202440	85 »	D	S	SM	240.0	46.5	59.0	12.0	10.8	4+2	596.1814
FIORINO	201775	83 »	D	S	SM	227.0	45.8	62.0	10.8	9	4+2	438.5812
FIORINO	202425	87 »	D	S	SM	227.0	45.3	59.0	10.8	9	4+2	
FIORINO	202440	85 »	D	S	SM	240.0	46.5	59.0	12.0	10.8	4+2	596.1814
FREEMONT 2.4 16V	206014	12 »	D	V	SM	302.0	38.0	72.5	28.0	26.4	5	K04779783AB
FREEMONT 2.4 16V	206041	12 »	T	S	SM	305.0	33.0	72.5	12.0	10.4	5	
GRAND SIENA 1.4 8V / 1.6 16V	205956	12 »	D	V	SM	257.0	40.5	59.0	22.0	20	4+2	7779409 - 46416712
IDEA 1.4i 16V	202567	05 »	D	V	SM	257.0	40.5	59.0	20.0	18.2	4+2	46416712 - 7645056
IDEA 1.8 ADVENTURE	204404	07 »	D	V	SM	284.0	43.5	59.0	22.0	20.2	4+2	60813038
IDEA 1.8	205956	05 »	D	V	SM	257.0	40.5	59.0	22.0	20	4+2	7779409 - 46416712
IDEA ELX 1.4	202567	05 »	D	V	SM	257.0	40.5	59.0	20.0	18.2	4+2	46416712 - 7645056
LINEA 1.4 16V / 1.8 16V	205956	09 »	D	V	SM	257.0	40.5	59.0	22.0	20	4+2	7779409 - 46416712
LINEA 1.8 16V / 1.9 16V / 1.4 16V T	204397	09 »	T	S	SM	251.0	50.5	59.0	10.0	9	4+2	82433859
LINEA 1.9 16V / 1.4 16V Turbo	204404	09 »	D	V	SM	284.0	43.5	59.0	22.0	20.2	4+2	60813038



DISCOS PARA FRENOS BRAKE ROTORS



Dimensiones/Dimensions (mm)

Min. D

Cant. de
Agujeros
Hole Qty

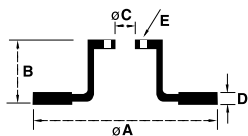
Referencia
Equipo
Original
OEM Part#

D-Del./Front
T-Tras./Rear
S-Sol.
V-Vent.
CM - con Maza
SM - sin Maza

FIAT (Continuación)

Modelo	Código	Volante	Dirigido	Tracción	Material	ø A	B	ø C	D	Min. D	Cant. de Agujeros Hole Qty	Referencia Equipo Original OEM Part#
MAREA 1.6 16V / 1.9 TD	205956	98 »	D	V	SM	257.0	40.5	59.0	22.0	20	4+2	7779409 / 46416712
MAREA 1.8 16V	202567	98 »	D	V	SM	257.0	40.5	59.0	20.0	18.2	4+2	46416712 / 7645056
MAREA 2.0 20V / 2.0 20V T / 2.4 20V	203238	97 »	T	S	SM	240.0	40.0	59.0	11.0	9.2	4+2	7663465
MAREA 2.0 20V / WEEKEND	204404	97 » 00	D	V	SM	284.0	43.5	59.0	22.0	20.2	4+2	60813038
MAREA 2.0 20V T / WEEKEND	205957	00 »	D	V	SM	281.0	43.5	59.0	26.0	24.2	4	46765546
MAREA 2.4 20V / WEEKEND	205957	00 »	D	V	SM	281.0	43.5	59.0	26.0	24.2	4	46765546
PALIO	202440	96 »	D	S	SM	240.0	46.5	59.0	12.0	10.8	4+2	596.1814
PALIO	204065	96 »	D	V	SM	240.0	46.5	59.0	20.0	18.2	4+2	71740120 71738145
PALIO 1.4	204065	06 »	D	V	SM	240.0	46.5	59.0	20.0	18.2	4+2	71740120 71738145
PALIO 1.8	202567	99 »	D	V	SM	257.0	40.5	59.0	20.0	18.2	4+2	46416712 / 7645056
PALIO ADVENTURE 1.8 16V	202567	02 »	D	V	SM	257.0	40.5	59.0	20.0	18.2	4+2	46416712 / 7645056
PALIO ADVENTURE LOCKER	204404	08 »	D	V	SM	284.0	43.5	59.0	22.0	20.2	4+2	60813038
PALIO 1.4 8V / 1.6 16V	205956	11 »	D	V	SM	257.0	40.5	59.0	22.0	20	4+2	7779409 / 46416712
PALIO WEEKEND	202567	99 »	D	V	SM	257.0	40.5	59.0	20.0	18.2	4+2	46416712 / 7645056
PALIO WEEKEND	204065	96 »	D	V	SM	240.0	46.5	59.0	20.0	18.2	4+2	71740120 71738145
PANORAMA	201185	86 » 87	D	S	SM	227.0	45.0	68.0	10.0	9	4+2	420.8311
PREMIO	202440	96 »	D	S	SM	240.0	46.5	59.0	12.0	10.8	4+2	596.1814
PUNTO	202567	07 »	D	V	SM	257.0	40.5	59.0	20.0	18.2	4+2	46416712 / 7645056
PUNTO 1.8	203238	07 »	T	S	SM	240.0	40.0	59.0	11.0	9.2	4+2	7663465
PUNTO 1.7	205956	07 »	D	V	SM	257.0	40.5	59.0	22.0	20	4+2	7779409 / 46416712
PUNTO T-Jet	204397	09 »	T	S	SM	251.0	50.5	59.0	10.0	9	4+2	82433859
QUBO 1.4 8V	205956	11 »	D	V	SM	257.0	40.5	59.0	22.0	20	4+2	7779409 / 46416712
REGATTA	201775	85 » 87	D	S	SM	227.0	45.8	62.0	10.8	9	4+2	438.5812
REGATTA	202425	85 »	D	S	SM	227.0	45.3	59.0	10.8	9	4+2	
REGATTA WEEKEND	202440	85 »	D	S	SM	240.0	46.5	59.0	12.0	10.8	4+2	596.1814
SIENA 1.0 / 1.5	202440	96 »	D	S	SM	240.0	46.5	59.0	12.0	10.8	4+2	596.1814
SIENA 1.6i 16V	202567	97 »	D	V	SM	257.0	40.5	59.0	20.0	18.2	4+2	46416712 / 7645056
SIENA 16V	204065	96 »	D	V	SM	240.0	46.5	59.0	20.0	18.2	4+2	71740120 71738145
SPAZIO	201775	83 »	D	S	SM	227.0	45.8	62.0	10.8	9	4+2	438.5812
SPAZIO	202425	85 »	D	S	SM	227.0	45.3	59.0	10.8	9	4+2	
STILO 1.8 16V (+ABS)	204397	02 »	T	S	SM	251.0	50.5	59.0	10.0	9	4+2	82433859
STILO 1.8 16V (+ABS)	204404	02 »	D	V	SM	284.0	43.5	59.0	22.0	20.2	4+2	60813038
STILO 1.8 8V (+ABS)	204397	02 »	T	S	SM	251.0	50.5	59.0	10.0	9	4+2	82433859
STILO 1.8 8V C/ABS	205956	02 »	D	V	SM	257.0	40.5	59.0	22.0	20	4+2	7779409 / 46416712
STILO 2.4 20V	205957	00 » 08	D	V	SM	281.0	43.5	59.0	26.0	24.2	4	46765546
STRADA 1.4 / 1.3D	202567	06 »	D	V	SM	257.0	40.5	59.0	20.0	18.2	4+2	46416712 / 7645056
STRADA ADVENTURE LOCKER	204404	08 »	D	V	SM	284.0	43.5	59.0	22.0	20.2	4+2	60813038
SUPER EUROPA (DIAM. 59)	202425	85 »	D	S	SM	227.0	45.3	59.0	10.8	9	4+2	
TEMPRA	202567	95 »	D	V	SM	257.0	40.5	59.0	20.0	18.2	4+2	46416712 / 7645056
TEMPRA	204397	92 »	T	S	SM	251.0	50.5	59.0	10.0	9	4+2	82433859
TEMPRA SW	203238	98 »	D	S	SM	240.0	40.0	59.0	11.0	9.2	4+2	7663465
TIPO 1.6 / 2.0	203238	Todos	D / T	S	SM	240.0	40.0	59.0	11.0	9.2	4+2	7663465
TIPO 2.0 16V	202567	95 »	D	V	SM	257.0	40.5	59.0	20.0	18.2	4+2	46416712 / 7645056
UNO	202440	85 »	D	S	SM	240.0	46.5	59.0	12.0	10.8	4+2	596.1814





DISCOS PARA FRENOS BRAKE ROTORS



Dimensiones/Dimensions (mm)

Min. D	B	ø C	D
--------	---	-----	---

Cant. de
Agujeros
Hole Qty
E

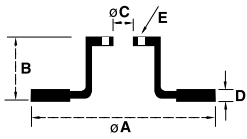
Referencia
Equipo
Original
OEM Part#

FIAT (Continuación)

UNO	204065	96 »	D	V	SM	240.0	46.5	59.0	20.0	18.2	4+2	71740120 71738145
UNO S / CS	201185	86 » 87	D	S	SM	227.0	45.0	68.0	10.0	9	4+2	420.8311
UNO (Attractive - Way - Sporting)	205987	2010 »	D	S	SM	257.5	40.5	59.0	12.0	10.2	4	71738373
UNO TURBO	202567	95 »	D	V	SM	257.0	40.5	59.0	20.0	18.2	4+2	46416712 - 7645056
UNO WAY (VM Con / Sin ABS)	205988	2010 »	D	V	SM	240.0	40.5	59.0	20.0	18.2	4 + 4	46788929
UNO Nuevo Vivace (Con / Sin ABS)	205988	2010 »	D	V	SM	240.0	40.5	59.0	20.0	18.2	4 + 4	46788929

FORD

BERLINA	201503	75 » 83	D	S	SM	228.5	38.4	83.0	10.0	9	6	
BRONCO II 4x4 (c/bulones)	203218	89 » 90	D	V	CM	276.0	63.1	77.7 / 77.7	22.2	20.6	5	
C MAX 1.6 / 1.8 / 2.0 / TDCi	206060	07 »	D	V	SM	278.0	48.5	63.5	25.0	23	5	EV61-1125-AA BV6Z-1125-AA
CORCEL I / II	201503	75 » 83	D	S	SM	228.5	38.4	83.0	10.0	9	6	
CORTINA	201141	74 »	D	S	SM	247.5	27.0	68.3	12.7	11.4	4	74BR-1102-D2
COURIER (ESPESOR 12)	204047	Todos » 02	D	S	SM	239.0	43.3	63.5	12.0	10	4	5022652/653
DEL REY	201503	75 » 83	D	S	SM	228.5	38.4	83.0	10.0	9	6	
ECOSPORT 1.6 16V / 2.0 16V	206047	13 »	D	V	SM	278.0	40.0	63.5	25.0	23	4	CN15-1125-AA
ECOSPORT 1.6 / 2.0 16V 4x2 Manual	204549	03 »	D	V	SM	258.0	43.4	63.5	22.0	20	4	98AB-1125-BE
ECOSPORT AUTOMATICA (Todas)	206051	10/06»12	D	V	SM	278.0	45.0	63.5	25.0	23	4	7N15-1125-AA 4S4Z-1125-AA
ESCORT	205631	96 » 99	T	S	SM	270.0	62.7	63.5	10.0	8.6	4	5025951
ESCORT (BRASIL)	201716	82 » 86	D	V	SM	239.0	58.0	72.0	24.0	22	4+1	83BB-1125-GA
ESCORT / XR3	202130	88 » 94	D	V	SM	239.0	58.0	63.5	24.0	22.8	4+1	87BB-1125-AA
ESCORT 16V	206318	94 »	D	V	SM	239.5	42.8	63.5	20.0	18	4	574.615.301
EXPLORER 4x2 C-S/ABS (c/bulones) cub.ø 60 - ø 45.2	205935	95 »	D	V	CM	286.5	108.2	45.2 / 60.0	26.0	24.5	5	
EXPLORER 4x4	206054	01 » 12	D	V	SM	305.5	66.0	72.0	26.0	24.5	5	3L2Z1125AA
EXPLORER 4x4 C-S/ABS (c/bulones y cubetas)	205636	92 » 95	D	V	CM	276.0	63.4	77.7 / 77.7	22.4	20.6	5	F67A-1102-MA F67Z-1102-MA
EXPLORER 4x4 S/ABS (c/bulones)	203218	91 » 94	D	V	CM	276.0	63.1	77.7 / 77.7	22.2	20.6	5	
F-100 (c/bulones)	201773	84 » 93	D	V	CM	290.0	106.5	45.2 / 65.0	30.0	28	5	85TR-1102-B
F-100 DUTY	206049	00»	T	V	SM	326.0	98.5	127.0	30.0	28	8	F81Z2C026CA XC351102FA
F-100 DUTY 4x2 C-S/ABS (c/bulones M14x1.5 - rosca fina y cubetas)	205981	03 »	D	V	CM	331.0	143.5	62.0 / 73.4	38.0	36	8	3C3Z-1102-BA XC35-1102-FB
F-100 DUTY 4x2 C-S/ABS (c/bulones M14x2 - rosca gruesa y cubetas)	205913	00 » 03	D	V	CM	331.0	143.5	62.0 / 73.4	38.0	36	8	XC35-1102-FA XC35-1102-EA
F-100 RANGER 4x4	203540	82 » 93	D	V	SM	298.0	69.5	98.5	30.0	28	5	
F-1000 (F-100)	202451	8/92»10/98	D	V	SM	286.0	82.0	108.0	30.0	28.5	5	T71615283
F-250	206049	10-98 »	T	V	SM	326.0	98.5	127.0	30.0	28	8	F81Z2C026CA XC351102FA
F-350	206049	99 » 03	T	V	SM	326.0	98.5	127.0	30.0	28	8	F81Z2C026CA XC351102FA
F-4000	205630	96 »	D / T	V	SM	306.0	116.0	152.5	30.0	28.3	6	
F-4000	203239	85 »	D	V	SM	305.0	116.0	152.5	30.0	28.3	8	85TU1102/A
FALCON	200758	69 »	D	S	SM	278.0	60.5	82.5	12.7	11.4	5	BA-D0DZ-1102-C
FARLAINE (6 Cil)	200750	78 »	D	V	SM	278.0	60.5	82.5	22.5	21	5	BA-D00Z-1102-D
FIESTA	206318	94 »	D	V	SM	239.5	42.8	63.5	20.0	18	4	574.615.301
FIESTA (ESPESOR 10)	203440	Todos » 02	D	S	SM	239.0	43.4	63.5	10.0	8	4+1	89FX-1125-AE - 6191062
FIESTA (ESPESOR 12)	204047	Todos » 02	D	S	SM	239.0	43.3	63.5	12.0	10	4	5022652/653
FIESTA II 1.6 8V C/ABS	204549	02 »	D	V	SM	258.0	43.4	63.5	22.0	20	4	98AB-1125-BE



DISCOS PARA FRENOS BRAKE ROTORS

Raybestos®
The best in brakes



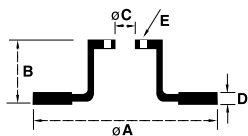
Dimensiones/Dimensions (mm)

Cant. de
Agujeros
Hole Qty
E

Referencia
Equipo
Original
OEM Part#

FORD (Continuación)

						ø A	B	ø C	D	Min. D		
FIESTA KINETIC 1.6 16V	206013	10 »	D	V	SM	258.0	44.0	63.5	23.0	21	4 + 1	8V51-1125-AC / AE8Z-1125-AA
FIESTA S/ABS	206318	02 »	D	V	SM	239.5	42.8	63.5	20.0	18	4	574.615.301
FOCUS	204549	99 »	D	V	SM	258.0	43.4	63.5	22.0	20	4	98AB-1125-BE
FOCUS	204811	99 » 08	T	S	SM	252.5	33.0	63.5	10.2	8.9	4	
FOCUS II 1.6 16V / 2.0 16V / 1.8 TDCI	206060	08 »	D	V	SM	278.0	48.5	63.5	25.0	23	5	3M51-2C375-AD 1734696 / 1320352
FOCUS II 1.6 16V / 2.0 16V / 1.8 TDCI	206012	08 »	T	S	SM	265.0	40.8	63.6	11.0	9	5	3M51-2A315-CA 1724696 - 7M51-2A315-FA
FOCUS III 1.6 16V Sigma TiVCT - 2.0 16V Duratec GDI (T. Manual / Powershift)	206060	13 »	D	V	SM	278.0	48.5	63.5	25.0	23	5	EV61-1125-AA BV6Z-1125-AA
FOCUS III 2.0 16V Duratec GDI (T.Manual / Powershift)	206058	13 »	T	S	SM	271.0	40.8	63.6	11.0	9	5	EV61-2A315-AA BV6Z-2C026-AA
GALAXY (GRANDE)	204044	95 »	D	V	SM	256.0	39.0	65.0	20.0	18	4+1	
GALAXY (CHICO)	202568	Todos	D	V	SM	239.0	38.7	65.0	20.0	18	4+1	3256152891
KA (ESPESOR 10)	203440	Todos » 02	D	S	SM	239.0	43.4	63.5	10.0	8	4+1	89FX-1125-AE - 6191062
KA 1.0	204047	97 »	D	S	SM	239.0	43.3	63.5	12.0	10	4	5022652/653
KA 1.3	206318	02 »	D	V	SM	239.5	42.8	63.5	20.0	18	4	574.615.301
KA 1.6	206318	03 »	D	V	SM	239.5	42.8	63.5	20.0	18	4	574.615.301
MONDEO	204053	94 »	D	V	SM	260.0	47.0	63.5	24.0	22.2	4	5026784
MONDEO	205632	01 »	D	V	SM	300.0	47.2	63.5	24.0	22	5	C2S4566
MONDEO	205633	01 »	T	S	SM	280.0	34.2	63.5	12.0	10	5	1S7W2A315B3E
MONDEO V6	204926	94 »	D	V	SM	278.0	46.8	63.5	24.0	22.2	4	
MONDEO V6 / 2.0 i 16V	204405	Todos	T	V	SM	253.0	43.7	63.5	20.0	18	4	
ORION	206318	94 »	D	V	SM	239.5	42.8	63.5	20.0	18	4	574.615.301
PAMPA L	201503	86 » 89	D	S	SM	228.5	38.4	83.0	10.0	9	6	
RANGER 4x2 (c/bulones y cubetas ø 65 - ø 45.2) + corona ABS	205635	95 »	D	V	CM	286.5	108.2	45.2 / 65.0	26.0	24.5	5	
RANGER 4x2 (c/bulones y cub.ø 60 - ø 45.2)	205935	99 »	D	V	CM	286.5	108.2	45.2 / 60.0	26.0	24.5	5	
RANGER 150 (c/bulones y cubetas)	203297	Todos	D	V	CM	298.0	138.0	45.2 / 59.1	30.0	28	5	
RANGER 4x2 / 4x4	206045	12 »	D	V	SM	302.0	61.0	98.0	32.0	30	6 + 1	AB31-1125-AC
RANGER 4x2 / 4x4	206038	07 » 12	D	V	SM	289.0	70.0	98.0	28.0	26	6	4429562 - 1490412
RANGER 4x2 (c/bulones y cubetas)	205634	95 » 98	D	V	CM	261.0	108.2	45.2 / 65.0	26.0	24.5	5	
RANGER 4x4	205637	98 »	D	V	SM	286.0	66.0	72.0	26.0	24.5	5	F67Z-1125-BA
RANGER 4x4	206054	01 » 12	D	V	SM	305.5	66.0	72.0	26.0	24.5	5	3L2Z1125AA
RANGER 4x4 C-S/ABS (c/bulones y cubetas)	205636	98 »	D	V	CM	276.0	63.4	77.7 / 77.7	22.4	20.6	5	F67A-1102-MA F67Z-1102-MA
ROYALE	202568	Todos	D	V	SM	239.0	38.7	65.0	20.0	18	4+1	3256152891
ROYALE	204044	95 »	D	V	SM	256.0	39.0	65.0	20.0	18	4+1	
SIERRA	201716	82 » 86	D	V	SM	239.0	58.0	72.0	24.0	22	4+1	83BB-1125-GA
SIERRA (copa baja 23 mm)	201996	87 »	D	V	SM	239.0	47.0	72.5	24.0	22.8	4	85BR-1125-A
TAUNUS GT / GTL / Guia	201141	74 »	D	S	SM	247.5	27.0	68.3	12.7	11.4	4	74BR-1102-D2
TRANSIT (llanta 14")	204045	96 »	D	V	SM	254.0	43.0	78.5	24.5	22.2	5	5025610
TRANSIT (llanta 15")	204046	96 »	D	V	SM	270.0	43.0	78.5	24.5	22.2	5	5025611
TRANSIT (llanta 16")	206000	2000 »	D	V	SM	294.0	44.0	82.0	25.0	22.2	5	
TRANSIT 330 / 350 2.4 Tdi	206020	09 »	D	V	SM	300.0	54.5	93.0	28.0	24	5	6C11 1125 AB
TRANSIT 330 / 350 2.4 Tdi	206021	09 »	T	S	SM	280.0	16.5	107.5	16.0	13	10	6C11 2A315 AB
VERSAILLES	202568	Todos	D	V	SM	239.0	38.7	65.0	20.0	18	4+1	3256152891
VERSAILLES	204044	95 »	D	V	SM	256.0	39.0	65.0	20.0	18	4+1	



DISCOS PARA FRENOS BRAKE ROTORS



D-Del./Front
T-Tras./Rear
S-Sol. CM - con Maza
V-Vent. SM - sin Maza

Dimensiones/Dimensions (mm)

Min. D	B	øC	D
--------	---	----	---

Cant. de
Agujeros
Hole Qty
E

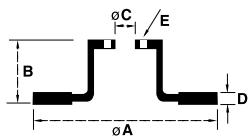
Referencia
Equipo
Original
OEM Part#

FSO

POLONEZ	201775	77 »	D	S	SM	227.0	45.8	62.0	10.8	9	4+2	
---------	--------	------	---	---	----	-------	------	------	------	---	-----	--

GENERAL MOTORS

AGILE 1.4 8V	203242	2009 »	D	V	SM	236.0	41.0	60.0	20.0	18.3	4+2+1	90121445
ASTRA	203557	Todos	D	S	SM	236.0	41.2	60.0	12.7	9.7	4+2+1	90111242
ASTRA	205639	99 »	T	S	SM	240.0	42.0	57.0	10.0	8	4	9196587 - 90498304
ASTRA	205640	99 »	T	S	SM	264.0	42.0	65.5	10.0	8	5 + 1	9117772 - 569109
ASTRA	205641	96 »	D	V	SM	256.0	41.0	60.0	20.0	17	4+2+1	90511128
ASTRA 1.8	204403	94 » 98	D	V	SM	256.0	41.0	60.0	24.0	21.4	4+2+1	7700704705
ASTRA 1.8 8V LTA (llanta 14")	205960	99 »	D	V	SM	256.0	41.0	60.0	24.0	22	4	
ASTRA 1.8i / 2.0i	205642	99 »	D	V	SM	280.0	42.0	70.0	25.0	22	5	
ASTRA 2.0 16V	205642	99 »	D	V	SM	280.0	42.0	70.0	25.0	22	5	
ASTRA 2.0 8V (llanta 15")	205968	2005 »	D	V	SM	280.0	42.0	60.0	25.0	23	4	
ASTRA 2.0 8V LTA (llanta 14")	205960	99 »	D	V	SM	256.0	41.0	60.0	24.0	22	4	
ASTRA 2.0 8V LTA (llanta 15")	205960	02 »	D	V	SM	256.0	41.0	60.0	24.0	22	4	
ASTRA GLS / GL 1.8 8V / 2.0 8V	205809	98 »	T	S	SM	260.0	69.2	57.0	10.0	8	4 + 1	
AVEO 1.6 16V	206016	08 »	D	V	SM	256.0	41.0	59.0	24.0	22	4+2+2	96471275
BLAZER 4x2 (c/bulones)	204925	95 » 97	D	V	CM	276.0	87.5	49.9 / 59.0	30.0	28	6	
BLAZER 4x2 (c/bulones)	204924	97 » 12	D	V	CM	276.0	87.3	49.9 / 59.0	30.0	28.5	5	93364073 93249826
BLAZER 4x4	205638	98 » 12	D	V	SM	274.0	54.5	71.0	29.0	27.5	5	
C 10 (c/bulones)	202557	Todos	D	V	CM	299.0	117.5	50.0 / 59.0	27.5	26	5	14.008.647
C 20	203240	95 »	D	V	SM	283.5	61.5	97.0	30.0	28.5	6	9298602
CAPTIVA 2.4 / 3.6	205989	2008 »	D	V	SM	296.0	52.0	70.7	29.0	27.4	5	4808848 96625948
CAPTIVA 2.4 / 3.6	205990	2008 »	T	V	SM	303.0	72.0	70.7	20.0	18.4	5	4804637 96625873
CHEVETTE (c/bulones)	202558	79 »	D	S	CM	238.0	94.039.85 / 50.27	11.0		9	4	94607738
CHEVY	200585	69 »	D	S	SM	278.0	54.0	78.0	12.8	11.5	5	2.788.609
COBALT 1.4 / 1.8 / 1.3TD (C/ABS)	206036	12 »	D	V	SM	256.0	45.0	60.0	24.0	21	4	13502001
COBALT 1.4 / 1.8 / 1.3TD (S/ABS)	206037	12 »	D	V	SM	240.0	43.0	60.0	20.0	18	4	94731378
CORSA	203242	95 »	D	V	SM	236.0	41.0	60.0	20.0	18.3	4+2+1	90121445
CORSA	203557	Todos	D	S	SM	236.0	41.2	60.0	12.7	9.7	4+2+1	90111242
CORSA 1.6	203242	Todos	D	V	SM	236.0	41.0	60.0	20.0	18.3	4+2+1	90121445
CORSA GSI 1.6 16V	205641	93 » 96	D	V	SM	256.0	41.0	60.0	20.0	17	4+2+1	90511128
CORSA II 1.8 8V / MERIVA 1.8 8V	205851	01 »	D	V	SM	260.0	41.0	60.0	24.0	21	4+2+1	9127967
CRUZE 1.8 / 2.0 CDI (163CV)	206062	13 »	D	V	SM	300.0	45.5	70.7	26.0	23	5	13502052 - 13502059 - 569070
CRUZE 1.8 / 2.0 CDI (163CV)	206063	13 »	T	S	SM	292.0	45.0	70.7	12.0	10	5	13502138 - 13502139 - 569071
CRUZE 1.8 16V	206033	11 »	D	V	SM	276.0	45.5	60.0	26.0	23	5	13502045 - 13502044
CRUZE 1.8 16V	206034	11 »	T	S	SM	268.0	45.0	60.0	12.0	10	5	13502136 - 13502135
D 10	203240	95 »	D	V	SM	283.5	61.5	97.0	30.0	28.5	6	9298602
D 20	203240	95 »	D	V	SM	283.5	61.5	97.0	30.0	28.5	6	9298602
D 40	203241	Todos	D	V	SM	310.0	165.0	125.0	34.0	32	8	94631004
IPANEMA	203242	Todos	D	V	SM	236.0	41.0	60.0	20.0	18.3	4+2+1	90121445
KADDET	203242	Todos	D	V	SM	236.0	41.0	60.0	20.0	18.3	4+2+1	90121445
LUV Pick-up	203302	Todos	D	V	SM	257.0	36.0	88.0	22.0	20.6	6	
MERIVA	204403	02 »	D	V	SM	256.0	41.0	60.0	24.0	21.4	4+2+1	7700704705
MERIVA 1.8 16V	205854	03 »	D	V	SM	280.0	42.0	60.0	25.0	23	4	93300160



DISCOS PARA FRENOS BRAKE ROTORS



Dimensiones/Dimensions (mm)

Min. D

Cant. de
Agujeros
Hole Qty

Referencia
Equipo
Original
OEM Part#

D-Del./Front
T-Tras./Rear
S-Sol.
CM - con Maza
V-Vent.
SM - sin Maza
ø A
B
ø C
D
Min. D
Cant. de Agujeros Hole Qty
Referencia Equipo Original OEM Part#

GENERAL MOTORS (Continuación)

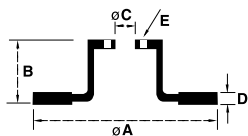
MERIVA 1.7 DTI	205640	03 »	T	S	SM	264.0	42.0	65.5	10.0	8	5 + 1	9117772 - 569109
MONZA	203242	Todos	D	V	SM	236.0	41.0	60.0	20.0	18.3	4+2+1	90121445
ONIX 1.0 / 1.4	206037	13 »	D	V	SM	240.0	43.0	60.0	20.0	18	4	94731378
PRISMA 1.0 / 1.4	206037	13 »	D	V	SM	240.0	43.0	60.0	20.0	18	4	94731378
S 10 (c/bulones) (BRASIL)	204925	95 » 97	D	V	CM	276.0	87.5	49.9 / 59.0	30.0	28	6	
S 10 4x2 C-S/ABS (c/bulones) (BRASIL)	204924	97 » 12	D	V	CM	276.0	87.3	49.9 / 59.0	30.0	28.5	5	93364073 93249826
S10 4x4 (C/S ABS)	205638	98 » 12	D	V	SM	274.0	54.5	71.0	29.0	27.5	5	
S10 NM 4x2 / 4x4 C-S/ABS	206035	12 »	D	V	SM	300.0	40.0	88.0	27.0	25	6	94712571
SILVERADO (BRASIL)	203240	95 »	D	V	SM	283.5	61.5	97.0	30.0	28.5	6	9298602
SILVERADO (V) (c/bulones)	202557	Todos	D	V	CM	299.0	117.5	50.0 / 59.0	27.5	26	5	14.008.647
SONIC 1.6 16V	206036	12 »	D	V	SM	256.0	45.0	60.0	24.0	21	4	13502001
SPIN 1.8 / 1.3 TD	206036	12 »	D	V	SM	256.0	45.0	60.0	24.0	21	4	13502001
TRACKER 1.8 16V 4x2 / 4x4	206062	13 »	D	V	SM	300.0	45.5	70.7	26.0	23	5	13502052 - 13502059 - 569070
TRACKER 1.8 16V 4x4	206034	11 »	T	S	SM	268.0	45.0	60.0	12.0	10	5	13502136 - 13502135
TRAILBLAZER 2.8 / 3.6	206035	13 »	D	V	SM	300.0	40.0	88.0	27.0	25	6	94712571
VECTRA 1.8i / 2.0i	205641	96 »	D	V	SM	256.0	41.0	60.0	20.0	17	4+2+1	90511128
VECTRA 2.0 / 2.2 8V	205960	99 » 11	D	V	SM	256.0	41.0	60.0	24.0	22	4	
VECTRA 2.0 8V / GT	205968	05 » 11	D	V	SM	280.0	42.0	60.0	25.0	23	4	
VECTRA 2.4	204553	06 »	T	S	SM	286.0	69.2	65.5	10.0	8	5	5084751 - 4565693 - 9051290
VECTRA 2.0 / 2.0 16V	204403	94 » 96	D	V	SM	256.0	41.0	60.0	24.0	21.4	4+2+1	7700704705
VECTRA 2.0 / 2.5 / 2.0i 16V	204552	96 »	D	V	SM	288.0	42.0	70.0	25.0	21	5+2+1	
VECTRA 2.0 / 2.5 / 2.0i 16V	204553	95 »	T	S	SM	286.0	69.2	65.5	10.0	8	5	5084751 - 4565693 - 9051290
VECTRA 2.4	204552	06 » 01	D	V	SM	288.0	42.0	70.0	25.0	21	5+2+1	
VECTRA GLS / CD / Gsi	205809	94 » 96	T	S	SM	260.0	69.2	57.0	10.0	8	4 + 1	
VERANEIO	203240	95 »	D	V	SM	283.5	61.5	97.0	30.0	28.5	6	9298602
ZAFIRA	205640	99 »	T	S	SM	264.0	42.0	65.5	10.0	8	5 + 1	9117772 - 569109
ZAFIRA 2.0 16V	204553	01 »	T	S	SM	286.0	69.2	65.5	10.0	8	5	5084751 - 4565693 - 9051290
ZAFIRA 2.0 16V	205642	01 »	D	V	SM	280.0	42.0	70.0	25.0	22	5	

GROSSPAL

GROSSPAL	202022	79 »	D	S	SM	313.0	34.5	126.0	14.0	13	8	
----------	---------------	------	---	---	----	-------	------	-------	------	----	---	--

HONDA

ACCORD	201963	81 » 86	D	S	SM	230.0	42.0	85.0	12.0	11	4	45251-671-670
ACCORD 1.8 16V / 2.0 16V (14")	205969	90 » 93	D	V	SM	260.0	34.0	92.0	23.0	21	4	
ACCORD 2.2i 16V	205643	91 »	D	V	SM	282.0	34.0	92.0	23.0	21	4	45251SN7E50 45251SM4G02 45251SM4G01
CITY 1.5 16V	203225	09 »	D	V	SM	262.0	45.0	64.2	21.0	19	4+2+2	45251SK7A00
CITY 1.5 16V EXL	205986	09 »	T	S	SM	238.0	48.0	61.0	9.0	8	4	42510SR3J00/R3000
CIVIC 1.5 16V / 1.6 16V	205969	95 »	D	V	SM	260.0	34.0	92.0	23.0	21	4	
CIVIC 1.5 LX	203225	93 » 95	D	V	SM	262.0	45.0	64.2	21.0	19	4+2+2	45251SK7A00
CIVIC 1.6 16V VTEC (C/ABS)	203225	95 » 06	D	V	SM	262.0	45.0	64.2	21.0	19	4+2+2	45251SK7A00
CIVIC 1.6 EX / LX	203225	91 » 00	D	V	SM	262.0	45.0	64.2	21.0	19	4+2+2	45251SK7A00
CIVIC 1.3 / 1.5i / 1.6i	203226	90 » 98	D	V	SM	240.0	45.0	61.0	21.0	19	4+4	
CIVIC 1.6 16V / VTEC	205986	91 » 95	T	S	SM	238.0	48.0	61.0	9.0	8	4	42510SR3J00/R3000
CIVIC 1.6 16V / VTEC / CVT ES	205986	96 »	T	S	SM	238.0	48.0	61.0	9.0	8	4	42510SR3J00/R3000
CIVIC EX 1300 / 1500 / 1600	203224	89 » 96	D	S	SM	231.0	44.0	61.0	12.0	10	4	42125006
CIVIC SEDAN DX / LX (S/ABS)	203225	98 » 06	D	V	SM	262.0	45.0	64.2	21.0	19	4+2+2	45251SK7A00



DISCOS PARA FRENOS BRAKE ROTORS



Dimensiones/Dimensions (mm)

Min. D	B	øC	D
--------	---	----	---

Cant. de Agujeros Hole Qty E

Referencia Equipo Original OEM Part#

HONDA (Continuación)

Modelo	Código	Año	Del.	Tras.	SM	øA	B	øC	D	Min. D	Cant. de Agujeros Hole Qty E	Referencia Equipo Original OEM Part#
CIVIC SEDAN EX / LX (C/ABS)	203225	98 » 06	D	V	SM	262.0	45.0	64.2	21.0	19	4+2+2	45251SK7A00
CR-V 2.0i 16V	206004	02 »	D	V	SM	282.0	47.5	64.2	23.0	21	5	45251S87A00
CR-V 2.2 CD Ti	206004	04 »	D	V	SM	282.0	47.5	64.2	23.0	21	5	45251S87A00
CR-V 2.4 i-VTEC	206005	06 »	D	V	SM	296.0	47.5	64.0	28.0	26	5	45251STKA00
CR-V 2.4 i-VTEC	206006	06 »	T	S	SM	305.0	61.0	64.0	9.0	7.5	5	42510S9AN00
CRX COUPE	203226		D	V	SM	240.0	45.0	61.0	21.0	19	4+4	
FIT (Todos)	205986	09 »	T	S	SM	238.0	48.0	61.0	9.0	8	4	42510SR3J00/R3000
FIT 1.4 / 1.5 8V	205850	02 » 08	D	V	SM	240.0	39.0	61.0	21.0	19	4+2+2	FTC902
FIT 1.4 8V / 1.5 16V	203225	09 »	D	V	SM	262.0	45.0	64.2	21.0	19	4+2+2	45251SK7A00
NEW CIVIC 1.8 16V	205966	06 »	D	V	SM	262.0	47.0	64.0	21.0	19	5	
NEW CIVIC 1.8 16V	205967	06 »	T	S	SM	260.0	42.5	64.0	9.0	8	5	42510SNLT00
PASSPORT	203236	12/95 »	D	V	SM	280.0	36.0	88.0	26.0	24	6+3	8-97034-035-3
PASSPORT	203302	94 » 11/95	D	V	SM	257.0	36.0	88.0	22.0	20.6	6	8-94361-927-0/1
STREAM 1.7i 16V / 2.0i 16V	206004	01 »	D	V	SM	282.0	47.5	64.2	23.0	21	5	45251S87A00
WAGOVAN	203226		D	V	SM	240.0	45.0	61.0	21.0	19	4+4	

HYUNDAI

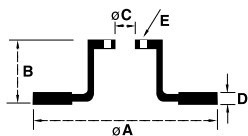
ACCENT	204551	89 »	D	V	SM	242.0	40.5	86.0	19.0	17.7	4	
ATOS	205645	01 »	D	V	SM	235.0	51.0	63.5	18.0	16	4	5171202550 - 5171202551
ATOS	205646	98 » 00	D	S	SM	230.0	43.7	67.4	11.0	9.4	4+2	5171202110/2100/2000
ELANTRA 2.0 16V	206082	01 » 06	D	V	SM	257.0	46.5	69.0	24.0	22.4	4	581012D300 517122D310/D300
EXCEL	204551	89 »	D	V	SM	242.0	40.5	86.0	19.0	17.7	4	
H1 2.5 TD	205999	2003 »	D	V	SM	274.0	44.0	87.0	26.0	24	5	517124F000
H-100	205644	95 »	D	V	SM	253.0	28.8	84.0	20.0	18.4	5	
i30 2.0 16V	206030	08 » 11	D	V	SM	280.0	47.0	69.0	26.0	24.4	5	517123K050 - 517122C000
SANTA FÉ	205879	01 »	D	V	SM	276.0	47.0	69.0	26.0	24.4	5+2	
SANTA FÉ 2.4 / 2.7 / 3.5	206032	01 » 05	T	S	SM	284.0	61.0	76.0	10.0	8.4	5	584113A000 - 584113A300
SANTA FÉ 2.7	205992	2004 »	D	V	SM	298.0	49.0	69.0	28.0	26	5	517122B000
SONATA	206031	06 »	T	S	SM	262.0	61.0	76.0	10.0	8.4	5	5841139600 - 5841139300
SONATA 2.0 16V	206082	02 » 03	D	V	SM	257.0	46.5	69.0	24.0	22.4	4	581012D300 - 517122D310/D300
TUCSON 2.0	206031	05 »	T	S	SM	262.0	61.0	76.0	10.0	8.4	5	5841139600 - 5841139300
TUCSON 2.0 / 2.7	206030	05 »	D	V	SM	280.0	47.0	69.0	26.0	24.4	5	517123K050 - 517122C000
TUCSON 2.7	206032	05 »	T	S	SM	284.0	61.0	76.0	10.0	8.4	5	584113A000 - 584113A300

ISUZU

D MAX 2.5TD / 4x4	206035	11 »	D	V	SM	300.0	40.0	88.0	27.0	25	6	94712571
TROOPER Pick-up 4x2 / 4x4	203302	87 » 92	D	V	SM	257.0	36.0	88.0	22.0	20.6	6	
TRUCK AMIGO	203302	91 »	D	V	SM	257.0	36.0	88.0	22.0	20.6	6	
TRUCK RODEO (6 Cil.)	203236	93 »	D	V	SM	280.0	36.0	88.0	26.0	24	6+3	8-97034-035-3
TRUCK RODEO (6 Cil.)	203302	91 »	D	V	SM	257.0	36.0	88.0	22.0	20.6	6	
TRUCK TROOPER	203236	92 »	D	V	SM	280.0	36.0	88.0	26.0	24	6+3	8-97034-035-3
TRUCK TROOPER	203302	88 » 94	D	V	SM	257.0	36.0	88.0	22.0	20.6	6	8-94361-927

IVECO

DAILY 35S14	205995	2007 »	D	V	SM	290.0	46.0	64.0	28.0	25	9	504121612 / 2996121
DAILY 40S16	205995	2007 »	D	V	SM	290.0	46.0	64.0	28.0	25	9	504121612 / 2996121
DAILY 45S14	205995	2007 »	D	V	SM	290.0	46.0	64.0	28.0	25	9	504121612 / 2996121
DAILY 4910	204836	97 »	D	S	SM	280.0	142.0	58.0	16.0	14	6+6+3	
DAILY 55C16	205995	2007 »	D	V	SM	290.0	46.0	64.0	28.0	25	9	504121612 / 2996121



DISCOS PARA FRENOS BRAKE ROTORS



Dimensiones/Dimensions (mm)

	ø A	B	ø C	D	Min. D	Cant. de Agujeros Hole Qty E	Referencia Equipo Original OEM Part#
--	-----	---	-----	---	--------	------------------------------	--------------------------------------

IVECO (Continuación)

DAILY 60-12 / 70-12 / 70-13	205948	2004 »	T	S	SM	306.0	136.5	154.0	22.0	18	6	424.71.150
DAILY III (Todos)	205948	2007 »	T	S	SM	306.0	136.5	154.0	22.0	18	6	424.71.150
DAILY TURBO	204548	96 »	D	V	SM	290.0	161.0	120.0	25.0	22	6+6	1904693
NEW DAILY	204835	97 »	D	S	SM	290.0	110.5	68.0	22.0	19	6	
NEW DAILY	204935	99 »	T	S	SM	290.0	84.5	84.0	22.0	19	8	7180256

KIA

BESTA 2.2	205965	93 » 99	D	V	SM	256.0	20.0	86.0	20.0	18.0	6	
CARNIVAL 2.5 V6 / 2.9 TDI	205964	98 » 01	D	V	SM	274.0	47.5	72.0	24.0	22	5	
CARNIVAL 2.5 V6 / 2.9 TDI / 2.9 CRDi	205884	98 »	D	V	SM	274.0	49.0	72.0	26.0	24	5	
CERATO 1.6 16V	206082	06 » 12	D	V	SM	257.0	46.5	69.0	24.0	22.4	4	581012D300 517122D310/D300
MAGENTIS	206031	06 »	T	S	SM	262.0	61.0	76.0	10.0	8.4	5	5841139600
MAGENTIS 2.0 / 2.7	206030	05 »	D	V	SM	280.0	47.0	69.0	26.0	24.4	5	517121F300
PRIDE	205650	91 »	D	S	SM	219.0	37.0	75.0	13.0	11	4	DA0133251
SORENTO 4x4	205993	2003 »	D	V	SM	302.0	54.0	96.5	28.0	26	5	51712E300 / 517123E000
SOUL 1.6 16V	206030	09 »	D	V	SM	280.0	47.0	69.0	26.0	24.4	5	517121F300
SPORTAGE 2.0 16V / 4x2	206031	04 »	T	S	SM	262.0	61.0	76.0	10.0	8.4	5	5841139600
SPORTAGE 2.0i 16V 2WD / 4WD	205649	94 » 03	D	V	SM	284.0	51.0	96.5	24.0	22.4	5	OK01A3325XB OK011325XC OK71E33252
SPORTAGE 4x2 / 4x4	206030	04 » 10	D	V	SM	280.0	47.0	69.0	26.0	24.4	5	517121F300
SPORTAGE 4x4	206032	04 »	T	S	SM	284.0	61.0	76.0	10.0	8.4	5	584113A300

LAND ROVER

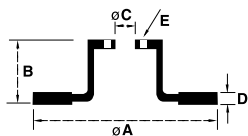
DISCOVERY	205652	94 »	D	V	SM	298.0	70.0	101.6	24.0	22	5	
-----------	---------------	------	---	---	----	-------	------	-------	------	----	---	--

MAZDA

626 SW 2.0 16V DiTD	205964	98 » 02	D	V	SM	274.0	47.5	72.0	24.0	22	5	
B2600 4x4 / BT50 4x2 / BT50 4x4	206038	07 »	D	V	SM	289.0	70.0	98.0	28.0	26	6	UM5133251 - UR6133251
NAVAJO PICK UP 4x4 (c/bulones)	203218	91 » 92	D	V	CM	276.0	63.1	77.7 / 77.7	22.2	20.6	5	
PICK UP 2WD	205965	85 » 98	D	V	SM	256.0	20.0	86.0	20.0	18.0	6	

MERCEDES BENZ

180 D (VAN / FURGON)	203303	Todos	D	V	SM	263.0	82.0	102.0	24.0	22	5	
913	203246	Todos	D	S	SM	324.0	91.0	118.0	30.0	27	6	670.4210012
300 SL	203768	Todos	D	V	SM	300.0	48.0	67.0	28.0	26	5+2+1	
609 / 709 / 710 / 711	203245	Todos	D	V	SM	304.0	91.0	118.0	30.0	28	6	669.4210112
914C	204928	98 »	T	V	SM	312.0	116.0	157.0	34.0	31	6	6884230012
1935	204930	99 »	D / T	V	SM	430.0	132.0	211.0	45.0	37	10	9424212112 - 9424211212
1938 L / LS - 1944 L / LS	204930	99 »	D / T	V	SM	430.0	132.0	211.0	45.0	37	10	9424212112 - 9424211212
AXOR 1933 / 2035 / 2040 / 2044 / 2533 2540 / 2544 / 2640 / 2644 / 2826 / 3340	204930	99 »	D / T	V	SM	430.0	132.0	211.0	45.0	37	10	9424212112 - 9424211212
C180 KOMPRESSOR	206079	07 »	T	S	SM	300.0	57.5	67.0	10.0	8.3	5 + 1	2044230612 - A2044231512
C180 KOMPRESSOR (Alta Perf.)	206094	07 »	D	V	SM	295.0	64.5	67.0	28.0	26.4	5 + 1	2044210912/2712/812 2044210712 - 2044212512 - 2124211312
C200 KOMPRESSOR	206078	07 »	D	V	SM	295.0	64.5	67.0	28.0	25.4	5 + 1	2044230612 - A2044231512 2044210912 - 2044212712 - 2044212812
C200 KOMPRESSOR	206079	07 »	T	S	SM	300.0	57.5	67.0	10.0	8.3	5 + 1	2044230612 - A2044231512 2044210912 - 2044212712 - 2044212812
C200 KOMPRESSOR (Alta Perf.)	206094	07 »	D	V	SM	295.0	64.5	67.0	28.0	26.4	5 + 1	2044212712 - 2044212812
C220 / C230 / C250 (W204)	206079	07 »	T	S	SM	300.0	57.5	67.0	10.0	8.3	5 + 1	2044230612 - A2044231512



DISCOS PARA FRENOS BRAKE ROTORS



Dimensiones/Dimensions (mm)

Min. D

Cant. de
Agujeros
Hole Qty

E

Referencia
Equipo
Original
OEM Part#

19XX

20XX

21XX

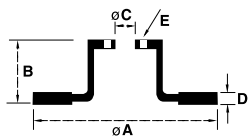
22XX

D-Del./Front
T-Tras./Rear
S-Sol. CM - con Maza
V-Vent. SM - sin Maza

MERCEDES BENZ (Continuación)

Modelo	Código	Año	Del.	Tras.	SM	A	B	C	D	Min. D	Cant. de Agujeros	Referencia Original
C220 / C230 / C250 / C280 (W204) (Alta Performance)	206094	07 »	D	V	SM	295.0	64.5	67.0	28.0	26.4	5 + 1	2044210912/2712 2044212812
C220 / C230 / C250 / C280 (W204)	206078	07 »	D	V	SM	295.0	64.5	67.0	28.0	25.4	5 + 1	2044210712/2512 2124211312
C200/ C220/ C230/ C250/ C280 (W204)	206078	07 »	D	V	SM	295.0	64.5	67.0	28.0	25.4	5 + 1	2044210712 2044212512 2124211312
C220 / C230 / C250 (W204)	206079	07 »	T	S	SM	300.0	57.5	67.0	10.0	8.3	5 + 1	2044230612 - A2044231512 2044210912
C300 (Alta Performance)	206094	07 »	D	V	SM	295.0	64.5	67.0	28.0	26.4	5 + 1	2044212712 2044212812
C300 (W204)	206078	09 »	D	V	SM	295.0	64.5	67.0	28.0	25.4	5 + 1	2044210712 2044212512 2124211312
C300 (W204)	206079	08 »	T	S	SM	300.0	57.5	67.0	10.0	8.3	5 + 1	2044230612 - A2044231512
CAMION (ELECTRONICO) 712C	204927	98 »	D	V	SM	312.0	82.0	118.0	34.0	31	6	6884210012
CAMION (ELECTRONICO) 712C	204928	98 »	T	V	SM	312.0	116.0	157.0	34.0	31	6	6884230012
CLASE A-160 / A-190	205653	97 »	D	V	SM	260.0	40.5	67.0	22.0	19.4	5 + 1	1684210212 2044210712
E200/ E220/ E250 (W212)	206078	09 »	D	V	SM	295.0	64.5	67.0	28.0	25.4	5 + 1	2044212512 2124211312 2044210712
E250 (W211)	206078	02 » 09	D	V	SM	295.0	64.5	67.0	28.0	25.4	5 + 1	2044212512 2124211312
LO914	204927	98 »	D	V	SM	312.0	82.0	118.0	34.0	31	6	6884210012
LO914	204928	98 »	T	V	SM	312.0	116.0	157.0	34.0	31	6	6884230012
715 ACCELO	206022	03 »	D	V	SM	323.0	110.5	138.0	30.0	28.5	6	9794210012
715 ACCELO	206043	Todos	T	V	SM	324.0	102.0	116.0	30.0	28	8	9054230212
915C ACCELO	205973	Todos	D	V	SM	335.0	114.0	138.0	34.0	28	6	
915C ACCELO	205974	Todos	T	V	SM	335.0	111.0	152.0	34.0	31	8	
VITO	205664	96 »	D	V	SM	276.0	60.0	67.0	22.0	19	5	
VITO	205665	96 »	T	S	SM	280.0	63.2	67.0	10.0	8	5	
O-500 U / O-500UA	204930	99 »	D / T	V	SM	430.0	132.0	211.0	45.0	37	10	9424212112 / 9424211212
OH 1718 / ACTROS / ATEGO	204930	99 »	D / T	V	SM	430.0	132.0	211.0	45.0	37	10	9424212112 / 9424211212
OH 1115	205845	98 »	D	V	SM	377.0	112.0	117.0	45.0	39	10	
SLK 200 / 250 - R172	206078	11 »	D	V	SM	295.0	64.5	67.0	28.0	25.4	5 + 1	2044210712 2044212512 2124211312
SPRINTER (con aguj. fresado)	204837	95 »	D	V	SM	276.0	78.0	85.0	22.0	19	5+1	
SPRINTER 310D (con aguj. fresado)	204837	97 » 99	D	V	SM	276.0	78.0	85.0	22.0	19	5+1	
SPRINTER 310D (con aguj. fresado)	204929	97 » 99	T	S	SM	272.0	97.0	85.0	16.0	14	5	
SPRINTER 310D (con aguj. avellanado)	205949	02 »	D	V	SM	276.0	78.0	85.0	22.0	19	5+1	9214210612
SPRINTER 310D (con aguj. avellanado)	205950	02 »	T	S	SM	272.0	97.0	85.0	16.0	14	5	
SPRINTER 311CDI (con aguj. fresado)	204837	95 » 01	D	V	SM	276.0	78.0	85.0	22.0	19	5+1	
SPRINTER 311CDI (con aguj. fresado)	204929	» 02	T	S	SM	272.0	97.0	85.0	16.0	14	5	
SPRINTER 311CDI (con aguj. avellanado)	205949	02 »	D	V	SM	276.0	78.0	85.0	22.0	19	5+1	9214210612
SPRINTER 311CDI (con aguj. avellanado)	205950	02 »	T	S	SM	272.0	97.0	85.0	16.0	14	5	
SPRINTER 312D (con aguj. fresado)	204837	97 » 02	D	V	SM	276.0	78.0	85.0	22.0	19	5+1	
SPRINTER 312D (con aguj. fresado)	204929	97 » 02	T	S	SM	272.0	97.0	85.0	16.0	14	5	
SPRINTER 312D (con aguj. avellanado)	205949	02 »	D	V	SM	276.0	78.0	85.0	22.0	19	5+1	9214210612
SPRINTER 312D (con aguj. avellanado)	205950	02 »	T	S	SM	272.0	97.0	85.0	16.0	14	5	
SPRINTER 313CDI (con aguj. fresado)	204837	95 » 01	D	V	SM	276.0	78.0	85.0	22.0	19	5+1	





DISCOS PARA FRENOS BRAKE ROTORS



Dimensiones/Dimensions (mm)

Min. D	ø A	B	ø C	D
--------	-----	---	-----	---

Cant. de
Agujeros
Hole Qty
E

Referencia
Equipo
Original
OEM Part#

MERCEDES BENZ (Continuación)

SPRINTER 313CDI (con aguj. fresado)	204929	» 02	T	S	SM	272.0	97.0	85.0	16.0	14	5	
SPRINTER 313CDI	205914	02 »	T	V	SM	285.0	93.0	120.0	22.0	19	6	9044230312
SPRINTER 313CDI (con aguj. avellanado)	205949	02 »	D	V	SM	276.0	78.0	85.0	22.0	19	5+1	9214210612
SPRINTER 313CDI (con aguj. avellanado)	205950	02 »	T	S	SM	272.0	97.0	85.0	16.0	14	5	
SPRINTER 412D (con aguj. fresado)	204837	99 » 02	D	V	SM	276.0	78.0	85.0	22.0	19	5+1	
SPRINTER 412D (con aguj. fresado)	204929	99 » 02	T	S	SM	272.0	97.0	85.0	16.0	14	5	
SPRINTER 412D	205914	02 »	T	V	SM	285.0	93.0	120.0	22.0	19	6	9044230312
SPRINTER 412D (con aguj. avellanado)	205949	02 »	D	V	SM	276.0	78.0	85.0	22.0	19	5+1	9214210612
SPRINTER 412D (con aguj. avellanado)	205950	02 »	T	S	SM	272.0	97.0	85.0	16.0	14	5	
SPRINTER 413CDI (con aguj. fresado)	204837	95 » 01	D	V	SM	276.0	78.0	85.0	22.0	19	5+1	
SPRINTER 413CDI (con aguj. fresado)	204929	» 02	T	S	SM	272.0	97.0	85.0	16.0	14	5	
SPRINTER 413CDI	205914	02 »	T	V	SM	285.0	93.0	120.0	22.0	19	6	9044230312
SPRINTER 413CDI (con aguj. avellanado)	205949	02 »	D	V	SM	276.0	78.0	85.0	22.0	19	5+1	9214210612
SPRINTER 413CDI (con aguj. avellanado)	205950	02 »	T	S	SM	272.0	97.0	85.0	16.0	14	5	
SPRINTER SERIES 310 / 311 / 313 / 413 / 415	206069	06 »	T	S	SM	298.0	71.5	85.0	16.0	14	6 + 1	9064230312
SPRINTER SERIES 310 / 311 / 313 / 413 / 415 / 515	206068	06 »	D	V	SM	300.0	68.5	85.0	28.0	25	6 + 1	9064210012
SPRINTER SERIES 413 / 415 / 515	206070	06 »	T	V	SM	303.0	93.0	120.0	28.0	25	6	2E0615601

MINI COOPER

MINI COOPER 1.6 16V (66-85-93-120-125-147Kw)	205898	02 »	D	V	SM	276.0	44.0	64.1	22.0	20.4	4 + 1	3411 1 502 891
MINI COOPER 1.6 16V (66-85-93-120-125-147Kw)	205899	09/01 »	T	S	SM	259.0	44.0	64.1	10.0	8.4	4 + 1	
MINI ONE 1.4 16V / 1.6 16V / 1.4D	205898	02 »	D	V	SM	276.0	44.0	64.1	22.0	20.4	4 + 1	3411 1 502 891

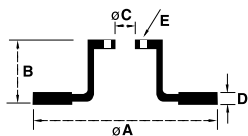
MITSUBISHI

COLT 1.8	205670	92 » 96	D	V	SM	236.0	45.0	64.0	18.0	16.4	4+2	MR449769 - 699283
GALANT	205695	97 »	D	V	SM	256.0	45.0	69.0	24.0	22	4	
L200	205666	87 »	D	V	SM	258.5	33.5	84.0	22.0	20.4	6	
L200 4WD	205961	92 » 02	D	V	SM	277.0	45.0	87.0	22.0	20.4	6	
L200 GLS / HPE 2.5 TDI (16")	205970	2003 »	D	V	SM	314.0	45.0	87.0	24.0	22.4	6	
L300 2.0	205961	86 » 04	D	V	SM	277.0	45.0	87.0	22.0	20.4	6	
LANCER 1.6 / 2.0 Diesel	205670	92 » 96	D	V	SM	236.0	45.0	64.0	18.0	16.4	4+2	MR449769 - 699283
MONTERO	205668	99 »	D	V	SM	285.0	38.5	69.0	22.0	20.4	5	MR334996
MONTERO TRUCK 3.0 SOHC	203763	92 » 97	D	V	SM	276.0	45.0	87.0	24.0	22.4	6 + 4	
MONTERO V6	205961	88 » 91	D	V	SM	277.0	45.0	87.0	22.0	20.4	6	
PAJERO	205668	99 »	D	V	SM	285.0	38.5	69.0	22.0	20.4	5	MR334996
PASAJERO 2.4i / 2.5TD / 3.0i	203763	91 »	D	V	SM	276.0	45.0	87.0	24.0	22.4	6 + 4	
PICK-UP 1.6 / 2.0 / 2.5D	205666	87 »	D	V	SM	258.5	33.5	84.0	22.0	20.4	6	

NISSAN

FRONTIER 2.5 SEL / SE / LE	205994	2007 »	D	V	SM	296.0	53.0	68.0	28.0	26	6	40206JR70B
FRONTIER 2.8 4x2 / 4x4	203764	02 » 07	D	V	SM	276.5	39.0	100.0	26.0	24	6	
PATHFINDER	203764	87 » 95	D	V	SM	276.5	39.0	100.0	26.0	24	6	
SENTRA 1.6 / D / FAMILIAR	205671	91 »	D	V	SM	250.0	45.2	61.0	18.0	16	4+2	4020658Y01
SENTRA 1.8 16V / 2.0 16V	206088	07 »	D	V	SM	280.0	44.0	68.0	24.0	22	4	40206ET00A
SENTRA 2.0 16V	206055	05 » 13	T	S	SM	278.0	45.0	68.0	9.0	8	4	4320699J04
TERRANO / PICK - UP 2.7 TD 4WD	203764	89 » 96	D	V	SM	276.5	39.0	100.0	26.0	24	6	
TERRANO II / PICK-UP 2.4 i	203764	93 »	D	V	SM	276.5	39.0	100.0	26.0	24	6	





DISCOS PARA FRENOS BRAKE ROTORS



Dimensiones/Dimensions (mm)

Min. D	B	øC	D
--------	---	----	---

Cant. de Agujeros Hole Qty E

Referencia Equipo Original OEM Part#

D-Del./Front
S-Sol.
V-Vent.
T-Tras./Rear
CM - con Maza
SM - sin Maza

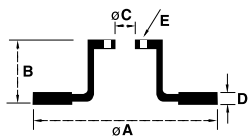
NISSAN (Continuación)

TERRANO II / PICK-UP 2.7 TDI 4WD	203764	96 »	D	V	SM	276.5	39.0	100.0	26.0	24	6	
TIIDA 1.8	205991	2008 »	D	V	SM	260.0	44.0	68.0	22.0	20	4	
TIIDA 1.8 16V	206088	2007 »	D	V	SM	280.0	44.0	68.0	24.0	22	4	40206ET00A
VERSA 1.8 16V	206088	07 » 13	D	V	SM	280.0	44.0	68.0	24.0	22	4	40206ET00A
X-TERRA 2.8 4x4	203764	02 »	D	V	SM	276.5	39.0	100.0	26.0	24	6	

PEUGEOT

106	203299	Todos	D	S	SM	247.0	34.5	66.0	10.0	9	4+2	424689
106	203301	Todos	D	V	SM	247.0	34.0	66.0	20.4	18.5	4+2	424694
205	203299	Todos	D	S	SM	247.0	34.5	66.0	10.0	9	4+2	424689
205	203301	Todos	D	V	SM	247.0	34.0	66.0	20.4	18.5	4+2	424694
205	204401	91 »	T	S	SM	247.0	20.3	71.0	8.0	7	4+2	4246.H0 - 424699
206	203301	99 » 00	D	V	SM	247.0	34.0	66.0	20.4	18.5	4+2	424694
305	202565	92 »	D	V	SM	266.0	27.7	66.0	20.4	18.5	4+2	9.563.204.880
306	203299	Todos	D	S	SM	247.0	34.5	66.0	10.0	9	4+2	424689
306	203301	Todos	D	V	SM	247.0	34.0	66.0	20.4	18.5	4+2	424694
306	204931	95 »	T	S	SM	247.0	25.3	71.0	8.0	6	4+2	95661749
309	203299	Todos	D	S	SM	247.0	34.5	66.0	10.0	9	4+2	424689
309	203301	Todos	D	V	SM	247.0	34.0	66.0	20.4	18.5	4+2	424694
309	204401	91 »	T	S	SM	247.0	20.3	71.0	8.0	7	4+2	4246.H0 - 424699
404	200312	67 »	D	S	SM	272.0	36.9	80.0	10.0	8.6	3	641.000.410
405	202565	92 »	D	V	SM	266.0	27.7	66.0	20.4	18.5	4+2	9.563.204.880
405	204566	92 »	T	S	SM	247.0	34.3	71.0	10.0	9	4+2	
406	205676	Todos	T	S	SM	290.0	60.0	71.0	10.0	8	4	4246T7 - 4246T6 - 4246L7
407	205873	04 »	T	S	SM	290.0	35.3	71.0	12.0	10	5	
504	200312	67 »	D	S	SM	272.0	36.9	80.0	10.0	8.6	3	641.000.410
807	205874	02 »	D	V	SM	285.0	43.5	59.0	28.0	26	5	
807	205875	02 »	T	S	SM	272.0	28.0	59.0	12.0	10	5	
106 1.6 16V / 106 II 1.6i	204931	96 »	T	S	SM	247.0	25.3	71.0	8.0	6	4+2	95661749
205 CABRIOLET	203300	Todos	D	V	SM	247.0	44.2	66.0	20.5	18.5	4+2	
206 1.4 / 1.6 16V / 2.0 HDI	205674	00 »	D	V	SM	266.0	34.4	66.0	22.0	20	4+2	4246W7 - 4249G1
206 1.6 16V / 2.0 16V GTI	204931	00 »	T	S	SM	247.0	25.3	71.0	8.0	6	4+2	95661749
206 CC 1.6i 16V / 2.0 16V	204931	02 »	T	S	SM	247.0	25.3	71.0	8.0	6	4+2	95661749
206 2.0 HDI / 206 SW 1.6i 16V	204931	00 »	T	S	SM	247.0	25.3	71.0	8.0	6	4+2	95661749
206 SW 1.6 16V / 2.0 HDI	205674	02 »	D	V	SM	266.0	34.4	66.0	22.0	20	4+2	4246W7 - 4249G1
207 Compact 1.4 8V / 1.4 HDI	205951	08 »	D	S	SM	247.0	34.0	66.0	13.0	11	4 + 2	4248R8
207 Compact 1.6 16V	204931	08 »	T	S	SM	247.0	25.3	71.0	8.0	6	4+2	95661749
207 Compact 1.6 16V	206042	08 »	T	S	CM	249.0	69.2	62.0	9.0	8	4	424919 - 424932 - 4246Z9
207 Compact 1.6 16V /												4246W7
207 SW 1.6 16V / 2.0 HDI	205674	08 »	D	V	SM	266.0	34.4	66.0	22.0	20	4+2	4249G1
208 1.5 8V / 1.6 16V	205674	13 »	D	V	SM	266.0	34.4	66.0	22.0	20	4+2	4246W7 - 4249G1
3008 1.6 THP	206015	11 » 13	D	V	SM	302.0	34.2	66.0	26.0	24	4+2	424964 - 424933 - 4246C0
306 (c/freno a disco trasero)	202565	92 »	D	V	SM	266.0	27.7	66.0	20.4	18.5	4+2	9.563.204.880
307 1.6i	205674	01 »	D	V	SM	266.0	34.4	66.0	22.0	20	4+2	4246W7 - 4249G1
307 2.0 16V	206015	03 » 12	D	V	SM	302.0	34.2	66.0	26.0	24	4+2	424964 - 424933 - 4246C0
307 2.0i 16V / 2.0 HDi	205675	01 »	D	V	SM	283.0	34.4	66.0	26.0	24	4+2	4246W2
307 SW / CC 2.0 16V	206042	06 »	T	S	CM	249.0	69.2	62.0	9.0	8	4	424919 - 424932 - 4246Z9
307 SW 1.6 16V / 2.0 HDI / 2.0 16V	205673	01 »	T	S	SM	247.0	35.3	71.0	9.0	8	4	4246W9 - 424990





DISCOS PARA FRENOS BRAKE ROTORS



Dimensiones/Dimensions (mm)

Min. D

Cant. de Agujeros Hole Qty E

Referencia Equipo Original OEM Part#

D-Del./Front
S-Sol.
V-Vent.
CM - con Maza
SM - sin Maza

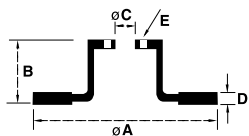
PEUGEOT (Continuación)

Modelo	Código	Asa	Dir.	Tip.	SM	ø A	B	ø C	D	Min. D	Cant. de Agujeros Hole Qty E	Referencia Equipo Original OEM Part#
307 SW 1.6 16V / 2.0 HDi / 2.0 16V	205675	01 »	D	V	SM	283.0	34.4	66.0	26.0	24	4+2	4246W2
307 Todos	206042	06 »	T	S	CM	249.0	69.2	62.0	9.0	8	4	424919/32 - 4246Z9
308 1.6 16V / 1.6 HDi / 2.0 16V	205675	12 »	D	V	SM	283.0	34.4	66.0	26.0	24	4+2	4249J6 - 424917
308 1.6 16V / 1.6 HDi / 2.0 16V	206061	12 »	T	S	CM	249.0	73.0	62.0	9.0	7	4	424966
406 1.9 TD	204049	96 »	D	V	SM	260.0	28.0	66.0	24.0	22	4+2	
406 2.0 HDi / 2.1 TD / 2.2 XS / 3.0 V6	204050	96 » 05	D	V	SM	283.0	28.2	66.0	26.0	24.2	4+2	
407 2.0 16V	205872	05 » 07	D	V	SM	283.0	48.0	71.0	26.0	24	5	4246V4 / 4246P7
407 SW 2.0 16V	205872	06 » 07	D	V	SM	283.0	48.0	71.0	26.0	24	5	4246V4 - 4246P7
408 1.6 HDi / 2.0 16V	205675	11 »	D	V	SM	283.0	34.4	66.0	26.0	24	4+2	4249J6 - 4246W8
408 1.6 HDi / 2.0 16V (S/SENSOR ABS)	206061	11 »	T	S	CM	249.0	73.0	62.0	9.0	7	4	424966
504 GRII	201776	83 »	D	S	SM	273.0	43.0	76.0	12.7	10.7	4	7.851.531.000
505 PICK UP	201776	82 »	D	S	SM	273.0	43.0	76.0	12.7	10.7	4	7.851.531.000
505 SRI	204932	86 » 92	T	S	SM	273.0	24.0	79.0	11.0	10	4	
BOXER	204048	94 »	D	S	SM	280.0	65.5	73.0	18.0	15.9	5+2	424658
BOXER	205626	94 »	D	V	SM	300.0	65.5	80.0	24.0	22	5+2	
BOXER (llanta 15")	206023	99 » 09	T	S	SM	280.0	82.0	72.0	16.0	14.2	5	46833806 4246Y9/7 71740118 46833807 - 4246Z3
BOXER (llanta 16")	206050	95 » 09	T	S	SM	280.0	82.0	79.0	16.0	14.2	5	4246Z1 134987180 424930 - 424931
BOXER 2.3 HDi (llanta 15")	206056	10 » 13	T	S	SM	280.0	80.0	72.0	16.0	14.2	5	51749274 51740245
BOXER 2.3 HDi (llanta 16")	206057	10 » 13	T	S	SM	280.0	80.0	79.0	16.0	14.2	5	4249K8 - 424940/39
BOXER 270 / 310 / 320	205506	94 »	D	V	SM	280.0	65.5	73.0	24.0	22	5	1300501080
EXPERT	205627	95 »	D	V	SM	257.0	40.5	59.0	20.0	18.2	5 + 1	
HOGGAR 1.4 8V	205951	10 »	D	S	SM	247.0	34.0	66.0	13.0	11	4 + 2	4248R8
HOGGAR 1.6 16V	205674	10 »	D	V	SM	266.0	34.4	66.0	22.0	20	4+2	4246W7 - 4249G1
J5	203562	» 94	D	S	SM	256.0	64.0	73.0	16.0	14.8	5+2+3	9350052100
PARTNER 1.4 / 1.6 16V	202565	94 » 04	D	V	SM	266.0	27.7	66.0	20.4	18.5	4+2	9.563.204.880
PARTNER 1.4 / 1.6 16V	205674	05 »	D	V	SM	266.0	34.4	66.0	22.0	20	4+2	4246W7 - 4249G1
PARTNER 1.6 HDi	205674	10 »	D	V	SM	266.0	34.4	66.0	22.0	20	4+2	4246W7 - 4249G1
PARTNER 1.9D	205672	96 »	D	S	SM	266.0	27.2	66.0	13.0	11	4 + 2	

RENAULT

Modelo	Código	Asa	Dir.	Tip.	SM	ø A	B	ø C	D	Min. D	Cant. de Agujeros Hole Qty E	Referencia Equipo Original OEM Part#
ALIZE	202499	90 »	D	V	SM	265.0	32.0	61.0	20.0	17.7	4+2	7700764193
CLIO	203412	Todos	D	S	SM	238.0	41.3	61.0	8.0	7	4+2	7700716947
CLIO 1.4	202237	91 » 98	D	S	SM	238.0	41.3	61.0	12.0	10.5	4+2	7700704705
CLIO II 1.2 16V / 1.4 16V / 1.9 D (+ABS)	203053	98 »	D	V	SM	238.0	41.0	61.0	20.0	17.4	4+2	7700756572
CLIO II 1.6 16V (-ABS)	203053	98 »	D	V	SM	238.0	41.0	61.0	20.0	17.4	4+2	7700756572
CLIO II 1.2 16V / 1.4 16V / 1.9 D (-ABS)	202237	98 »	D	S	SM	238.0	41.3	61.0	12.0	10.5	4+2	7700704705
CLIO II 1.6 16V / 1.9 dTi (+ABS)	204051	98 »	D	V	SM	259.0	41.3	61.0	20.6	19	4+2	7700434957 / 7700813549
CLIO II 2.0 16V (+ABS)	204831	99 »	D	V	SM	280.0	44.0	61.0	24.0	21.8	4+2	8200044498
CLIO Mio	205952	12 »	D	S	SM	259.0	41.0	61.0	12.0	10.8	4	6001547683 - 7701208252
CLIO WILLIAMS	204051	93 »	D	V	SM	259.0	41.3	61.0	20.6	19	4+2	7700434957 / 7700813549
COUPE 2.2	203296	Todos	D	V	SM	259.0	46.0	61.0	20.0	18	4+2	7700715081
DUSTER 1.6 16V	206027	11 »	D	V	SM	269.0	44.0	68.0	22.5	19.8	5	402066300R 8200517156
DUSTER 2.0 16V	206003	11 »	D	V	SM	280.0	44.0	68.0	24.0	21.8	5+2	402064151R 402060010R





DISCOS PARA FRENOS BRAKE ROTORS



Dimensiones/Dimensions (mm)

Min. D

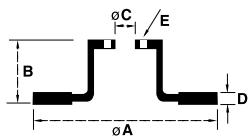
Cant. de
Agujeros
Hole Qty

E

Referencia
Equipo
Original
OEM Part#

D-Del./Front
T-Tras./Rear
S-Sol.
CM - con Maza
V-Vent.
SM - sin Maza

RENAULT (Continuación)															
Modelo	Código	Cant. de Discos	Del.	Tras.	Sol.	CM	Vent.	SM	Ø A	B	Ø C	D	Min. D	Cant. de Agujeros	Referencia Original
EXPRESS	202237	85 »	D	S	SM				238.0	41.3	61.0	12.0	10.5	4+2	7700704705
EXPRESS	203412	Todos	D	S	SM				238.0	41.3	61.0	8.0	7	4+2	7700716947
FLUENCE 1.6 16V / 2.0 16V	206003	10 »	D	V	SM				280.0	44.0	68.0	24.0	21.8	5+2	8200517156 402064151R 402060010R
FLUENCE 1.6 16V / 2.0 16V	206080	10 »	T	S	CM				260.0	86.0	55.0	8.0	7	5	432001539R 8200517156
FLUENCE GT 2.0 16V	206003	13 »	D	V	SM				280.0	44.0	68.0	24.0	21.8	5+2	402064151R 402060010R
FLUENCE GT 2.0 16V	206080	13 »	T	S	CM				260.0	86.0	55.0	8.0	7	5	432001539R
FUEGO	201811	86	D	V	SM				238.0	46.0	60.0	20.0	17.4	4+2	7700649109
FUEGO	202384	86 »	D	V	SM				238.0	46.0	61.0	20.0	17.4	4+2	7700754287
FUEGO GTA	204933	Todos	T	S	SM				254.0	55.0	66.3	12.0	10.5	4	
KANGOO	203053	97 » 01	D	V	SM				238.0	41.0	61.0	20.0	17.4	4+2	7700756572
KANGOO (Todos)	204051	01 »	D	V	SM				259.0	41.3	61.0	20.6	19	4+2	7700434957 / 7700813549
KANGOO (C/ABS)	204051	98 » 01	D	V	SM				259.0	41.3	61.0	20.6	19	4+2	7700434957 / 7700813549
LAGUNA	204052	92 »	D	V	SM				262.0	44.0	61.0	22.0	19.8	4+2	7700802232
LAGUNA	205887	94 »	D	V	SM				280.0	44.0	61.0	24.0	21.8	4	
LAGUNA 2.0	204555	96 »	T	S	SM				265.0	44.3	66.0	10.5	9.5	4+2	
LAGUNA 2.0 16V	204602	94 »	D	V	SM				280.0	44.0	61.0	24.0	21.8	5+2	
LAGUNA 2.0 16V	204603	96 »	T	S	SM				265.0	44.3	66.0	10.5	9.5	5+2	
LAGUNA 3.0 24V V6 / LAGUNA II	205679	02 »	T	S	CM				274.0	82.0	62.0	11.0	8.5	5	7701472838
LAGUNA II	205678	02 »	D	V	SM				300.0	47.0	61.0	26.0	22.8	5+2	7701206614 - 8200007122
LAGUNA II 1.8 16V / 1.9 Dci	205677	00 »	D	V	SM				280.0	47.0	61.0	24.0	21.8	5+2	7701206613
LAGUNA II 2.0 16V	204831	00 »	D	V	SM				280.0	44.0	61.0	24.0	21.8	4+2	8200044498
LOGAN 1.6i 16V	204051	07 »	D	V	SM				259.0	41.3	61.0	20.6	19	4+2	7700434957 / 7700813549
LOGAN 1.5 Cdi	205952	07 »	D	S	SM				259.0	41.0	61.0	12.0	10.8	4	6001547683 7701208252
LOGAN 1.6 8V	206067	14 »	D	V	SM				258.0	43.9	61.0	22.0	19.8	4 + 2	402063149R / 402062212R
LOGAN II 1.6 8V / 1.6 16V	205910	98 » 00	D	V	SM				280.0	61.5	79.5	24.0	22	6	
MASTER Diesel y Turbodiesel	205912	98 » 00	T	S	SM				305.5	67.0	90.0	12.0	10.5	5+1	7700314107
MASTER II Box 2.5D	205971	00 » 13	D	V	SM				305.5	77.5	90.0	28.0	25	5+1	7700314064
MASTER 2.8 DTI	205912	01 » 13	T	S	SM				305.5	67.0	90.0	12.0	10.5	5+1	7700314107
MASTER 2.8 DTI Furgón / Minibus	205971	04 » 13	D	V	SM				305.5	77.5	90.0	28.0	25	5+1	7700314064
MASTER 2.5 DTI Chasis / Furgón	205912	09 » 13	T	S	SM				305.5	67.0	90.0	12.0	10.5	5+1	7700314107
MASTER 2.5 DTI Chasis / Furgón	205912	09 » 13	T	S	SM				305.5	67.0	90.0	12.0	10.5	5+1	7700314107
MEGANE	204555	96 »	T	S	SM				265.0	44.3	66.0	10.5	9.5	4+2	
MEGANE 1.6 RN / RT	203053	Todos	D	V	SM				238.0	41.0	61.0	20.0	17.4	4+2	7700756572
MEGANE 2.0 16V	204051	95 » 99	D	V	SM				259.0	41.3	61.0	20.6	19	4+2	7700434957 / 7700813549
MEGANE 2.0 16V	205887	99 »	D	V	SM				280.0	44.0	61.0	24.0	21.8	4	
MEGANE 2.0 16V (+ABS)	204831	02 »	D	V	SM				280.0	44.0	61.0	24.0	21.8	4+2	8200044498
MEGANE II 2.0 16V	205887	05 »	D	V	SM				280.0	44.0	61.0	24.0	21.8	4	
MEGANE II 2.0 16V	205888	05 »	T	S	CM				240.0	80.6	55.0	8.0	7	4	7701207823
MEGANE II COUPE 1.6 16V / 2.0 16V / 1.9 dCi	206080	08 »	T	S	CM				260.0	86.0	55.0	8.0	7	5	432001539R
MEGANE III 1.4 Tce / 2.0 CVT	206080	09 »	T	S	CM				260.0	86.0	55.0	8.0	7	5	432001539R
MEGANE III 1.6 16V / 1.5 dCi / 1.9 dCi	206080	08 »	T	S	CM				260.0	86.0	55.0	8.0	7	5	432001539R
MEGANE III 2.0 16V	206003	10 »	D	V	SM				280.0	44.0	68.0	24.0	21.8	5+2	8200517156 402064151R/0010R
MEGANE TD	205887	99 »	D	V	SM				280.0	44.0	61.0	24.0	21.8	4	



DISCOS PARA FRENOS BRAKE ROTORS



Dimensiones/Dimensions (mm)

Min. D	B	øC	D
--------	---	----	---

Cant. de Agujeros Hole Qty E

Referencia Equipo Original OEM Part#

RENAULT (Continuación)

Modelo	Código	Diámetro	Del./Front	Tras./Rear	Material	ø A	B	ø C	D	Min. D	Cant. de Agujeros Hole Qty E	Referencia Equipo Original OEM Part#
NEVADA	202499	90 »	D	V	SM	265.0	32.0	61.0	20.0	17.7	4+2	7700764193
R11	202237	84 » 92	D	S	SM	238.0	41.3	61.0	12.0	10.5	4+2	7700704705
R11 TURBO	203053	Todos	D	V	SM	238.0	41.0	61.0	20.0	17.4	4+2	7700756572
R12 CHICO	201503	71»75	D	S	SM	228.5	38.4	83.0	10.0	9	6	7702027999
R12 GRANDE	201200	75 »	D	S	SM	238.5	38.4	83.0	10.0	9	6	7702024559
R18 GTA	203296	Todos	D	V	SM	259.0	46.0	61.0	20.0	18	4+2	7700715081
R18 Ø 60	201811	86	D	V	SM	238.0	46.0	60.0	20.0	17.4	4+2	7700649109
R18 Ø 61	202384	86 »	D	V	SM	238.0	46.0	61.0	20.0	17.4	4+2	7700754287
R19 RN	202237	95 »	D	S	SM	238.0	41.3	61.0	12.0	10.5	4+2	7700704705
R19 RT	203053	Todos	D	V	SM	238.0	41.0	61.0	20.0	17.4	4+2	7700756572
R19 RT	204051	93 »	D	V	SM	259.0	41.3	61.0	20.6	19	4+2	7700434957 / 7700813549
R21	202499	90 »	D	V	SM	265.0	32.0	61.0	20.0	17.7	4+2	7700764193
R21	204554	92 »	T	S	SM	255.0	30.5	66.0	10.5	9.5	4	
R9	202237	85 » 94	D	S	SM	238.0	41.3	61.0	12.0	10.5	4+2	7700704705
RAMBLER	200589	66 »	D	S	SM	285.0	57.6	95.0	12.7	11	5	2058168
SAFRANE	204602	94 »	D	V	SM	280.0	44.0	61.0	24.0	21.8	5+2	
SAFRANE	205887	94 »	D	V	SM	280.0	44.0	61.0	24.0	21.8	4	
SANDERO 1.6i 16V	204051	07 »	D	V	SM	259.0	41.3	61.0	20.6	19	4+2	7700434957 / 7700813549
SANDERO 1.5 Cdi	204051	09 »	D	V	SM	259.0	41.3	61.0	20.6	19	4+2	7700434957 / 7700813549
SANDERO 1.6 8V	205952	08 »	D	S	SM	259.0	41.0	61.0	12.0	10.8	4	6001547683 - 7701208252
SANDERO II 1.6 8V / 1.6 16V	206067	15 »	D	V	SM	258.0	43.9	61.0	22.0	19.8	4 + 2	402063149R / 402062212R
SANDERO STEPWAY	204051	09 »	D	V	SM	259.0	41.3	61.0	20.6	19	4+2	7700434957 / 7700813549
SCENIC 1.6 8V	204051	96 » 98	D	V	SM	259.0	41.3	61.0	20.6	19	4+2	7700434957 / 7700813549
SCENIC 1.6 16V / 1.9 dCi / 2.0 16V	205887	98 »	D	V	SM	280.0	44.0	61.0	24.0	21.8	4	
SCENIC RT	204831	98 »	D	V	SM	280.0	44.0	61.0	24.0	21.8	4+2	8200044498
STEPWAY NM 1.6 16V	206067	15 »	D	V	SM	258.0	43.9	61.0	22.0	19.8	4 + 2	402063149R / 402062212R
SYMBOL 1.5 Cdi	204051	09 »	D	V	SM	259.0	41.3	61.0	20.6	19	4+2	7700434957 / 7700813549
SYMBOL 1.6 16V												
SYMBOL 1.6 8V	203053	09 »	D	V	SM	238.0	41.0	61.0	20.0	17.4	4+2	7700756572
TORINO	200589	66 »	D	S	SM	285.0	57.6	95.0	12.7	11	5	2058168
TRAFIC	202359	87 »	D	V	SM	252.0	53.4	76.0	24.0	22	6	7700561367
TWINGO	203412	Todos	D	S	SM	238.0	41.3	61.0	8.0	7	4+2	7700716947

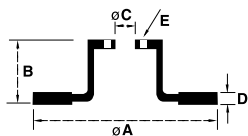
ROVER

200 SERIES	203225	89 »	D	V	SM	262.0	45.0	64.2	21.0	19	4+2+2	G8D 90 840
400 SERIES												

SEAT

ALTEA 2.0 FSI	206086	06 »	T	S	SM	272.0	48.3	65.0	10.0	9	5 + 4 + 1	1K0615601AA
CORDOBA	201519	Todos	D	S	SM	239.0	35.0	65.0	12.0	10.5	4+1	175615301
CORDOBA	204044	91 »	D	V	SM	256.0	39.0	65.0	20.0	18	4+1	
CORDOBA 1.9 TDI	204558	02 »	D	V	SM	256.0	36.6	65.0	22.0	19	5+1	1J0615301L/D - 5Z0615301B
FURA	201185	67 »	D	S	SM	227.0	45.0	68.0	10.0	9	4+2	
IBIZA	201185	Todos	D	S	SM	227.0	45.0	68.0	10.0	9	4+2	4139101
IBIZA	204044	91 »	D	V	SM	256.0	39.0	65.0	20.0	18	4+1	
IBIZA 1.8 i / 1.9 D	201519	Todos	D	S	SM	239.0	35.0	65.0	12.0	10.5	4+1	175615301
IBIZA IV 1.4 16V / 1.9 TDI	205614	02 »	T	S	SM	232.0	39.3	65.0	9.0	7	5+1	
INCA	204043	93 »	D	S	SM	256.0	39.5	65.0	13.0	11	4+1	
INCA	204044	91 »	D	V	SM	256.0	39.0	65.0	20.0	18	4+1	





DISCOS PARA FRENOS BRAKE ROTORS



Dimensiones/Dimensions (mm)

Min. D

Cant. de
Agujeros
Hole Qty

E

Referencia
Equipo
Original
OEM Part#

D-Del./Front
T-Tras./Rear
S-Sol.
CM - con Maza
V-Vent.
SM - sin Maza

SEAT (Continuación)

LEON 1.4i 16V / 2.016V TDI	206010	05 »	T	S	SM	286.0	48.5	65.0	12.0	10	5 + 4 + 1	1K0615601M
LEON 1.8 20V	204559	00 »	D	V	SM	280.0	36.6	65.0	22.0	19	5+1	
LEON 1.8 20V / 1.9 TDI	205614	99 »	T	S	SM	232.0	39.3	65.0	9.0	7	5+1	
LEON 2.0 16V TDI	206001	05 »	D	V	SM	288.0	50.0	65.0	25.0	22	5 + 4 + 1	1K0615301T / 1K0615301K
LEON 2.0 FSI	205867	05 »	D	V	SM	312.0	50.0	65.0	25.0	22	5 + 4 + 1	1K0615301AA
LEON 2.0 FSI / TFSI	206086	09 »	T	S	SM	272.0	48.3	65.0	10.0	9	5 + 4 + 1	1K0615601AA
MALAGA	201185	Todos	D	S	SM	227.0	45.0	68.0	10.0	9	4+2	4139101
MARBELLA	201185	Todos	D	S	SM	227.0	45.0	68.0	10.0	9	4+2	4139101
PANDA	201185	67 »	D	S	SM	227.0	45.0	68.0	10.0	9	4+2	
RITMO	201185	67 »	D	S	SM	227.0	45.0	68.0	10.0	9	4+2	
RONDA	201185	67 »	D	S	SM	227.0	45.0	68.0	10.0	9	4+2	
TERRA	201185	Todos	D	S	SM	227.0	45.0	68.0	10.0	9	4+2	4139101
TOLEDO	201519	Todos	D	S	SM	239.0	35.0	65.0	12.0	10.5	4+1	175615301
TOLEDO	204044	91 »	D	V	SM	256.0	39.0	65.0	20.0	18	4+1	
TOLEDO	205866	04 »	T	S	SM	255.0	51.5	65.0	9.5	7	5	1K0615601K
TOLEDO III 1.6i / 1.9 TDI	205865	04 »	D	V	SM	280.0	49.6	65.0	22.0	19	5 + 4 + 1	1K0615301S
TOLEDO 2.0i 16V	204562	91 »	D	V	SM	280.0	46.2	68.0	22.0	20	5	
TOLEDO II 1.6 16V	204558	00 » 06	D	V	SM	256.0	36.6	65.0	22.0	19	5+1	1J0615301L/D - 5Z0615301B
TOLEDO II 1.6 16V / 1.8i 20V	205614	99 » 06	T	S	SM	232.0	39.3	65.0	9.0	7	5+1	
TOLEDO II 1.8i 20V	204559	99 »	D	V	SM	280.0	36.6	65.0	22.0	19	5+1	

SUBARU

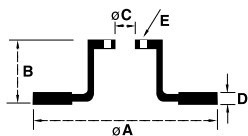
1300	201982	72 » 79	D	S	SM	228.6	46.0	70.0	10.4	9	4	6238-20031
1300	201983	80 »	D	S	SM	228.6	51.6	70.0	12.3	10	4	7254-31000
1400	201982	72 » 79	D	S	SM	228.6	46.0	70.0	10.4	9	4	6238-20031
1400	201983	80 »	D	S	SM	228.6	51.6	70.0	12.3	10	4	7254-31000

SUZUKI

ALTO	203765	95 »	D	V	SM	231.0	50.0	64.0	17.0	15	4+2+2	
BALENO 1.3 / 1.6 16V	205686	Todos	D	V	SM	235.0	49.5	60.0	20.0	18	4+3	5531161G00
MARUTI	203765	95 »	D	V	SM	231.0	50.0	64.0	17.0	15	4+2+2	
SWIFT 1.1 / 1.3	203765	90 »	D	V	SM	231.0	50.0	64.0	17.0	15	4+2+2	

TOYOTA

4x4 PICK UP	204614	86 » 04	D	V	SM	289.0	64.3	100.0	20.0	18	6	43512-35270
CARINA	201967	79 » 82	D	S	SM	228.6	17.5	64.0	10.0	9	4	43512-20030/32
CELICA	201967	79 » 82	D	S	SM	228.6	17.5	64.0	10.0	9	4	43512-20030/32
COROLLA (Todos)	205688	89 » 92	D	V	SM	258.0	48.0	54.0	22.0	21	4+2	
COROLLA 1.3i 16V	205687	92 » 97	D	V	SM	255.0	48.2	55.0	22.0	20	4+2	
COROLLA 1.4 16V / 1.6 16V / 1.8 16V	205953	02 » 07	T	S	SM	258.0	55.5	55.0	9.0	8	4 + 2	4243102070
COROLLA 1.4 16V / 1.6 16V / 1.8 16V	205853	03 » 08	D	V	SM	255.0	49.5	55.0	25.0	23	4	4351247020-4351213030
COROLLA 1.6i 16V	205687	93 » 98	D	V	SM	255.0	48.2	55.0	22.0	20	4+2	
COROLLA 1.8 16V / 2.0	206002	03 »	T	S	SM	279.0	56.0	55.0	9.0	8	4 + 2	
COROLLA 1.8i 16V	205687	99 » 02	D	V	SM	255.0	48.2	55.0	22.0	20	4+2	
COROLLA 1.8 16V	206025	08 »	D	V	SM	273.0	49.5	55.0	26.0	24	5	4351202290
COROLLA 1.8 16V	206026	08 »	T	S	SM	270.0	37.0	55.0	10.0	8	5	4243102270
COROLLA 2.0 16V	206025	10 »	D	V	SM	273.0	49.5	55.0	26.0	24	5	4351202290
COROLLA 2.0 16V	206026	10 »	T	S	SM	270.0	37.0	55.0	10.0	8	5	4243102270
ETIOS 1.3 / 1.5	206081	13 »	D	V	SM	257.0	45.3	55.0	22.0	19	4	435120D160 - 435120D170
FIELDER 1.8 16V	205853	04 » 08	D	V	SM	255.0	49.5	55.0	25.0	23	4	4351247020-4351213030



DISCOS PARA FRENOS BRAKE ROTORS



D-Del./Front
T-Tras./Rear
S-Sol. CM - con Maza
V-Vent. SM - sin Maza

Dimensiones/Dimensions (mm)

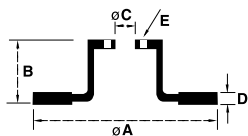
ø A	B	ø C	D	Min. D	Cant. de Agujeros Hole Qty E	Referencia Equipo Original OEM Part#
-----	---	-----	---	-----------	---------------------------------------	---

TOYOTA (Continuación)

FIELDER 1.8 16V	205953	04 » 08	T	S	SM	258.0	55.5	55.0	9.0	8	4 + 2	4243102090-4243102070
HILUX 3.0 4x4 / 4x2 Turbodiesel	205915	05 »	D	V	SM	297.0	67.5	108.0	25.0	23	6 + 2	435120K080
HILUX 4x2 - 1.8 / 2.2 / 2.4	204667	86 » 04	D	V	SM	257.0	46.5	84.0	25.0	23	5	
HILUX 4x2 / 4x4	204614	86 » 04	D	V	SM	289.0	64.3	100.0	20.0	18	6	43512-35270
HILUX SW4 (llanta 15")	205962	98 » 05	D	V	SM	296.7	70.5	108.0	22.0	20	6	4351204020 - 4351235280
HILUX SW4 2.5 / 3.0 Turbo	205955	05 »	D	V	SM	319.0	67.5	108.0	28.0	26	6 + 2	435120K110
HILUX SW4 4x4 3.0 Turbo (llanta 16")	205954	99 » 02	D	V	SM	319.0	70.0	108.0	22.0	20	6	4351260120 / 4351235210
LAND CRUISER	205689	96 »	D	V	SM	302.0	48.0	100.0	20.0	19	6+2	4351260040
MINIBUS	204934	95 »	D	V	SM	295.0	102.0	125.0	35.0	32	5	

VOLKSWAGEN

1500 (BENDIX)	201315	82 »	D	S	SM	244.5	24.0	66.7	12.6	10.7	4	9-71301803-N
1500 (TENZA)	201098	82 »	D	S	SM	248.0	24.0	66.7	10.0	9	4	9-71302431-N
AMAROK 2.0 16V TD	206007	10 »	D	V	SM	303.0	56.9	76.0	28.0	26	5 + 1	2H0.615.301.A
AMAZON	201519	83 »	D	S	SM	239.0	35.0	65.0	12.0	10.5	4+1	ZBA-615.301
BEETLE 1.2 / 1.4 / 1.6 / 2.0 TSI	206086	12 »	T	S	SM	272.0	48.3	65.0	10.0	9	5 + 4 + 1	1K0615601AA
BORA 1.6 16V	205690	00 » 05	D	V	SM	288.0	34.2	65.0	25.0	22	5+1	
BORA 1.6i / 1.9 SDI	204558	00 »	D	V	SM	256.0	36.6	65.0	22.0	19	5+1	1J0615301L/D - 5Z0615301B
BORA 1.8 T	205614	03 »	T	S	SM	232.0	39.3	65.0	9.0	7	5+1	
BORA 1.8 T	205690	03 »	D	V	SM	288.0	34.2	65.0	25.0	22	5+1	
BORA 1.9 TDI	204559	00 » 05	D	V	SM	280.0	36.6	65.0	22.0	19	5+1	
BORA 2.0	205614	00 »	T	S	SM	232.0	39.3	65.0	9.0	7	5+1	
BORA 2.0	204559	98 »	D	V	SM	280.0	36.6	65.0	22.0	19	5+1	
BORA TD	205614	00 »	T	S	SM	232.0	39.3	65.0	9.0	7	5+1	
CADDY	204044	95 »	D	V	SM	256.0	39.0	65.0	20.0	18	4+1	
CADDY 1.4 16V	206053	04 »	T	S	SM	260.0	48.3	65.0	12.0	10	5 + 4 + 1	1K0615601L
CADDY III Box 1.4 16V / 1.9 / 2.0 TDI	206053	04 »	T	S	SM	260.0	48.3	65.0	12.0	10	5 + 4 + 1	1K0615601L
CADDY III 1.2 / 1.6 / 2.0	206086	10 »	T	S	SM	272.0	48.3	65.0	10.0	9	5 + 4 + 1	1K0615601AA
CARAT	201519	83 »	D	S	SM	239.0	35.0	65.0	12.0	10.5	4+1	ZBA-615.301
CROSSFOX 1.6	204558	05 »	D	V	SM	256.0	36.6	65.0	22.0	19	5+1	1J0615301L/D - 5Z0615301B
CROSSFOX 1.6 (llanta 14")	206009	05 »	D	V	SM	239.0	35.0	65.0	18.0	16	5	6Q0615301 6Q0615301A 6QE615301A
FOX 1.6	204558	04 »	D	V	SM	256.0	36.6	65.0	22.0	19	5+1	1J0615301L/D - 5Z0615301B
FOX 1.6 (llanta 14")	206009	03 »	D	V	SM	239.0	35.0	65.0	18.0	16	5	6Q0615301 6Q0615301A 6QE615301A
GACEL	201519	83 »	D	S	SM	239.0	35.0	65.0	12.0	10.5	4+1	ZBA-615.301
GOL	201519	83 »	D	S	SM	239.0	35.0	65.0	12.0	10.5	4+1	ZBA-615.301
GOL (MEX)	201519	83 »	D	S	SM	239.0	35.0	65.0	12.0	10.5	4+1	ZBA-615.301
GOL GTI	202568	92 » 94	D	V	SM	239.0	38.7	65.0	20.0	18	4+1	3256152891
GOL GTI	204044	95 »	D	V	SM	256.0	39.0	65.0	20.0	18	4+1	
GOL NM	202568	00 »	D	V	SM	239.0	38.7	65.0	20.0	18	4+1	3256152891
GOLF 1.6	205614	99 » 01	T	S	SM	232.0	39.3	65.0	9.0	7	5+1	
GOLF 1.6 16V	205614	00 » 05	T	S	SM	232.0	39.3	65.0	9.0	7	5+1	
GOLF 1.8 20V / 1.8 20V TURBO	205614	99 »	T	S	SM	232.0	39.3	65.0	9.0	7	5+1	
GOLF 1.6 / 1.6 FSI / 1.9 TDI (llanta 15")	205866	03 »	T	S	SM	255.0	51.5	65.0	9.5	7	5	1K0615601K
GOLF 1.6i	204558	99 » 01	D	V	SM	256.0	36.6	65.0	22.0	19	5+1	1J0615301L/D - 5Z0615301B
GOLF 1.8 20V	204559	99 »	D	V	SM	280.0	36.6	65.0	22.0	19	5+1	



DISCOS PARA FRENOS BRAKE ROTORS



D-Del./Front
T-Tras./Rear
S-Sol. CM - con Maza
V-Vent. SM - sin Maza

Dimensiones/Dimensions (mm)

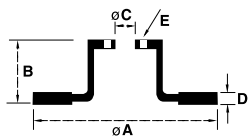
Min. D

Cant. de A agujeros Hole Qty E

Referencia Equipo Original OEM Part#

VOLKSWAGEN (Continuación)

Modelo	Código	Año	Del./Tras.	Sol./Vent.	Maza	A	B	C	D	Min. D	Cant. de A agujeros Hole Qty E	Referencia Equipo Original OEM Part#
GOLF 1.8i 20V Turbo	205690	99 »	D	V	SM	288.0	34.2	65.0	25.0	22	5+1	
GOLF 1.9 TDI (llanta 15")	205866	03 »	T	S	SM	255.0	51.5	65.0	9.5	7	5	1K0615601K
GOLF 2.0 16V FSI / 2.0 16V FSI Turbo	205867	05 »	D	V	SM	312.0	50.0	65.0	25.0	22	5 + 4 + 1	1K0615301AA
GOLF 2.0 16V FSI / TFSI / 2.0 16V TDI	206010	05 »	T	S	SM	286.0	48.5	65.0	12.0	10	5 + 4 + 1	1K0615601M
GOLF 2.0 20V	204558	02 »	D	V	SM	256.0	36.6	65.0	22.0	19	5+1	1J0615301L/D - 5Z0615301B
GOLF 2.0 20V	204559	99 »	D	V	SM	280.0	36.6	65.0	22.0	19	5+1	
GOLF 2.0 8V	204559	00 »	D	V	SM	280.0	36.6	65.0	22.0	19	5+1	
GOLF 2.0 8V	205614	02 »	T	S	SM	232.0	39.3	65.0	9.0	7	5+1	
GOLF 2.0 Turbo	206010	06 » 07	T	S	SM	286.0	48.5	65.0	12.0	10	5 + 4 + 1	1K0615601M
GOLF GLX / GTI	204043	93 »	D	S	SM	256.0	39.5	65.0	13.0	11	4+1	357.615.301
GOLF GTI 2.0i 16V / GOLF 2.8 VR6	205693	92 » 97	D	V	SM	288.0	28.2	65.0	25.0	23	5+1	3A06115301A
GOLF II	204562	96 »	D	V	SM	280.0	46.2	68.0	22.0	20	5	
GOLF IV 1.6 16V	205690	00 » 05	D	V	SM	288.0	34.2	65.0	25.0	22	5+1	
GOLF IV 1.9 TDI	205690	00 » 05	D	V	SM	288.0	34.2	65.0	25.0	22	5+1	
GOLF V 1.6 16V / 2.0 16V FSI (llanta 16")	206001	04 »	D	V	SM	288.0	50.0	65.0	25.0	22	5 + 4 + 1	1K0615301T / K
GOLF V 1.4 TSI / 1.4 FSI / 1.6 16V FSI	206053	03 »	T	S	SM	260.0	48.3	65.0	12.0	10	5 + 4 + 1	1K0615601L
GOLF V 1.6 16V / FSI / 1.9 TDI (llanta 15")	205865	03 »	D	V	SM	280.0	49.6	65.0	22.0	19	5 + 4 + 1	1K0615301S
GOLF V 2.0 TDI	206001	04 »	D	V	SM	288.0	50.0	65.0	25.0	22	5 + 4 + 1	1K0615301T / K
GOLF V 2.0 TDI	206053	03 »	T	S	SM	260.0	48.3	65.0	12.0	10	5 + 4 + 1	1K0615601L
GOLF VI 1.4 TSI	206086	09 »	T	S	SM	272.0	48.3	65.0	10.0	9	5 + 4 + 1	1K0615601AA
GOLF VI 1.4 TSI / 1.6 16V / 2.0 TDI	206053	08 »	T	S	SM	260.0	48.3	65.0	12.0	10	5 + 4 + 1	1K0615601L
GOLF VII 1.2 TSI / 1.4 TSI / 2.0 TSI	206086	13 »	T	S	SM	272.0	48.3	65.0	10.0	9	5 + 4 + 1	1K0615601AA
KOMBI	201496	Todos	D	S	SM	278.0	86.0	66.0	13.0	11	5+2	201.315.301-B
NEW BEETLE 1.9 TDI	204559	98 » 01	D	V	SM	280.0	36.6	65.0	22.0	19	5+1	
NEW BEETLE 1.9 TDI	205690	05 »	D	V	SM	288.0	34.2	65.0	25.0	22	5+1	
NEW BEETLE 2.0	204559	98 »	D	V	SM	280.0	36.6	65.0	22.0	19	5+1	
NEW BEETLE 2.0	205614	98 »	T	S	SM	232.0	39.3	65.0	9.0	7	5+1	
PARATI	201519	83 »	D	S	SM	239.0	35.0	65.0	12.0	10.5	4+1	ZBA-615.301
PASSAT TODOS	204564	96 »	T	S	SM	245.0	64.0	68.0	10.0	8	5	
PASSAT (BRA)	201519	83 »	D	S	SM	239.0	35.0	65.0	12.0	10.5	4+1	ZBA-615.301
PASSAT 1.8 20V Turbo / 2.8 V6 30V	204398	96 »	D	V	SM	288.0	46.5	68.0	25.0	23	5	
PASSAT 1.9	204043	93 »	D	S	SM	256.0	39.5	65.0	13.0	11	4+1	357.615.301
PASSAT 1.8 20V / 2.8 VR6	204562	96 »	D	V	SM	280.0	46.2	68.0	22.0	20	5	
PASSAT 2.0	204044	95 »	D	V	SM	256.0	39.0	65.0	20.0	18	4+1	
PASSAT 2.0 16V	205693	93 » 96	D	V	SM	288.0	28.2	65.0	25.0	23	5+1	3A06115301A
PASSAT 2.0 16V FSI	205867	06 »	D	V	SM	312.0	50.0	65.0	25.0	22	5 + 4 + 1	1K0615301AA
PASSAT 2.0 16V FSI / TFSI / TDI	206010	06 »	T	S	SM	286.0	48.5	65.0	12.0	10	5 + 4 + 1	1K0615601M
PASSAT 2.0 / 2.8 / VR6	205692	92 »	T	S	CM	226.0	71.2	39.8 / 50.2	10.0	8	5	357615601A
PASSAT CC 1.8 TSI / 2.0 TFSI	205867	08 »	D	V	SM	312.0	50.0	65.0	25.0	22	5 + 4 + 1	1K0615301AA
PASSAT CC 1.8 TSI / 2.0 TFSI	206010	08 »	T	S	SM	286.0	48.5	65.0	12.0	10	5 + 4 + 1	1K0615601M
PASSAT CC 3.6 4motion / 2.0 TDI	205867	08 »	D	V	SM	312.0	50.0	65.0	25.0	22	5 + 4 + 1	1K0615301AA
PASSAT CC 3.6 4motion / 2.0 TDI	206010	08 »	T	S	SM	286.0	48.5	65.0	12.0	10	5 + 4 + 1	1K0615601M
POINTER	206318	94 »	D	V	SM	239.5	42.8	63.5	20.0	18	4	
POLO	201519	96 » 97	D	S	SM	239.0	35.0	65.0	12.0	10.5	4+1	ZBA-615.301
POLO	202568	92 » 01	D	V	SM	239.0	38.7	65.0	20.0	18	4+1	3256152891
POLO (GRANDE)	204044	95 »	D	V	SM	256.0	39.0	65.0	20.0	18	4+1	
POLO DERBY	204044	01 »	D	V	SM	256.0	39.0	65.0	20.0	18	4+1	



DISCOS PARA FRENOS BRAKE ROTORS



Dimensiones/Dimensions (mm)

Min. D

Cant. de
Agujeros
Hole Qty
E

Referencia
Equipo
Original
OEM Part#

D-Del./Front
T-Tras./Rear
S-Sol. CM - con Maza
V-Vent. SM - sin Maza

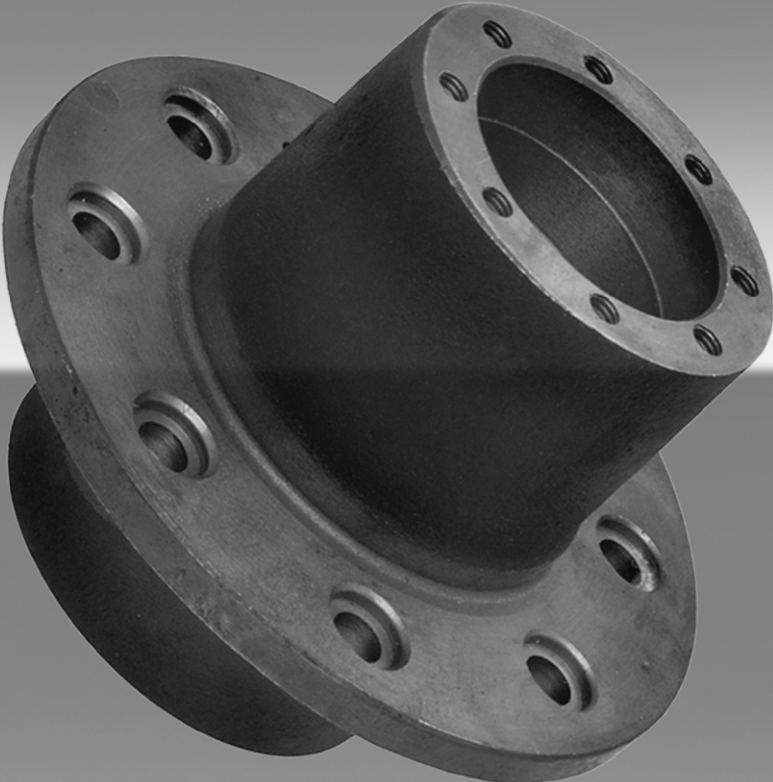
VOLKSWAGEN (Continuación)

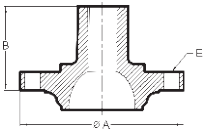
Modelo	Código	Año	Del.	Tras.	Material	ø A	B	ø C	D	Min. D	Cant. de Agujeros Hole Qty E	Referencia Equipo Original OEM Part#
QUANTUM	202568	92 » 94	D	V	SM	239.0	38.7	65.0	20.0	18	4+1	3256152891
QUANTUM	204044	95 »	D	V	SM	256.0	39.0	65.0	20.0	18	4+1	
ROUTAN 3.8 / 4.0	206014	09 »	D	V	SM	302.0	38.0	72.5	28.0	26.4	5	
SANTANA	202568	92 » 94	D	V	SM	239.0	38.7	65.0	20.0	18	4+1	3256152891
SANTANA	204044	95 »	D	V	SM	256.0	39.0	65.0	20.0	18	4+1	
SAVEIRO	201519	83 »	D	S	SM	239.0	35.0	65.0	12.0	10.5	4+1	ZBA-615.301
SAVEIRO (G6)	206085	14 »	D	V	SM	256.0	36.6	65.0	22.0	19	4+1	1S0615301
SCIROCCO 1.4 TSI / 2.0 TSI / 2.0 TDI	205866	08 »	T	S	SM	255.0	51.5	65.0	9.5	7	5	1K0615601K
SCIROCCO 1.4 TSI / 2.0 TSI / 2.0 TDI	205867	08 »	D	V	SM	312.0	50.0	65.0	25.0	22	5 + 4 + 1	1K0615301AA
SCIROCCO 1.4 TSI / 2.0 TSI / 2.0 TDI	206086	10 »	T	S	SM	272.0	48.3	65.0	10.0	9	5 + 4 + 1	1K0615601AA
SENDA	201519	83 »	D	S	SM	239.0	35.0	65.0	12.0	10.5	4+1	ZBA-615.301
SHARAN 1.4 TSI	206001	11 »	D	V	SM	288.0	50.0	65.0	25.0	22	5 + 4 + 1	1K0615301T / K
SURAN 1.6	204558	06 »	D	V	SM	256.0	36.6	65.0	22.0	19	5+1	1J0615301L/D - 5Z0615301B
SURAN 1.6 (llanta 14")	206009	06 »	D	V	SM	239.0	35.0	65.0	18.0	16	5	6Q0615301 / A
SURAN 1.9 SDI	204558	08 »	D	V	SM	256.0	36.6	65.0	22.0	19	5+1	1J0615301L/D - 5Z0615301B
TIGUAN 1.4 TSI / 2.0 TFSI / 2.0 TDI	205867	07 »	D	V	SM	312.0	50.0	65.0	25.0	22	5 + 4 + 1	1K0615301AA
TIGUAN 1.4 TSI / 2.0 TFSI / 2.0 TDI	206010	07 »	T	S	SM	286.0	48.5	65.0	12.0	10	5 + 4 + 1	1K0615601M
TRANSPORTER	205959	96 »	D	V	SM	280.0	55.0	68.0	24.0	22	5	
TREND (GOL 5ª GENERACIÓN 14")	205939	08 »	D	V	SM	256.0	35.0	65.0	18.0	16	4+1	5U0615301C
UP 1.0	206085	14 »	D	V	SM	256.0	36.6	65.0	22.0	19	4+1	1S0615301
VENTO 1.9 Diesel	206001	07 »	D	V	SM	288.0	50.0	65.0	25.0	22	5 + 4 + 1	1K0615301T / K
VENTO 2.0 16V FSI	205867	07 »	D	V	SM	312.0	50.0	65.0	25.0	22	5 + 4 + 1	1K0615301AA
VENTO 2.0 16V TDI	206010	07 »	T	S	SM	286.0	48.5	65.0	12.0	10	5 + 4 + 1	1K0615601M
VENTO 2.0 16V TFSI	206010	06 »	T	S	SM	286.0	48.5	65.0	12.0	10	5 + 4 + 1	1K0615601M
VENTO 2.0 TURBO	205867	07 »	D	V	SM	312.0	50.0	65.0	25.0	22	5 + 4 + 1	1K0615301AA
VENTO 2.5 20V	206001	07 »	D	V	SM	288.0	50.0	65.0	25.0	22	5 + 4 + 1	1K0615301T / K
VENTO 2.5 20V	206053	07 »	T	S	SM	260.0	48.3	65.0	12.0	10	5 + 4 + 1	1K0615601L
VENTO 2.0 TFSI	206091	14 »	T	S	SM	253.0	51.3	65.0	10.0	8	5 + 4 + 1	5C0615601
VOYAGE (GOL 5ª GENERACIÓN 14")	205939	08 »	D	V	SM	256.0	35.0	65.0	18.0	16	4+1	5U0615301C

VOLVO

C30 2.0 / C30 T5 / C70 CABRIOLET	206060	07 »	D	V	SM	278.0	48.5	63.5	25.0	23	5	31262718 - 274509
S40	205695	96 » 97	D	V	SM	256.0	45.0	69.0	24.0	22	4	
S40	205696	96 »	T	S	SM	260.0	41.0	90.0	10.0	8.4	4	
S40	205697	97 »	D	V	SM	281.0	45.5	69.0	24.0	21.4	4	308180272
S40 2.4	206060	05 »	D	V	SM	278.0	48.5	63.5	25.0	23	5	31262718 - 274509
S40 2.5	206012	04 » 10	T	S	SM	265.0	40.8	63.6	11.0	9	5	
V40	205695	96 » 97	D	V	SM	256.0	45.0	69.0	24.0	22	4	
V40	205696	96 »	T	S	SM	260.0	41.0	90.0	10.0	8.4	4	
V40	205697	97 »	D	V	SM	281.0	45.5	69.0	24.0	21.5	4	308180272
V50 2.4	206060	04 »	D	V	SM	278.0	48.5	63.5	25.0	23	5	31262718 - 274509
V50 T5	206060	05 »	D	V	SM	278.0	48.5	63.5	25.0	23	5	31262718 - 274509

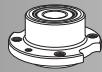
**MAZAS DE RUEDA
WHEEL HUBS**





MAZAS DE RUEDA WHEEL HUBS

Raybestos
The best in brakes



D-Del./Front
T-Tras./Rear

Dimensiones/Dimensions
(mm)

ø A
(Exterior)

B
(Altura total)

Cant. de
Agujeros
Hole Qty
E

Referencia
Equipo
Original
OEM Part#

CHRYSLER / DODGE

D-200	203305	67 » 80	D	153.0	113.5	5.0	3.658.312-N
D-400	200107	63 »	T	273.0	189.0	6.0	2.498.078-N
D-400	200101	63 »	D	268.0	168.0	6+6	2.489.080-N
D-500	200107	63 »	T	273.0	189.0	6.0	2.498.078-N
D-500	200101	63 »	D	268.0	168.0	6+6	2.489.080-N
DP-400	200107	63 »	T	273.0	189.0	6.0	2.498.078-N
DP-400	200101	63 »	D	268.0	168.0	6+6	2.489.080-N
DP-500	200107	63 »	T	273.0	189.0	6.0	2.498.078-N
DP-500	200101	63 »	D	268.0	168.0	6+6	2.489.080-N
DP-600 (ROSCA P/GRUESO)	202466	63 »	T	323.0	180.0	8.0	2.619.710-N
DP-800 ARTILLERA	201320	Todos	T	488.0	190.0	5+5+12	

EL DETALLE

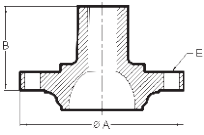
OA 101	204413	Todos	T	370.0	200.0	10.0	
--------	--------	-------	---	-------	-------	------	--

FIAT

147	204021	80 »	D	115.5	78.5	4+2	
DUCATO 1.9 (28 Estrías)	205921	92 »	D	139.0	100.5	5+2	
DUCATO MAXI 2.5	205922	96 »	D	155.5	100.0	5+2	
DUNA	204021	80 »	D	115.5	78.5	4+2	
DUNA	204020	80 »	T	117.0	64.0	4+2	
FIORINO (c/Rodamientos)	204020	80 »	T	117.0	64.0	4+2	
REGATTA	204021	80 »	D	115.5	78.5	4+2	
SIENA / PALIO	205923	96 » 02	D	117.0	77.0	4+2	
UNO	204021	80 »	D	115.5	78.5	4+2	
UNO	204020	80 »	T	117.0	64.0	4+2	

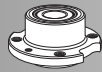
FORD

F-100	201175	73 »	D	179.0	104.0	5.0	BA-D3TZ-1104-D
F-1000 (F-100)	202449	84 » 93	D	164.1	105.0	5.0	T-71407611-RA
F-350	202134	88 »	T	235.0	175.0	8+8	87TR 1116-A
F-350	201254	76 »	T	235.0	165.0	6+8+1	75TR 1116-A
F-400	202134	88 »	T	235.0	175.0	8+8	87TR 1116-A
F-600	200107	Todos	T	273.0	189.0	6.0	COTT-1109-A
F-600	200101	57 »	D	268.0	168.0	6+6	B7T 1104-A
F-700 ARTILLERA	201015	73 »	T	492.0	175.0	5+5+12	BA-D2TZ-1109-A
ESCORT	203304	Todos	D	130.0	80.0	4+1	
ESCORT (Ø Rod. 39 mm)	205925	97 »	D	131.0	76.0	4.0	91AB-1104-AD/AE
FALCON	200749	Todos	D	152.4	90.5	5.0	72DR-1106-A
FARLAINE	200749	Todos	D	152.4	90.5	5.0	72DR-1106-A
FIESTA (Ø Rod. 39 mm)	205925	96 »	D	131.0	76.0	4.0	91AB-1104-AD/AE
FOCUS (Ø Rod. 39 mm)	205925	99 »	D	131.0	76.0	4.0	91AB-1104-AD/AE
KA (Ø Rod. 39 mm)	205925	97 »	D	131.0	76.0	4.0	91AB-1104-AD/AE
MONDEO (27 Estrías)	205924	88 »	D	130.0	76.0	4.0	
ORION (Ø Rod. 39 mm)	205925	95 » 97	D	131.0	76.0	4.0	91AB-1104-AD/AE
SIERRA	201997	87 »	D	146.1	110.0	4.0	86BR-1K036-A
SIERRA	201998	87 »	D	146.1	110.0	4.0	86BR-1106-A
SIERRA	203306	84 »	T	144.0	48.5	4+4	



MAZAS DE RUEDA WHEEL HUBS

Raybestos
The best in brakes



D-Del./Front
T-Tras./Rear

Dimensiones/Dimensions
(mm)

ø A
(Exterior)

B
(Altura total)

Cant. de
Agujeros
Hole Qty
E

Referencia
Equipo
Original
OEM Part#

GENERAL MOTORS

C 20	204033	90 » 93	D	180.0	119.0	6+6	
C 20	204034	93 »	D	180.0	112.5	6+6	
C60 - 350-D-60H (ROSCA PASO FINO)	200231	64 »	T	323.0	180.0	8.0	5.751.719
CD-500	200107	68 »	T	273.0	189.0	6.0	2.786.435
CD-500	200101	68 »	D	268.0	168.0	6+6	2.786.443
CORSA	204035	91 »	D	118.0	76.0	4+2+1	
CORSA II	205985	02 »	D	122.0	78.0	4.0	90576767.0
D20	204033	90 » 93	D	180.0	119.0	6+6	
D20	204034	93 »	D	180.0	112.5	6+6	
MERIVA	205985	02 »	D	122.0	78.0	4.0	90576767.0
MONTANA (PICK-UP)	205985	11 »	D	122.0	78.0	4.0	90576767.0
MONTANA 1.7 Diesel	205985	03 »	D	122.0	78.0	4.0	90576767.0
PICK UP CHEVROLET	200187	62 »	D	172.0	108.0	6+3	3.883.310

MERCEDES BENZ

180	204948	Todos	D	188.0	122.5	5.0	
1114	204413	Todos	T	370.0	200.0	10.0	
1315	204414	Todos	D	380.0	225.0	10.0	
1316	204414	Todos	D	380.0	225.0	10.0	
1318	204414	Todos	D	380.0	225.0	10.0	
1320	204414	Todos	D	380.0	225.0	10.0	
1517	204415	Todos	T	370.0	200.0	10.0	
1521	204415	Todos	T	370.0	200.0	10.0	
1114 - FRENARSA	204416	Todos	T	315.0	200.0	8+16+1	
O170	204413	Todos	T	370.0	200.0	10.0	
OH	204415	Todos	T	370.0	200.0	10.0	

PEUGEOT

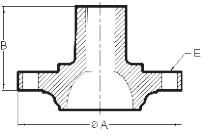
405	205927	91 »	D	130.0	67.5	4+2	
504 Diesel	204036	82 »	D	165.0	90.0	4+4	
505 Diesel	204036	82 »	D	165.0	90.0	4+4	

RENAULT

CLIO	205929	Todos	D	121.0	75.0	4+2	
CLIO 2 (23d)	205936	Todos	D	121.0	76.0	4+2	
EXPRESS	205929	Todos	D	121.0	75.0	4+2	
EXPRESS (c/Rodamientos)	205930	Todos	T	133.0	73.4	4 + 2	7700 308 572
KANGOO (c/Rodamientos)	205930	Todos	T	133.0	73.4	4 + 2	7700 308 572
MASTER	205978	01 »	D	154.0	105.0	5+1	
MEGANE TD	205936	Todos	D	121.0	76.0	4+2	
R 9	205928	Todos	D	121.0	75.0	4+2	
R 11	205928	Todos	D	121.0	75.0	4+2	
R 19	205929	Todos	D	121.0	75.0	4+2	
R-21 (c/Rodamientos)	205930	Todos	T	133.0	73.4	4 + 2	7700 308 572
SCENIC (c/Rodamientos)	205930	Todos	T	133.0	73.4	4 + 2	7700 308 572

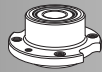
VOLKSWAGEN

CADDY (c/Rodamientos) (4AG)	205932	Todos	T	117.0	63.0	4+1	
FOX (c/Rodamientos) SIN ABS (5AG)	205933	Todos	T	119.0	64.5	5+1	
GOL	203237	Todos	D	122.0	76.5	4+1	823407615.0



MAZAS DE RUEDA WHEEL HUBS

Raybestos
The best in brakes



D-Del./Front
T-Tras./Rear

Dimensiones/Dimensions
(mm)
ø A
(Exterior) B
(Altura total)

Cant. de
Agujeros
Hole Qty
E

Referencia
Equipo
Original
OEM Part#

VOLKSWAGEN (Continuación)

GOLF	205931	98 »	D	120.0	74.0	4+1	357407615.0
GOLF / NEW BEETLE (c/Rodamientos)(5AG)	205934	Todos	T	119.0	64.0	5+1	
KOMBI	201494	81 »	T	160.0	74.2	5+2	211.500.621
POINTER (Ø Rod. 39 mm)	205925	95 » 97	D	131.0	76.0	4.0	91AB-1104-AD/AE
POLO / DERBY	205931	03 »	D	120.0	74.0	4+1	357407615.0
SAVEIRO	203237	Todos	D	122.0	76.5	4+1	823407615.0

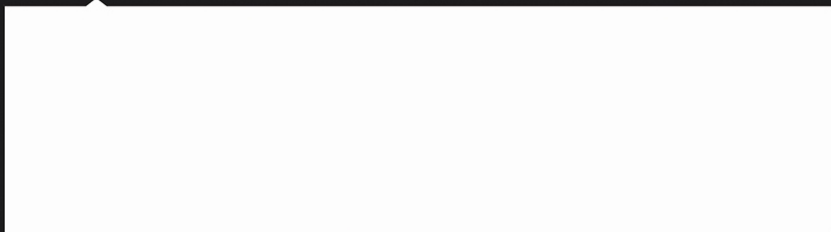
Raybestos[®]
The *best* in brakes[®]

plabesto[®]
FRENOS



*Confiabilidad, Rendimiento
y Calidad.*

Entregado por:



Asistencia Técnica y Garantía

☎ 0 800 444 3262